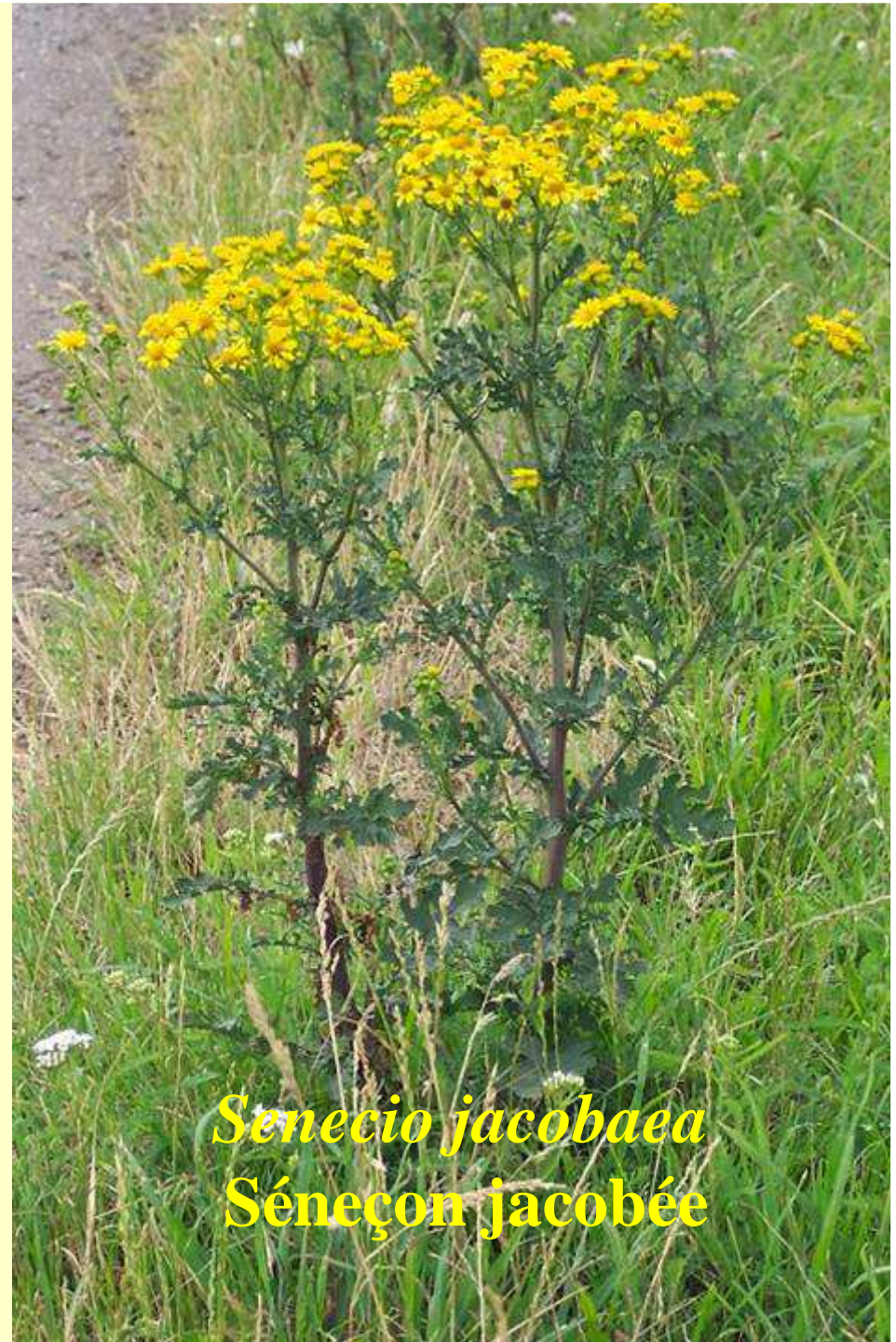
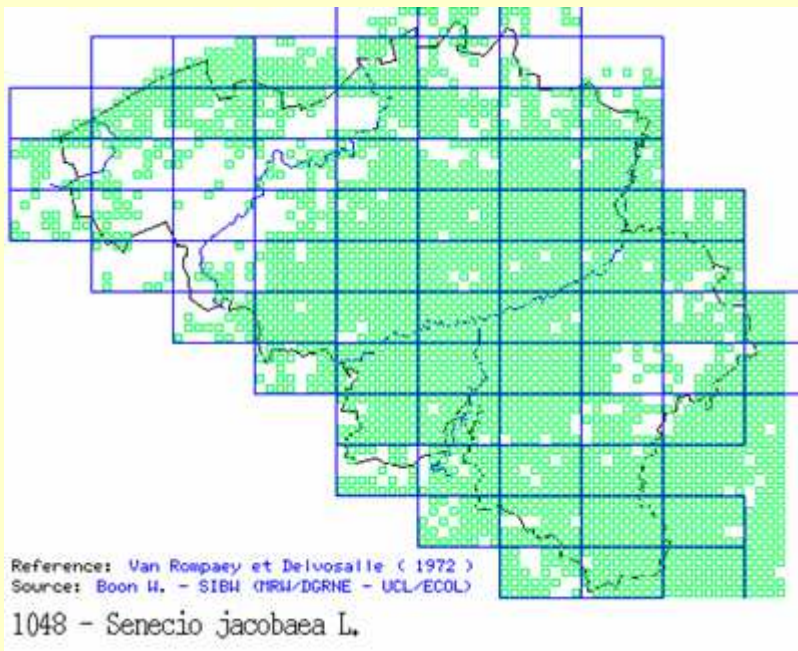


17 relevés botaniques réalisés sur les bords de routes  
100 espèces végétales observées



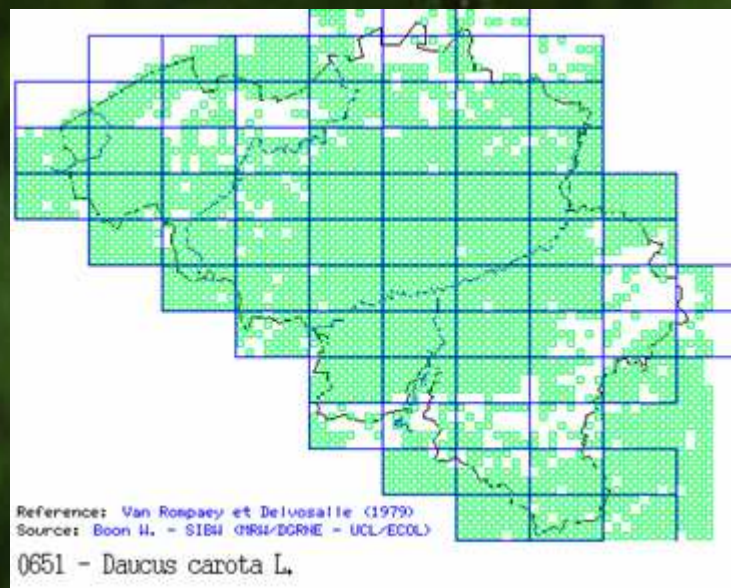
**Ottignies-Louvain-la-Neuve**

## Carte de répartition des observations





Carte de répartition  
de la plante en Belgique



*Daucus carota*  
Carotte



# Ottignies-Louvain-la-Neuve





Taxon

*Holcus lanatus*

*Lotus corniculatus*

*Trifolium pratense*

*Equisetum arvense*

*Festuca rubra*

*Cerastium fontanum*

*Daucus carota*

*Campanula rapunculus*

*Plantago lanceolata*

*Trifolium repens*

*Poa pratensis*

*Agrostis capillaris*

*Senecio jacobaea*

*Ranunculus repens*

*Trifolium dubium*

*Vicia hirsuta*

*Dactylis glomerata*

*Hieracium sabaudum*

*Hypericum perforatum*

*Vicia tetrasperma*

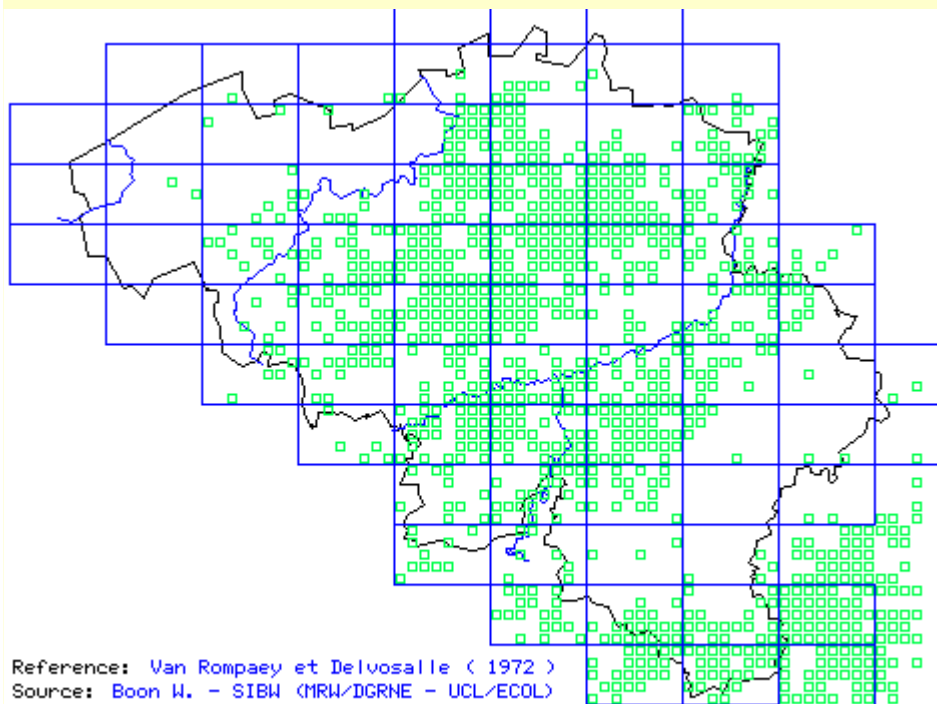
*Cirsium arvense*



Ottignies-Louvain-la-Neuve



## Carte de répartition des observations



Reference: Van Rompaey et Delvosalle ( 1972 )

Source: Boon W. - SIBW (MRW/IGRNE - UCL/ECOL)

0967 - *Campanula rapunculus* L.



*Campanula rapunculus*  
Campanule raiponce



***Hypericum perforatum*- Millepertuis commun**

# Ottignies-Louvain-la-Neuve

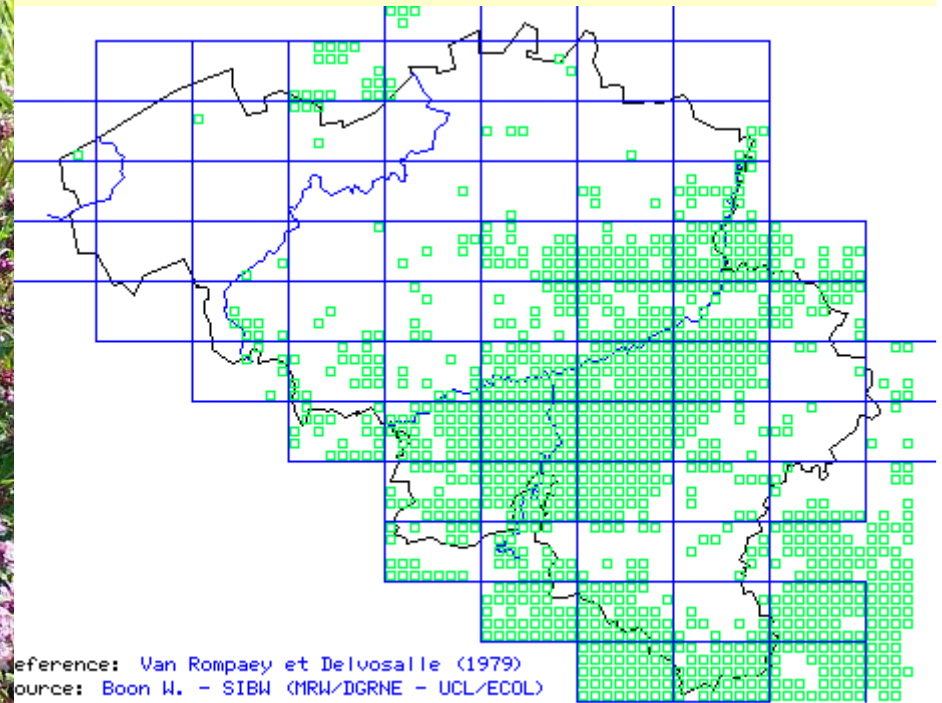




- | Taxon                        |
|------------------------------|
| <i>Equisetum arvense</i>     |
| <i>Trifolium campestre</i>   |
| <i>Festuca rubra</i>         |
| <i>Origanum vulgare</i>      |
| <i>Vicia hirsuta</i>         |
| <i>Arrhenatherum elatius</i> |
| <i>Vicia tetrasperma</i>     |
| <i>Daucus carota</i>         |
| <i>Hypericum perforatum</i>  |
| <i>Agrostis capillaris</i>   |
| <i>Plantago lanceolata</i>   |
| <i>Crepis capillaris</i>     |
| <i>Rubus</i> sp.             |
| <i>Vicia sativa</i>          |
| <i>Trifolium dubium</i>      |
| <i>Trifolium pratense</i>    |
| <i>Hypochaeris radicata</i>  |
| <i>Senecio jacobaea</i>      |
| <i>Artemisia vulgaris</i>    |
| <i>Dactylis glomerata</i>    |
| <i>Lotus corniculatus</i>    |
| <i>Malva sylvestris</i>      |



## Carte de répartition de la plante en Belgique

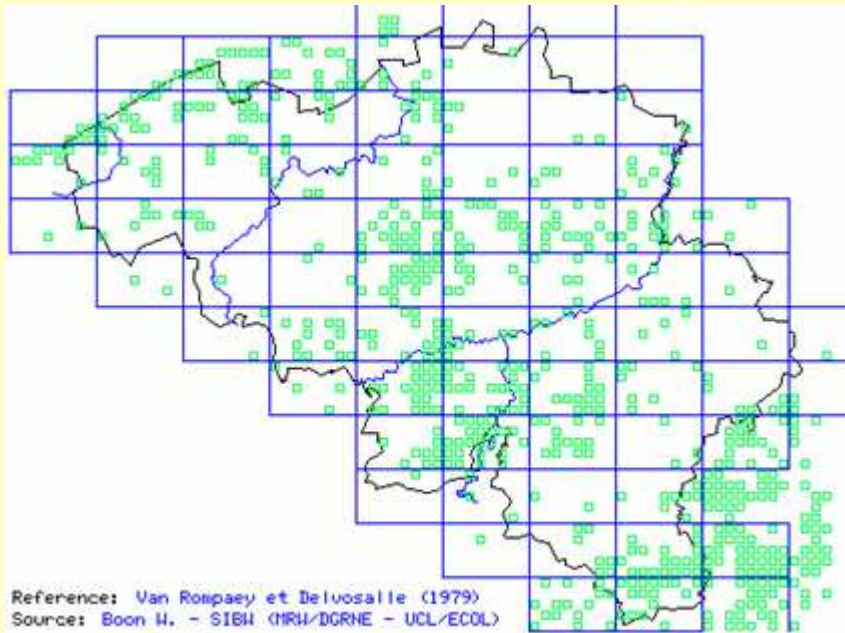


Reference: Van Rompaey et Delvosalle (1979)  
Source: Boon W. - SIBW (MRW/IGRNE - UCL/ECOL)

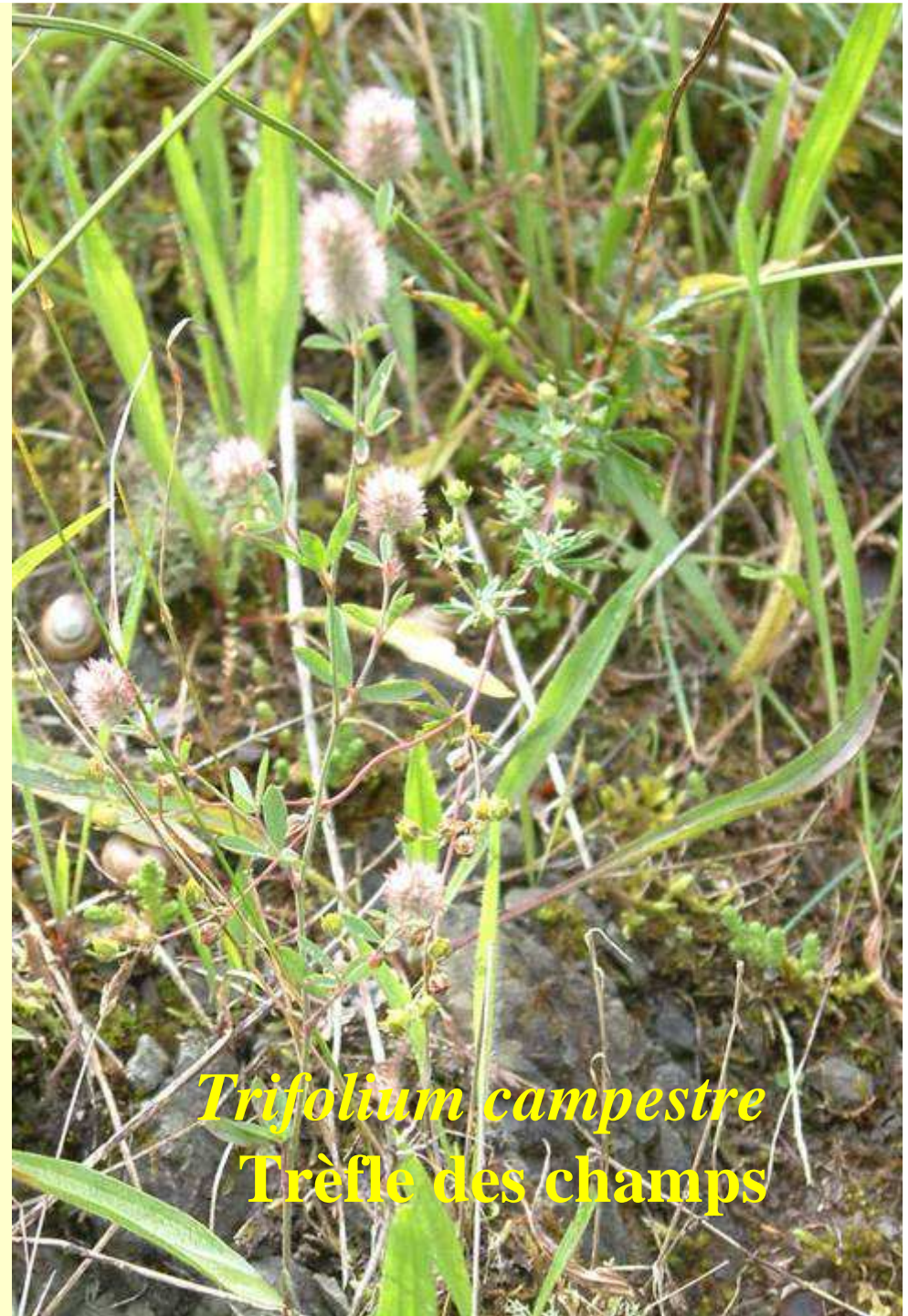
1775 - Origanum vulgare L.

*Origanum vulgare*  
Origan

## Carte de répartition des observations

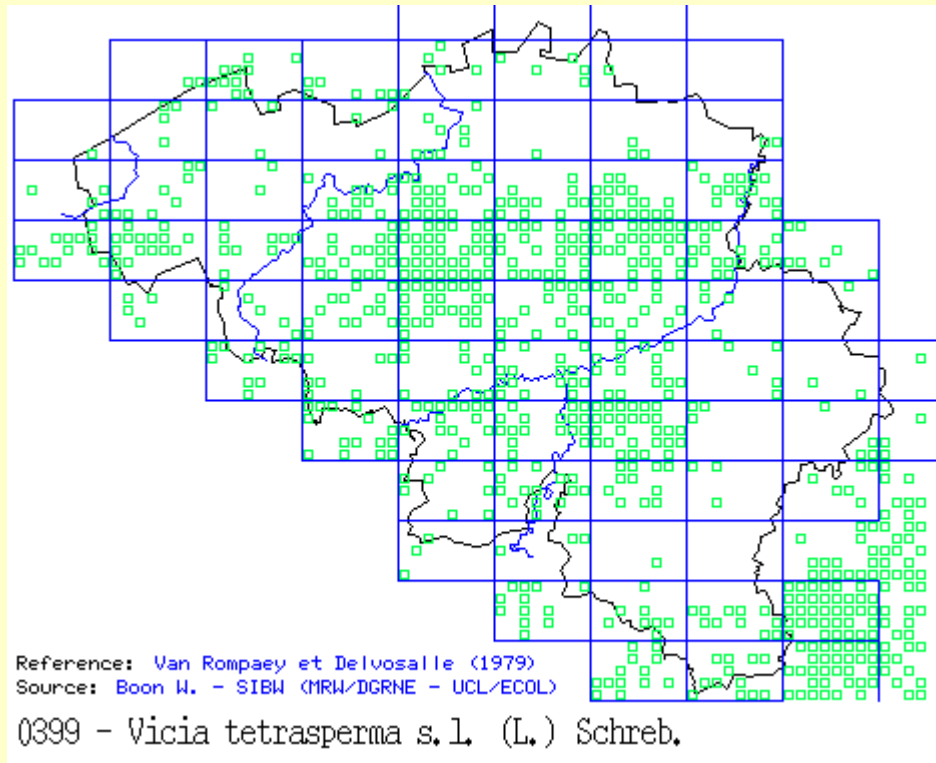


0370 - *Trifolium campestre* Schreb.



*Trifolium campestre*  
Trèfle des champs

## Carte de répartition de la plante en Belgique

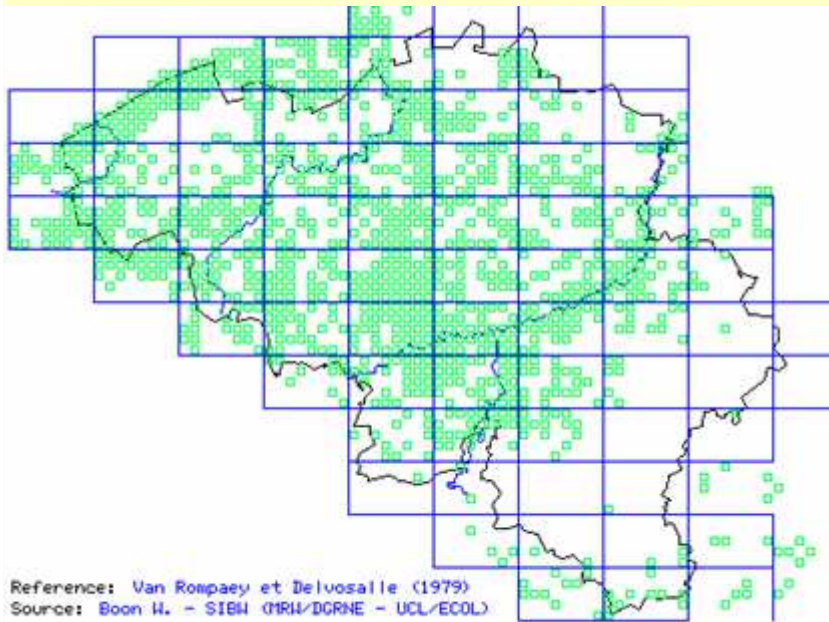




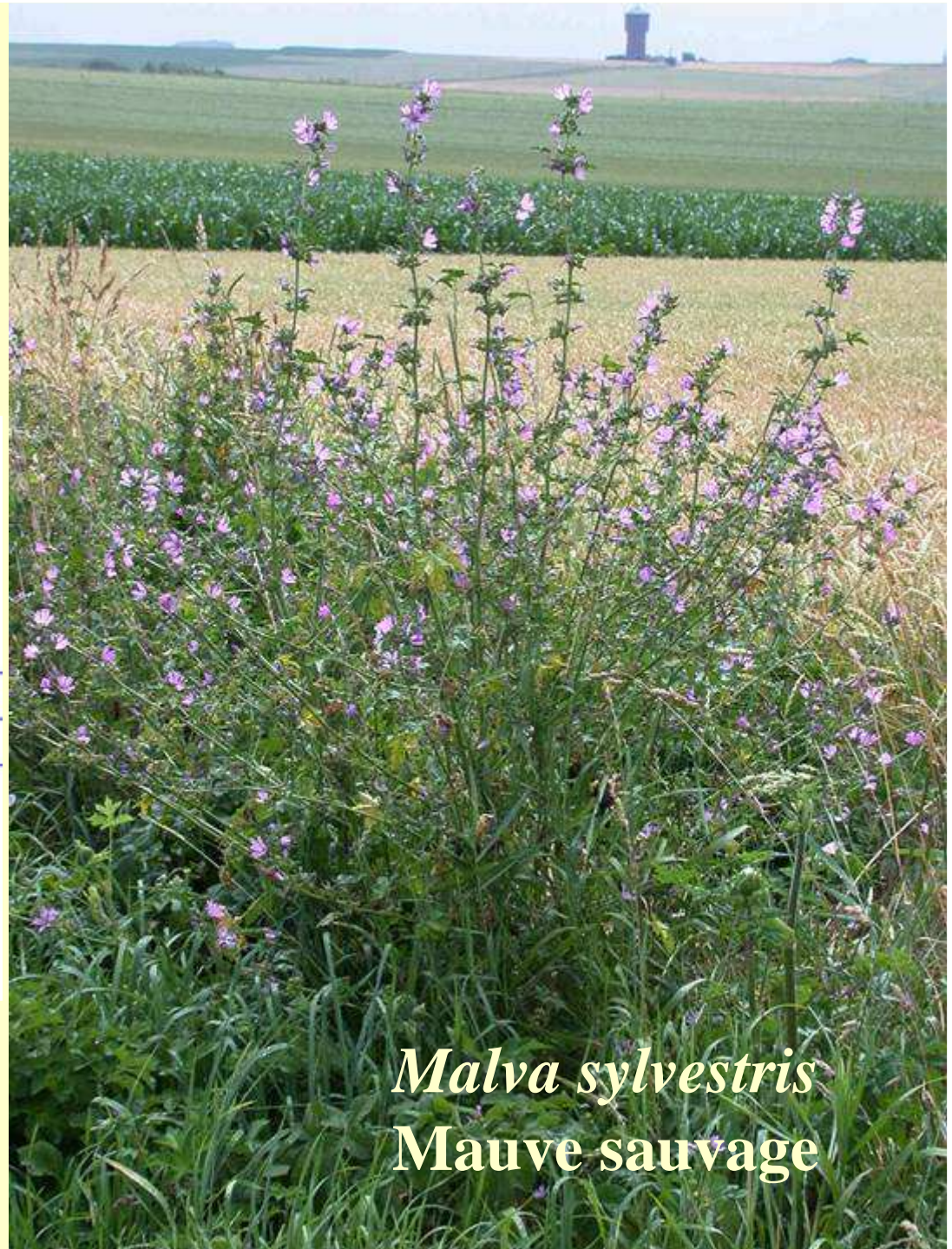
*Trifolium pratense*  
Trèfle des prés



# Carte de répartition de la plante en Belgique



0541 - *Malva sylvestris* L.



*Malva sylvestris*  
Mauve sauvage

# Ottignies-Louvain-la-Neuve



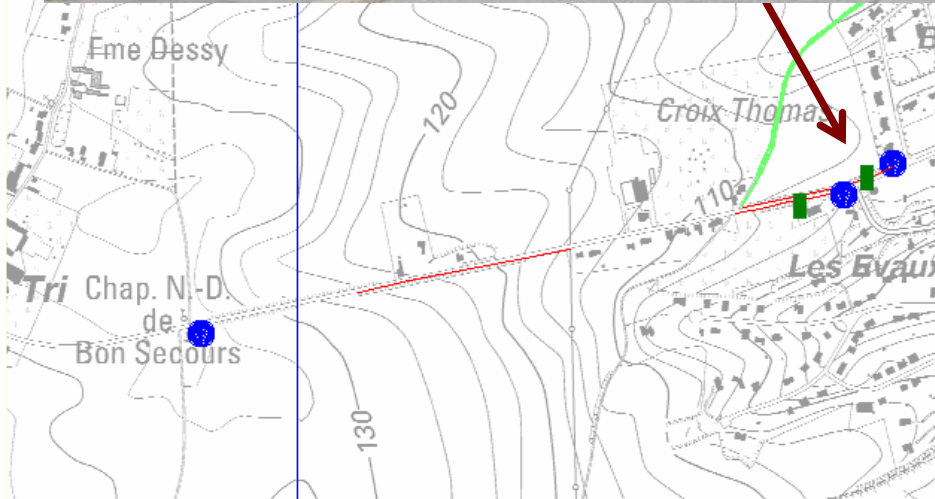
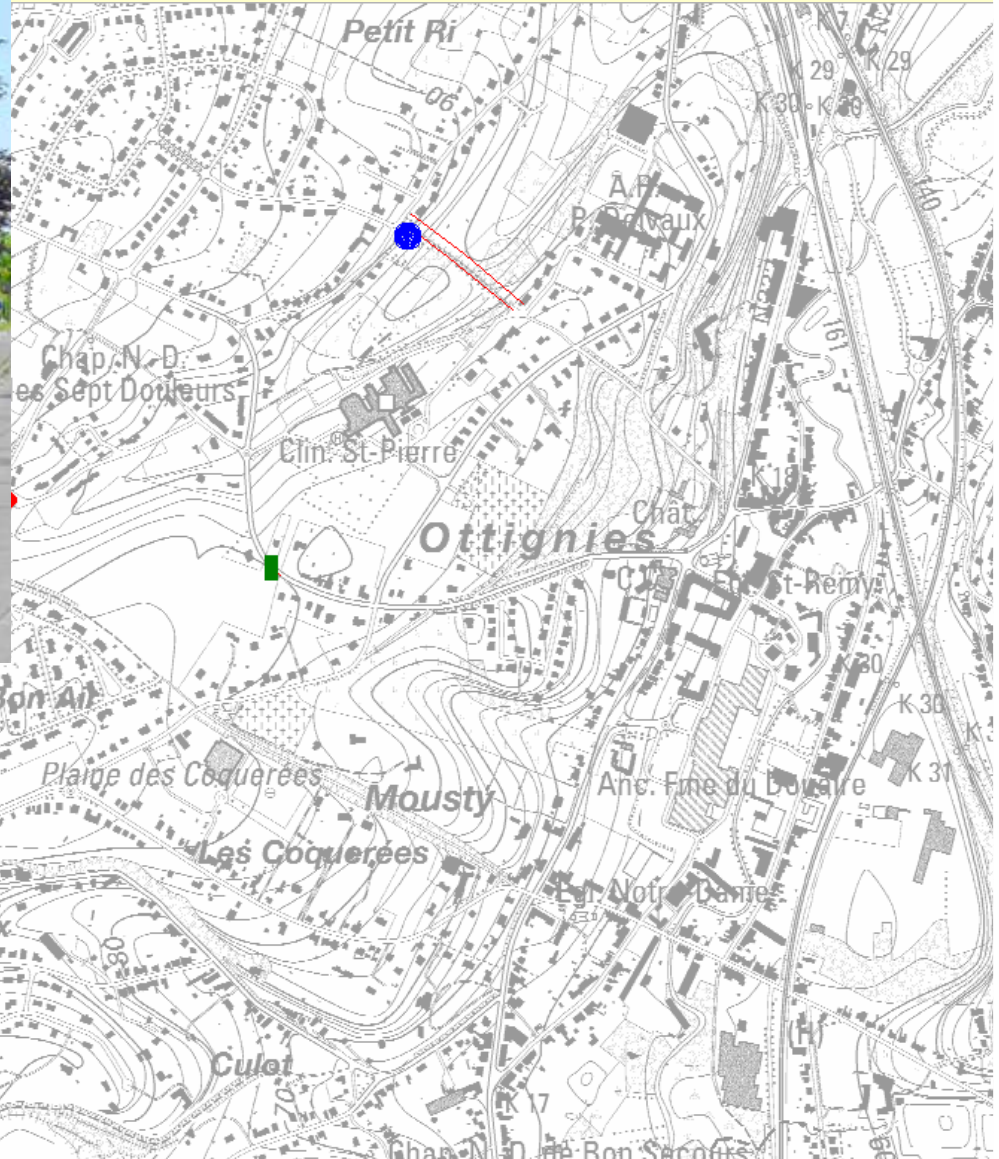
# Ottignies-Louvain-la-Neuve

Taxon
<i>Campanula rapunculus</i>
<i>Dactylis glomerata</i>
<i>Arrhenatherum elatius</i>
<i>Vicia hirsuta</i>
<i>Senecio jacobaea</i>
<i>Plantago lanceolata</i>
<i>Festuca rubra</i>
<i>Daucus carota</i>
<i>Prunus</i> sp.
<i>Vicia tetrasperma</i>
<i>Vicia sativa</i>
<i>Poa pratensis</i>
<i>Crepis capillaris</i>
<i>Bromus hordeaceus</i>
<i>Cerastium fontanum</i>

# Ottignies-Louvain-la-Neuve



# Ottignies-Louvain-la-Neuve



# Ottignies-Louvain-la-Neuve

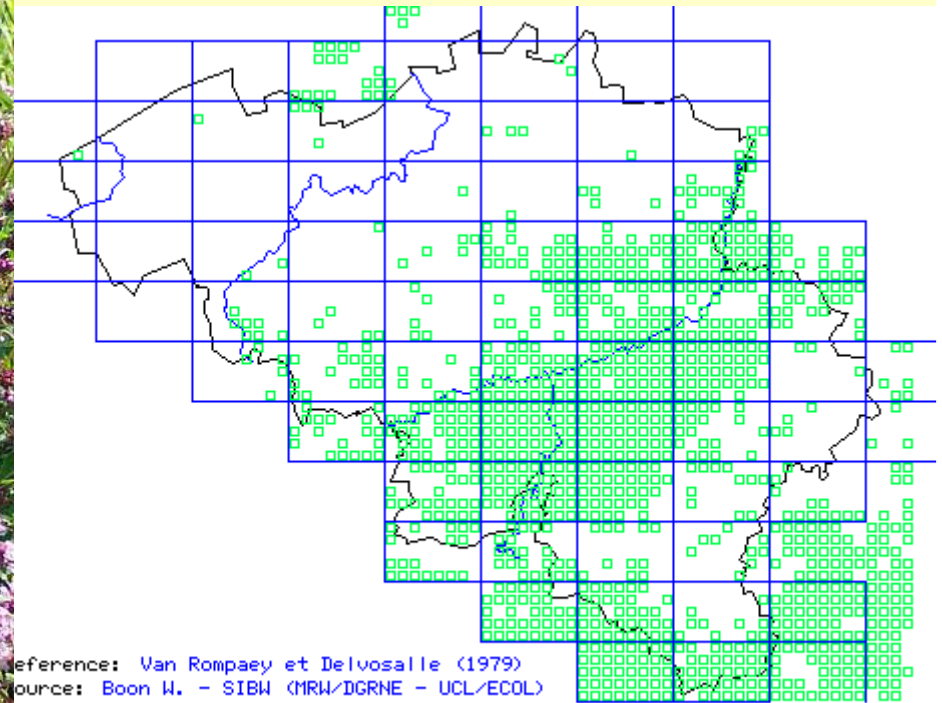
## Taxon

*Arrhenatherum elatius*  
*Origanum vulgare*  
*Vicia hirsuta*  
*Knautia arvensis*  
*Heracleum sphondylium*  
*Vicia tetrasperma*  
*Vicia sativa*  
*Convolvulus arvensis*  
*Galium aparine*  
*Plantago lanceolata*  
*Hieracium umbellatum*  
*Centaurea jacea*  
*Leucanthemum vulgare*  
*Lactuca serriola*  
*Lapsana communis*





## Carte de répartition de la plante en Belgique



Reference: Van Rompaey et Delvosalle (1979)  
Source: Boon W. - SIBW (MRW/IGRNE - UCL/ECOL)

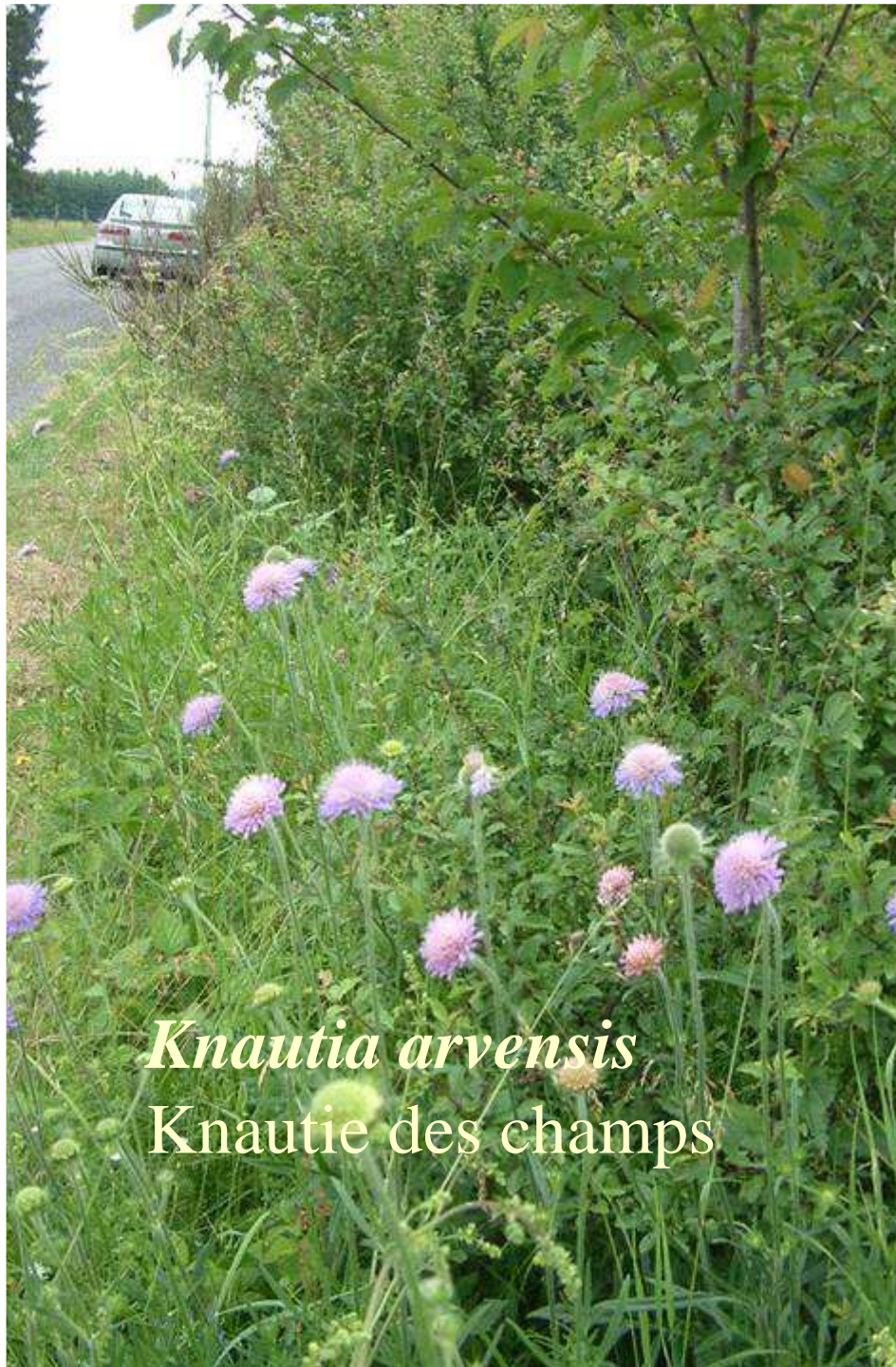
1775 - Origanum vulgare L.

*Origanum vulgare*  
Origan



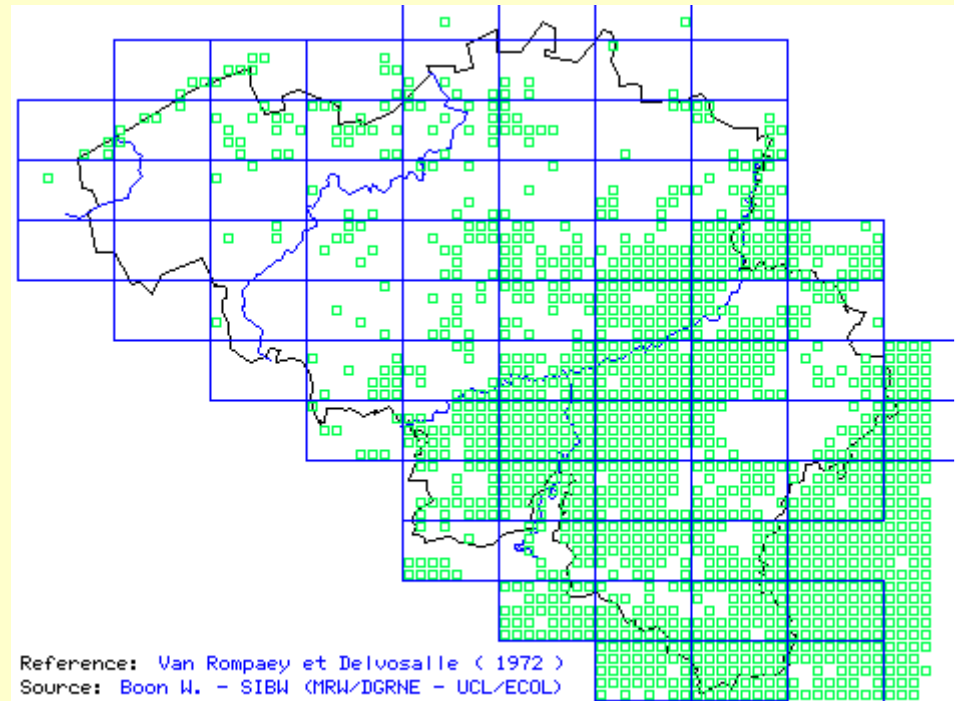
*Centaurea thuillieri*  
Centaurée des prés





*Knautia arvensis*  
Knautie des champs

## Carte de répartition de la plante en Belgique



Reference: Van Rompaey et Delvosalle ( 1972 )

Source: Boon W. - SIBW (MRW/IGRNE - UCL/ECOL)

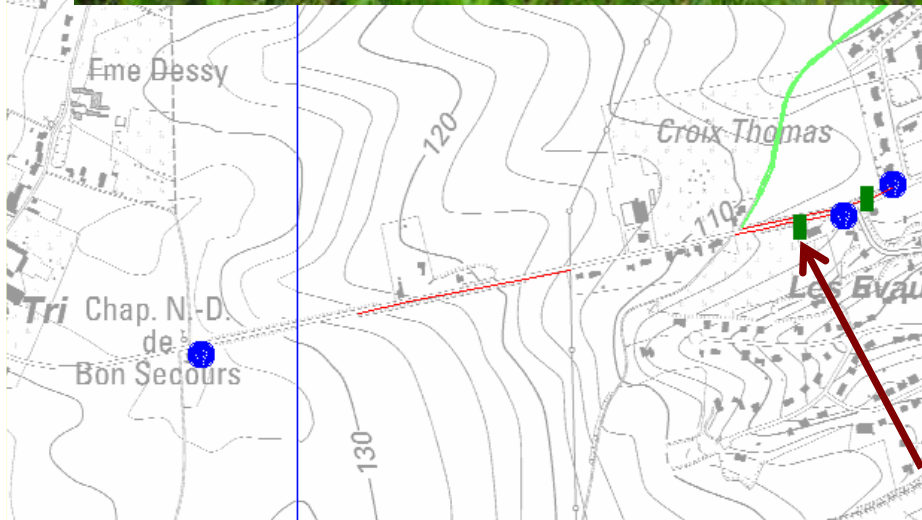
0956 - *Knautia arvensis* (L.) Coulter



*Leucanthemum vulgare* - Grande marguerite



# Ottignies-Louvain-la-Neuve



# Ottignies-Louvain-la-Neuve

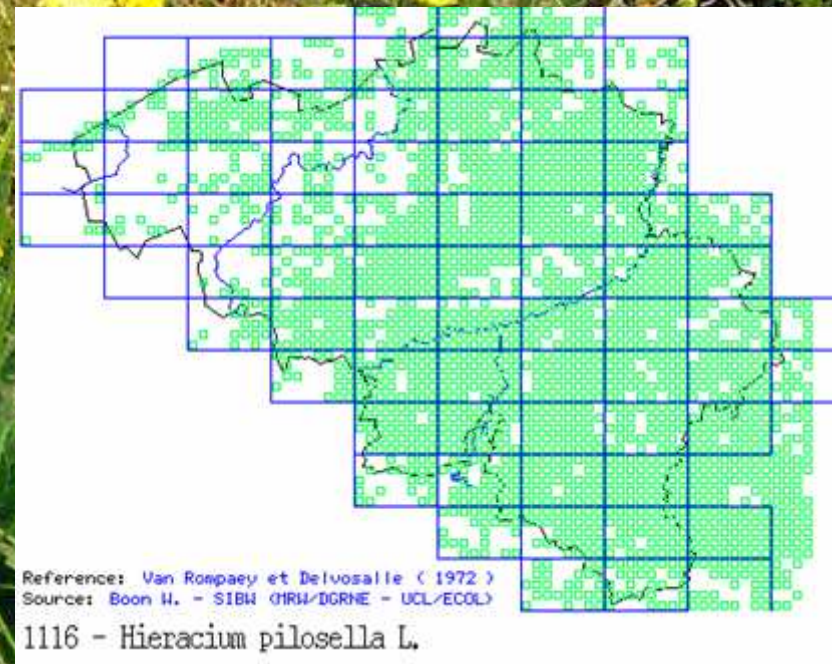
Taxon
<i>Hieracium umbellatum</i>
<i>Agrostis capillaris</i>
<i>Plantago lanceolata</i>
<i>Festuca rubra</i>
<i>Arrhenatherum elatius</i>
<i>Veronica chamaedrys</i>
<i>Senecio jacobaea</i>
<i>Hieracium pilosella</i>
<i>Dactylis glomerata</i>
<i>Lapsana communis</i>
<i>Vicia tetrasperma</i>
<i>Hypochaeris radicata</i>



*Hieracium umbellatum*  
Epervière en ombelle

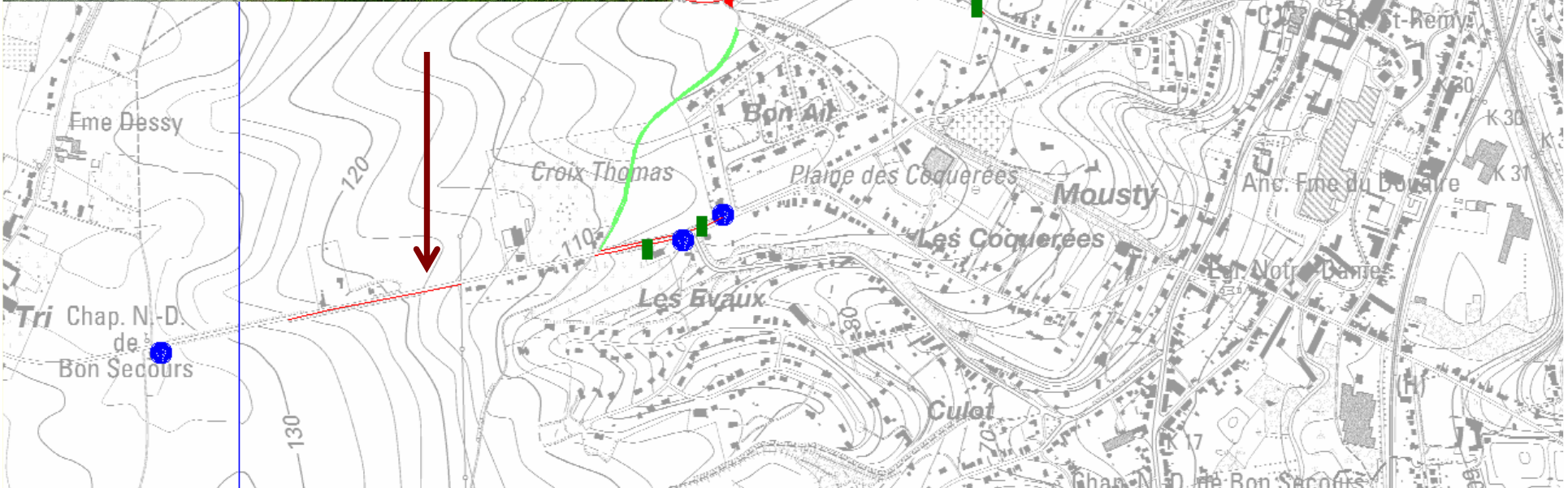
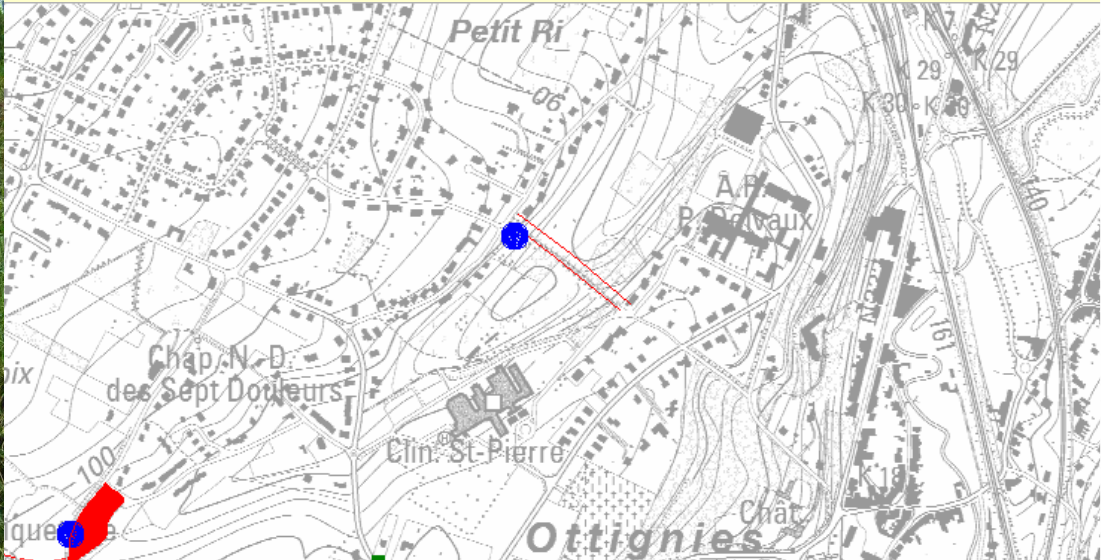
Carte de répartition  
de la plante en Belgique

*Hieracium pilosella*  
Epervière piloselle



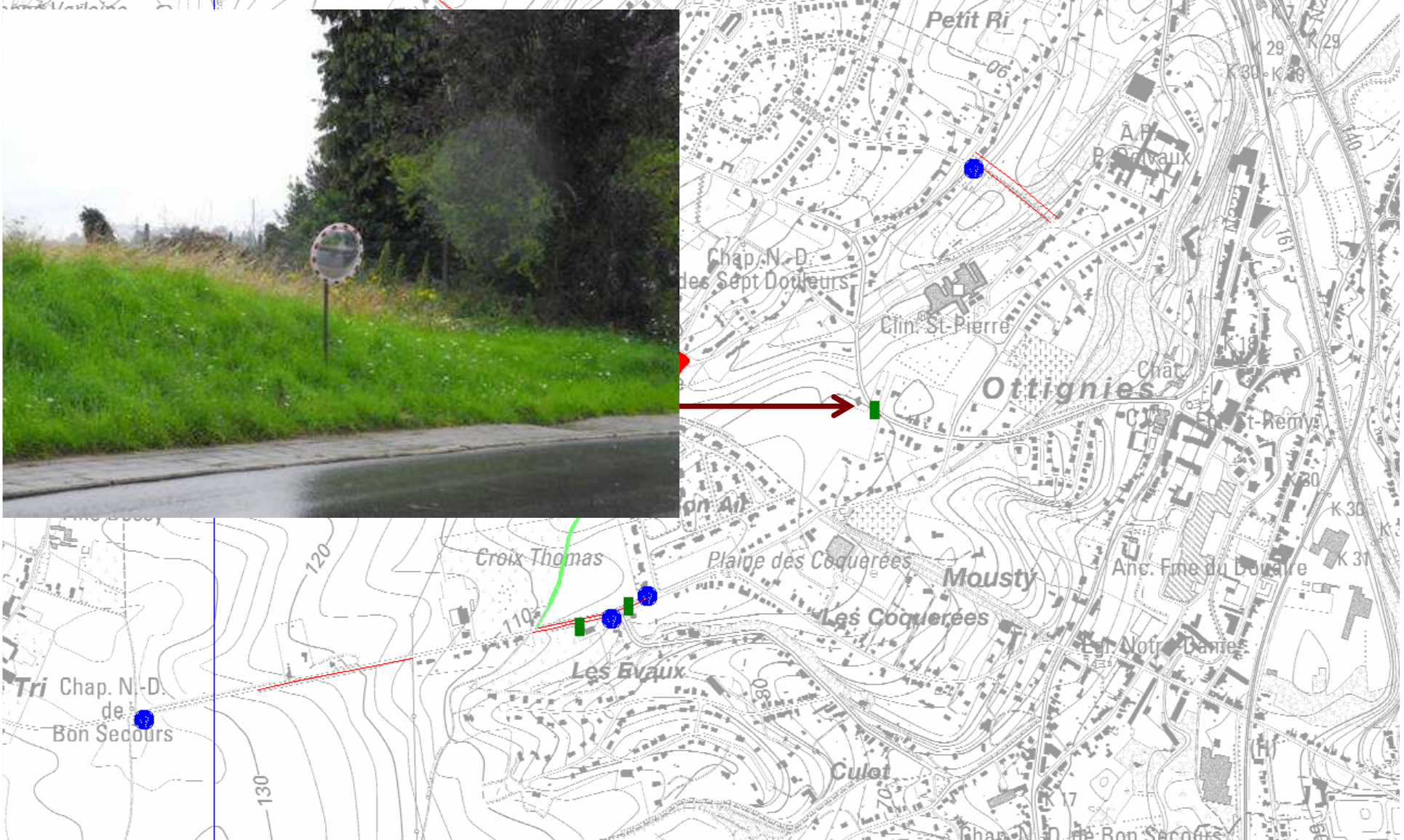


# Ottignies-Louvain-la-Neuve





# Ottignies-Louvain-la-Neuve



# Ottignies-Louvain-la-Neuve

## Taxon

*Arrhenatherum elatius*

*Pimpinella major*

*Plantago lanceolata*

*Urtica dioica*

*Trifolium pratense*

*Cerastium fontanum*

*Taraxacum* sp.

*Festuca rubra*

*Vicia hirsuta*

*Bromus hordeaceus*

*Equisetum arvense*

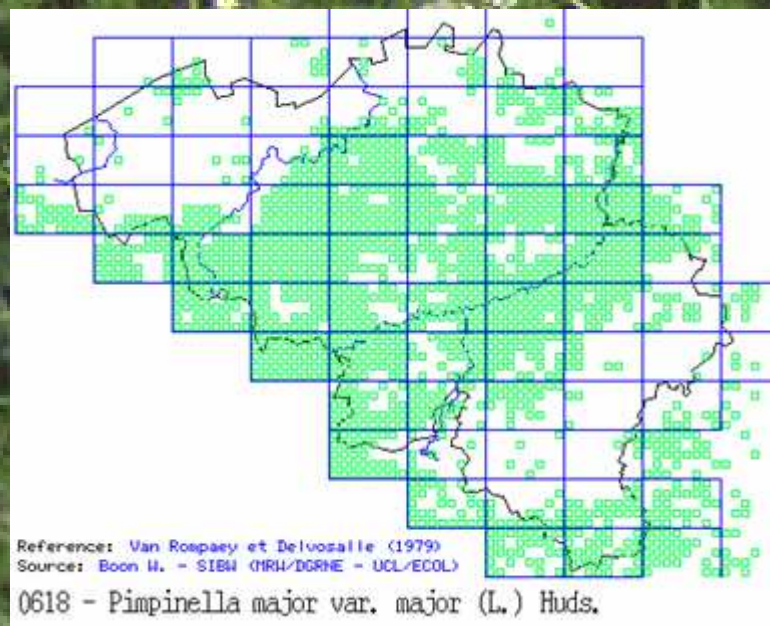
*Senecio jacobaea*

*Daucus carota*

*Lapsana communis*

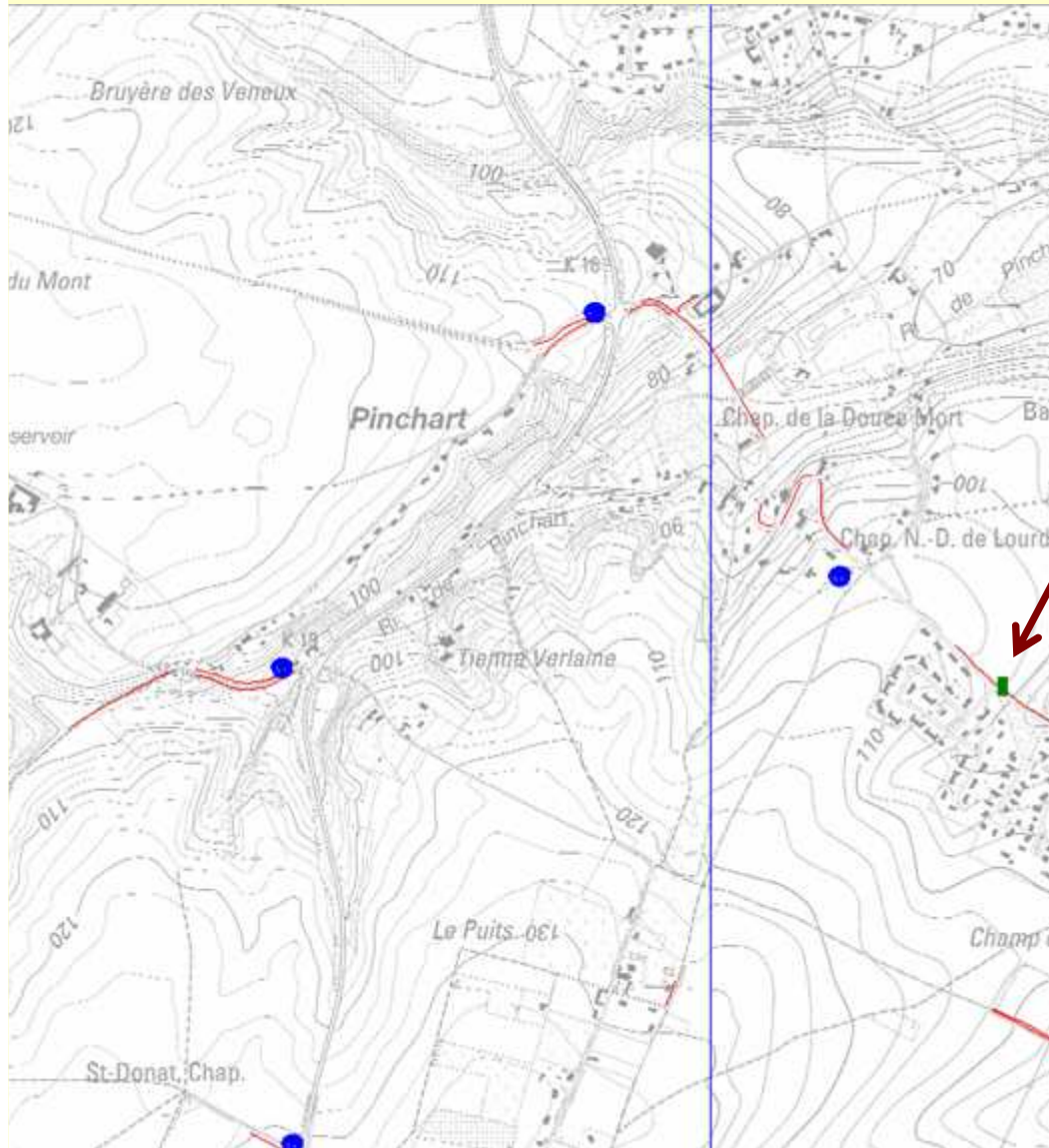
*Ranunculus acris*

## Carte de répartition de la plante en Belgique



*Pimpinella major*  
Grand boucage

# Ottignies-Louvain-la-Neuve





# Ottignies-Louvain-la-Neuve

## Taxon

*Arrhenatherum elatius*

*Hypochaeris radicata*

*Dactylis glomerata*

*Campanula rapunculus*

*Vicia sativa*

*Hypericum perforatum*

*Trifolium arvense*

*Lotus corniculatus*

*Bromus sterilis*

*Daucus carota*

*Senecio jacobaea*

*Plantago lanceolata*

*Agrostis capillaris*

*Bromus hordeaceus*

*Poa pratensis*

*Aphanes arvensis*

*Lactuca serriola*





# Ottignies-Louvain-la-Neuve



Ottignies-Louvain-la-Neuve

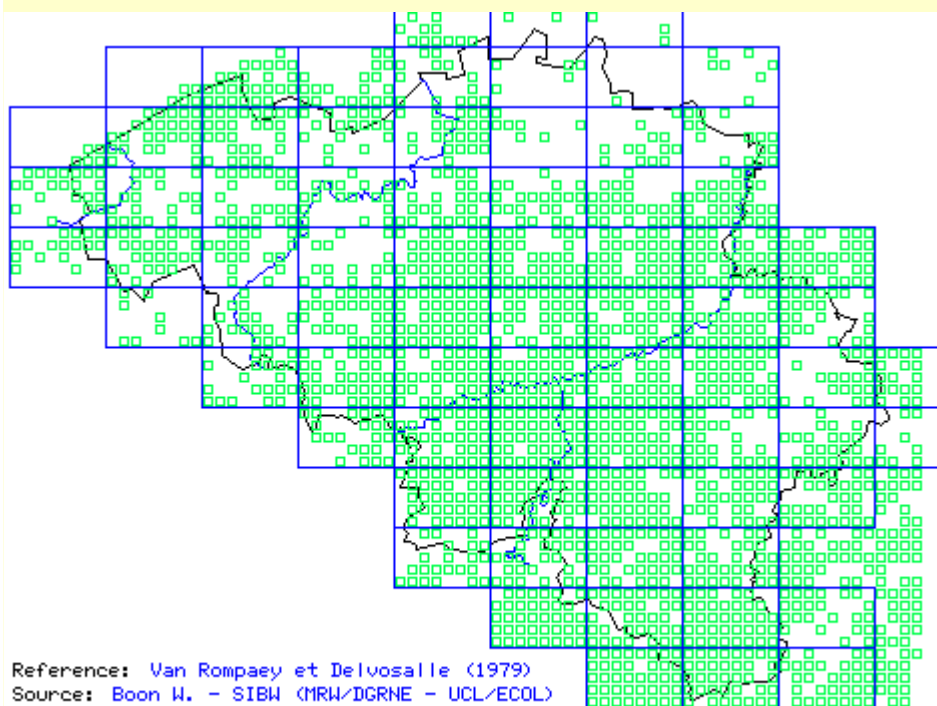
*Trifolium arvense*  
Pied-de-lièvre



# Ottignies-Louvain-la-Neuve



## Carte de répartition des observations



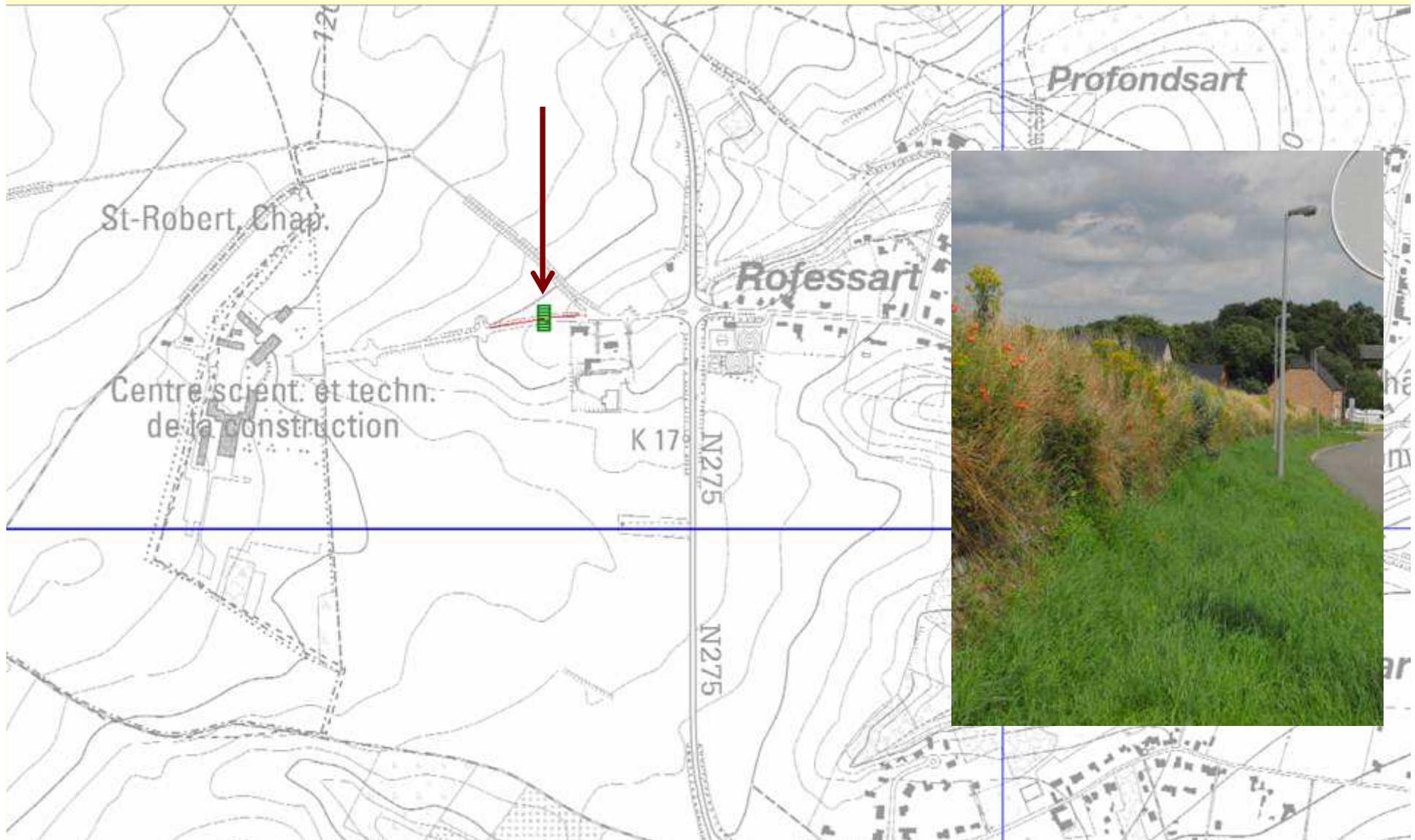
Reference: Van Rompaey et Delvosalle (1979)  
Source: Boon W. - SIBW (MRW/IGRNE - UCL/ECOL)

0383 - *Lotus corniculatus* L.

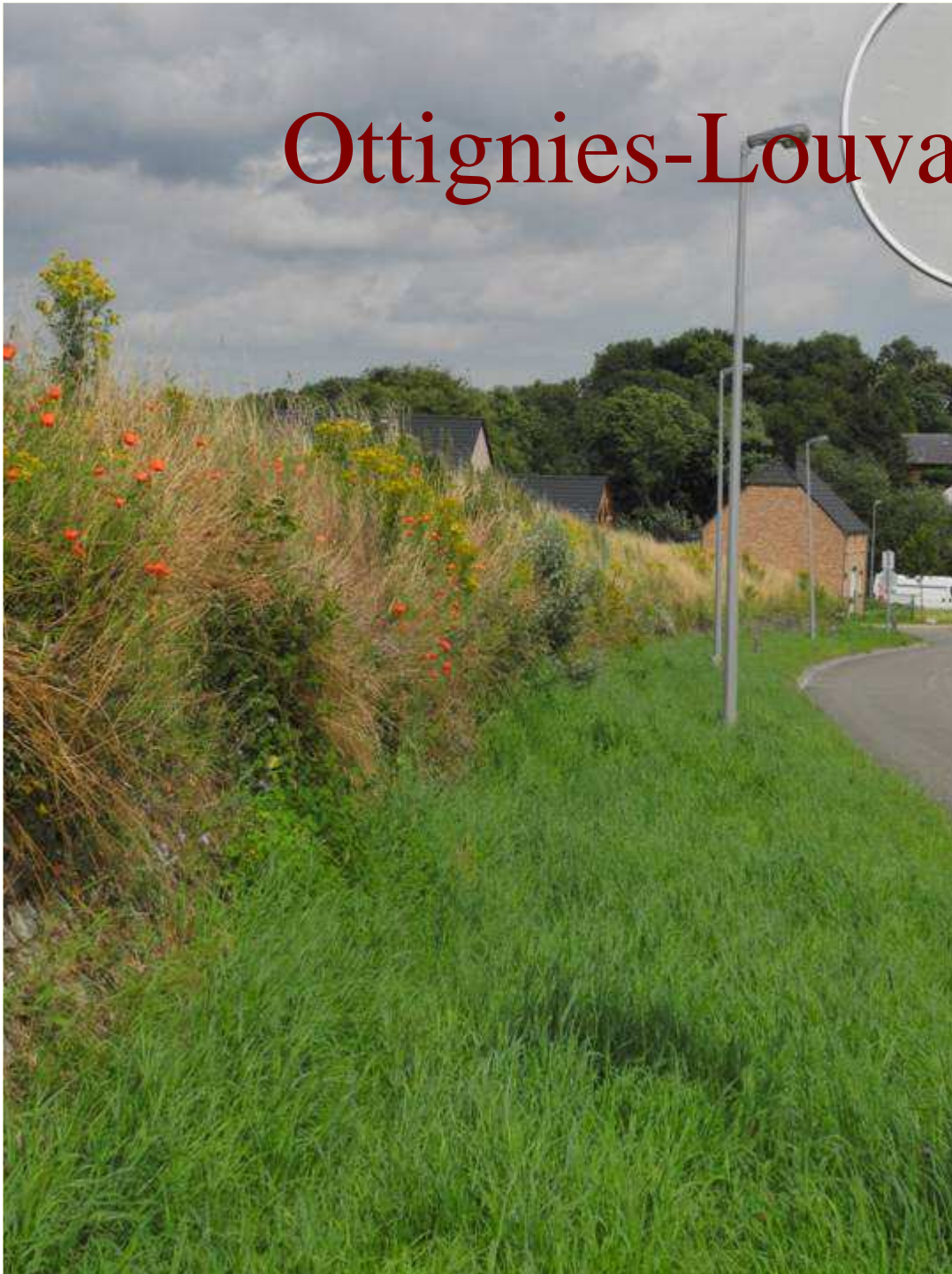


*Lotus corniculatus*  
Lotier corniculé

# Ottignies-Louvain-la-Neuve



# Ottignies-Louvain-la-Neuve



## Taxon

*Arrhenatherum elatius*  
*Achillea millefolium*  
*Dactylis glomerata*  
*Linaria vulgaris*  
*Vicia sativa*  
*Senecio jacobaea*  
*Plantago lanceolata*  
*Rosa canina* s.l.  
*Leucanthemum vulgare*  
*Daucus carota*  
*Campanula rapunculus*  
*Papaver rhoeas*  
*Festuca rubra*  
*Sonchus asper*  
*Myosotis arvensis*  
*Hypericum perforatum*  
*Aphanes arvensis*  
*Ranunculus repens*  
*Lapsana communis*



SAUF  
DESSERTTE LOCALE

CHARROI AGRICOLE  
A 500 m

Ottignies-Louvain-la-Neuve

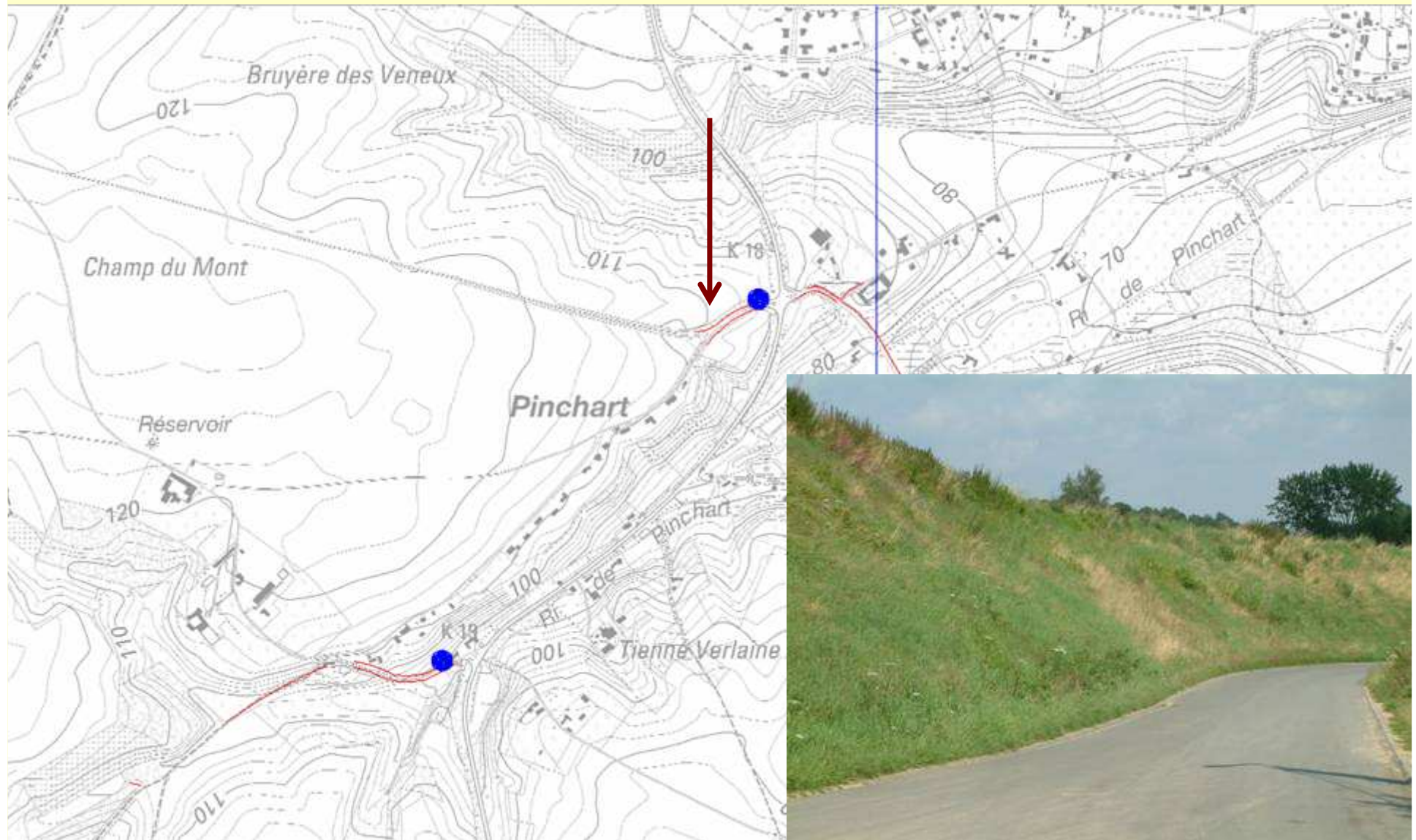




# Ottignies-Louvain-la-Neuve



# Ottignies-Louvain-la-Neuve





Ottignies-Louvain-la-Neuve

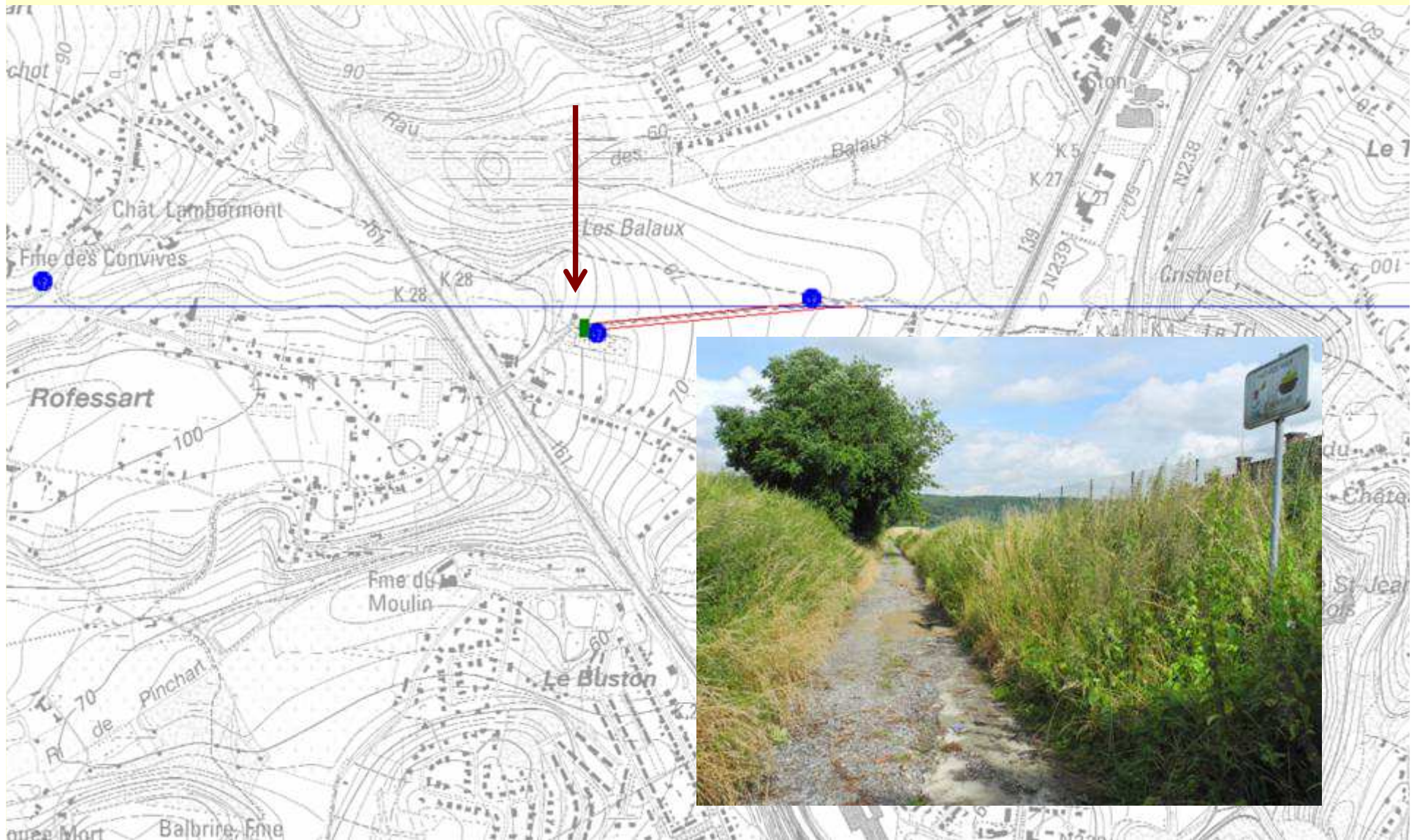


Ottignies-Louvain-la-Neuve



Ottignies-Louvain-la-Neuve

# Ottignies-Louvain-la-Neuve



# Ottignies-Louvain-la-Neuve

## Taxon

*Urtica dioica*

*Arrhenatherum elatius*

*Heracleum sphondylium*

*Calystegia sepium*

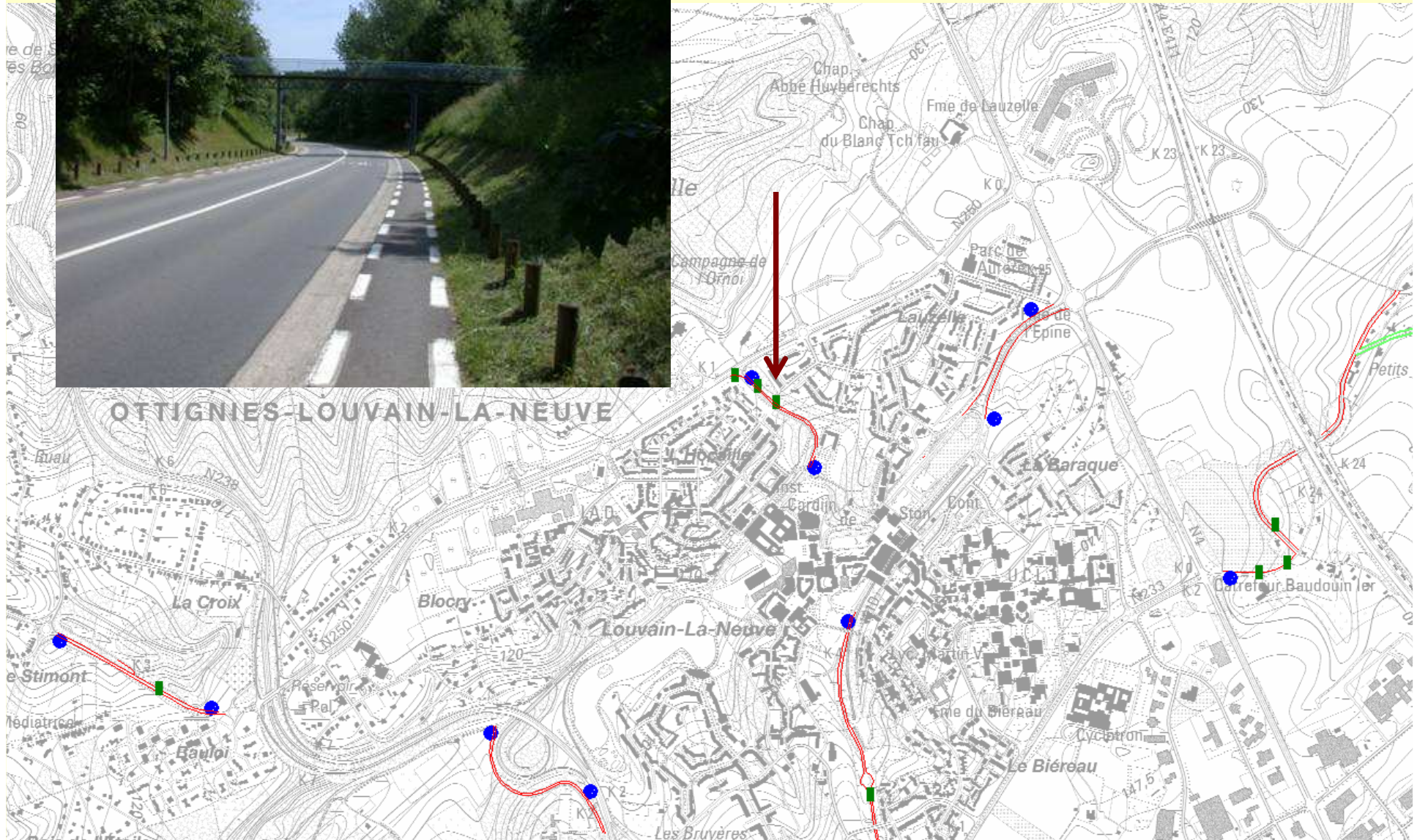
*Galium aparine*

*Equisetum arvense*

*Lapsana communis*



# Ottignies-Louvain-la-Neuve







# Ottignies-Louvain-la-Neuve

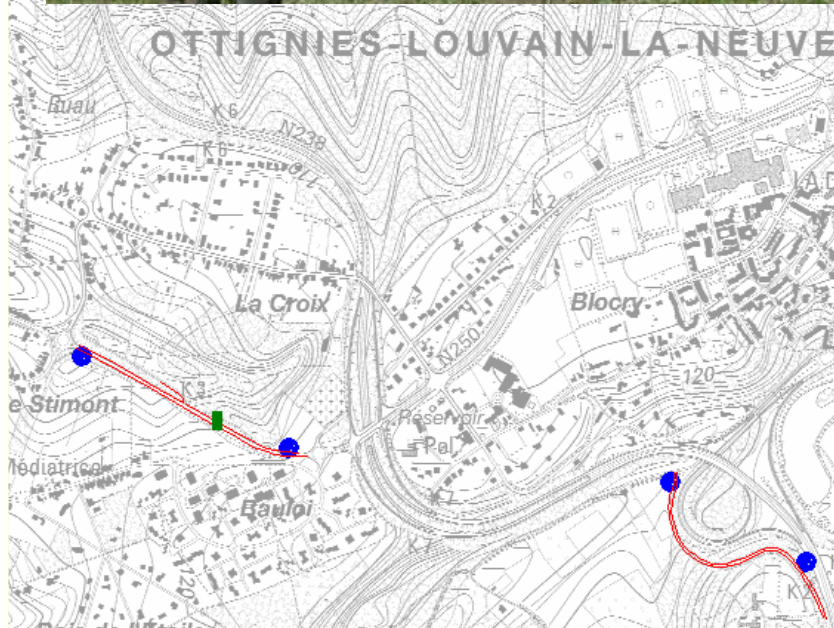
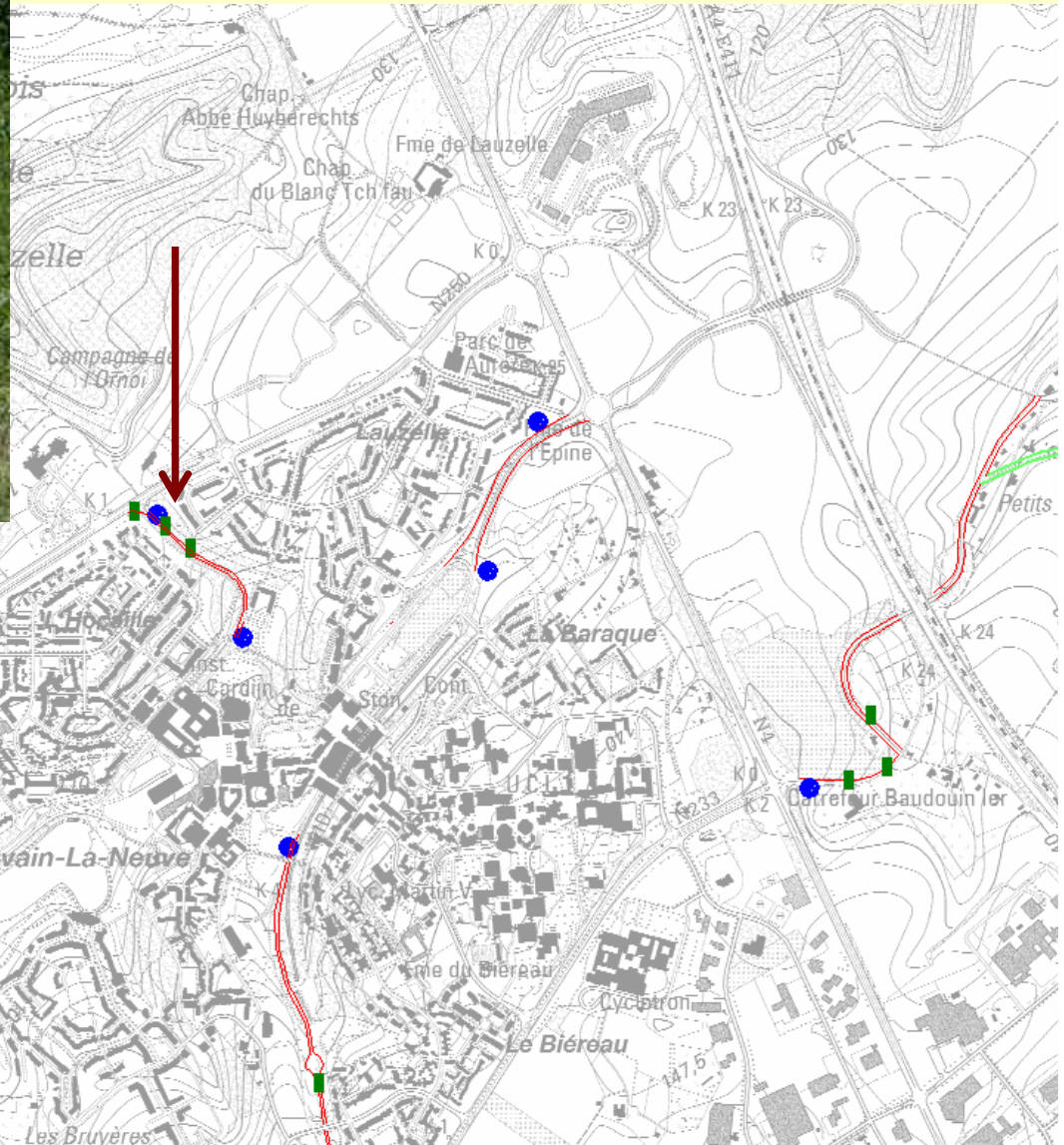
Taxon

Malva neglecta  
Plantago lanceolata  
Campanula rapunculus  
Hypericum perforatum  
Daucus carota  
Senecio jacobaea  
Trifolium pratense  
Trifolium repens  
Cerastium fontanum  
Oenothera parviflora  
Malva moschata  
Lapsana communis  
Hypochaeris radicata  
Festuca rubra  
Festuca pratensis  
Crepis capillaris  
Rubus sp.  
Calystegia sepium  
Equisetum arvense  
Solidago canadensis

Taxon

Solidago canadensis  
Trifolium dubium  
Prunella vulgaris  
Ranunculus repens  
Veronica agrestis  
Vicia sativa  
Taraxacum sp.  
Sonchus asper  
Geranium dissectum  
Fraxinus excelsior  
Epilobium tetragonum  
Verbascum thapsus  
Anthoxanthum odoratum  
Arrhenatherum elatius  
Geum urbanum  
Bellis perennis  
Inula conyzae  
Prunus avium  
Tragopogon pratensis

# Ottignies-Louvain-la-Neuve



# Ottignies-Louvain-la-Neuve

## Taxon

Equisetum arvense  
Holcus lanatus  
Plantago lanceolata  
Rubus sp.  
Senecio jacobaea  
Valerianella sp.  
Epilobium tetragonum  
Malva moschata  
Crepis capillaris  
Lotus corniculatus  
Festuca rubra  
Vicia hirsuta  
Vicia tetrasperma  
Trifolium pratense  
Vicia sativa  
Artemisia vulgaris  
Geranium dissectum  
Lolium perenne  
Taraxacum sp.



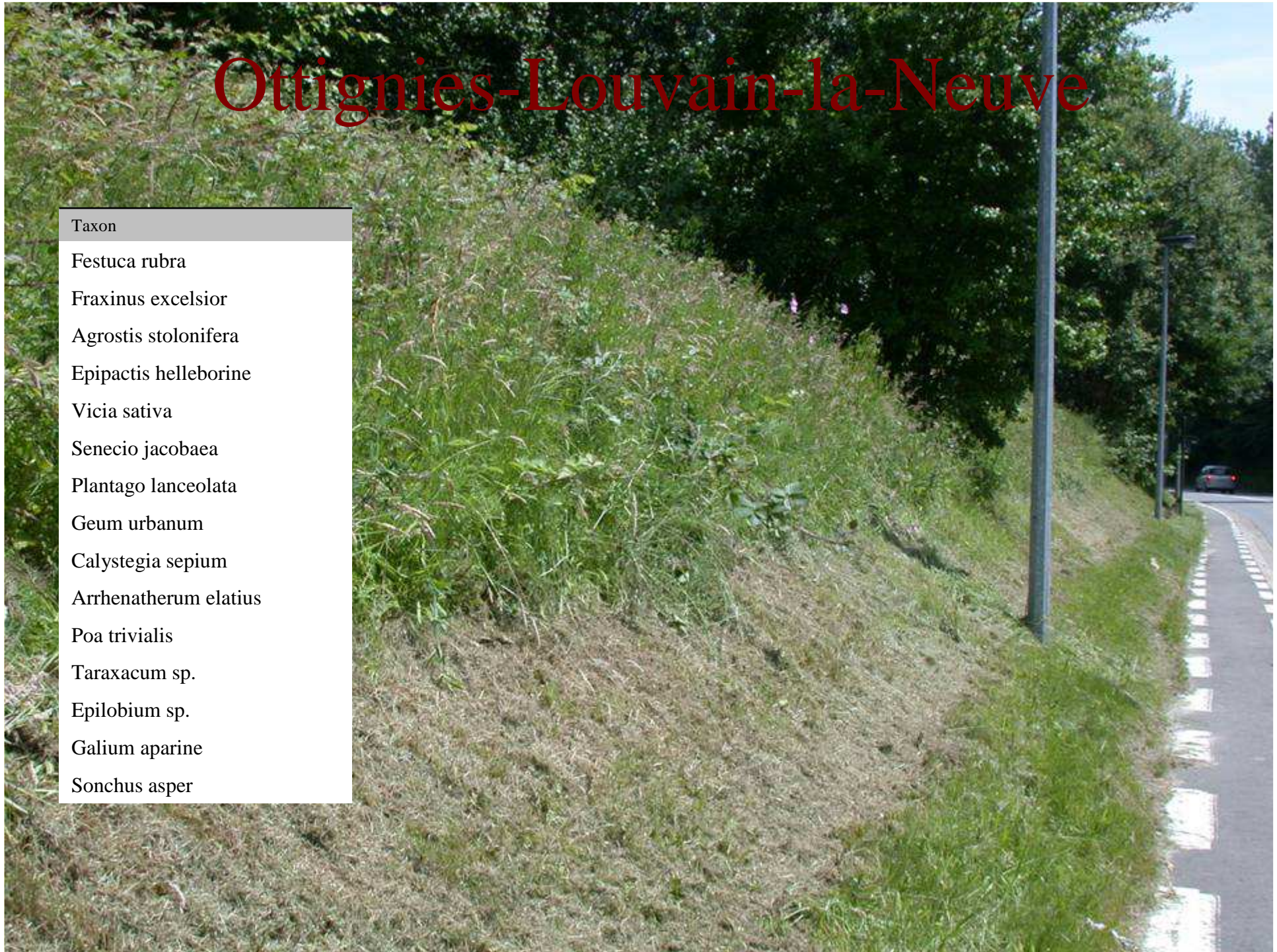
# Ottignies-Louvain-la-Neuve



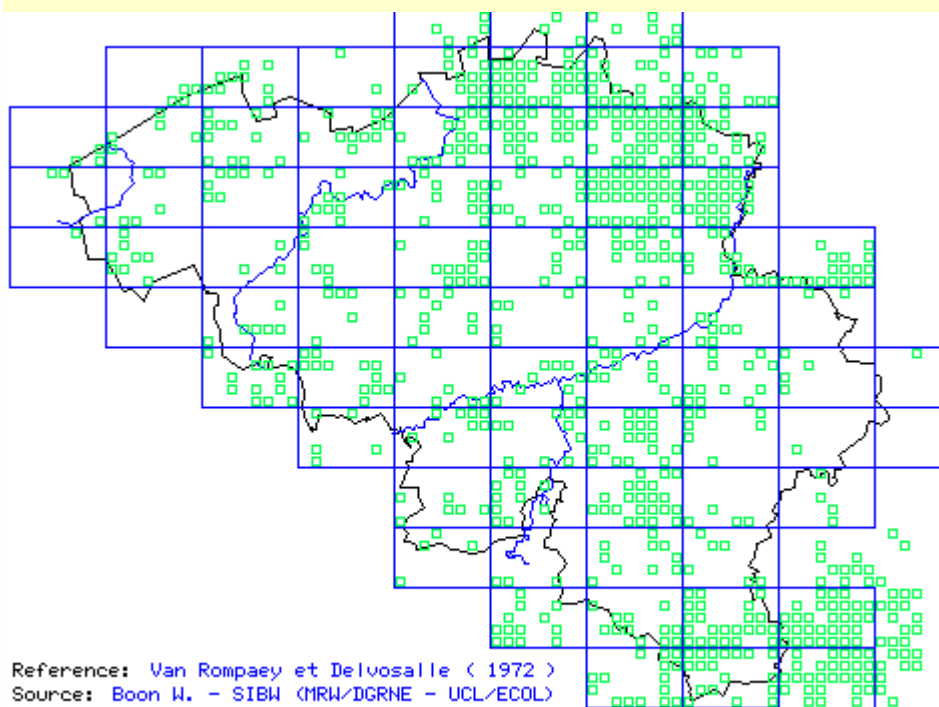
# Ottignies-Louvain-la-Neuve

## Taxon

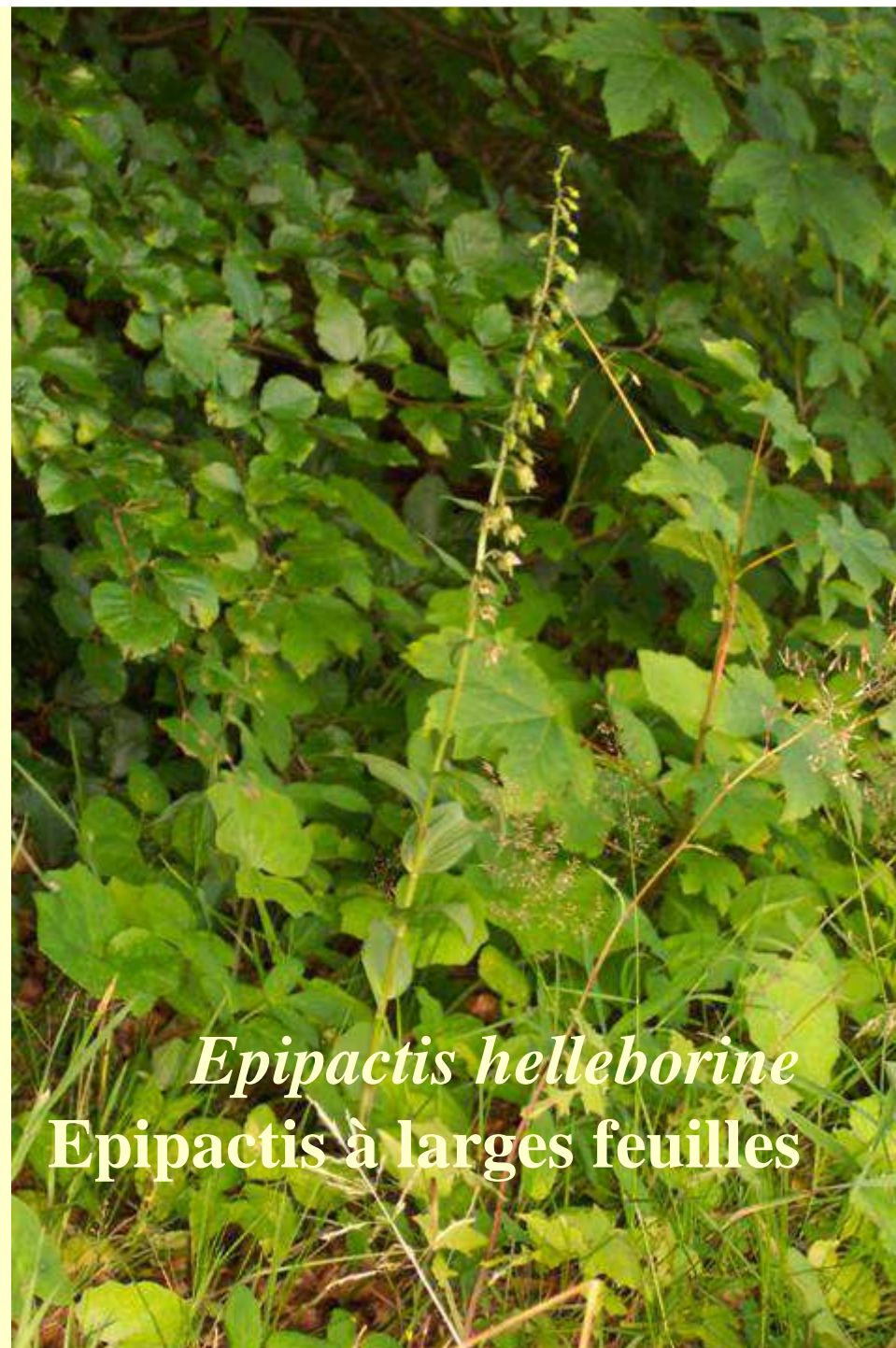
*Festuca rubra*  
*Fraxinus excelsior*  
*Agrostis stolonifera*  
*Epipactis helleborine*  
*Vicia sativa*  
*Senecio jacobaea*  
*Plantago lanceolata*  
*Geum urbanum*  
*Calystegia sepium*  
*Arrhenatherum elatius*  
*Poa trivialis*  
*Taraxacum* sp.  
*Epilobium* sp.  
*Galium aparine*  
*Sonchus asper*



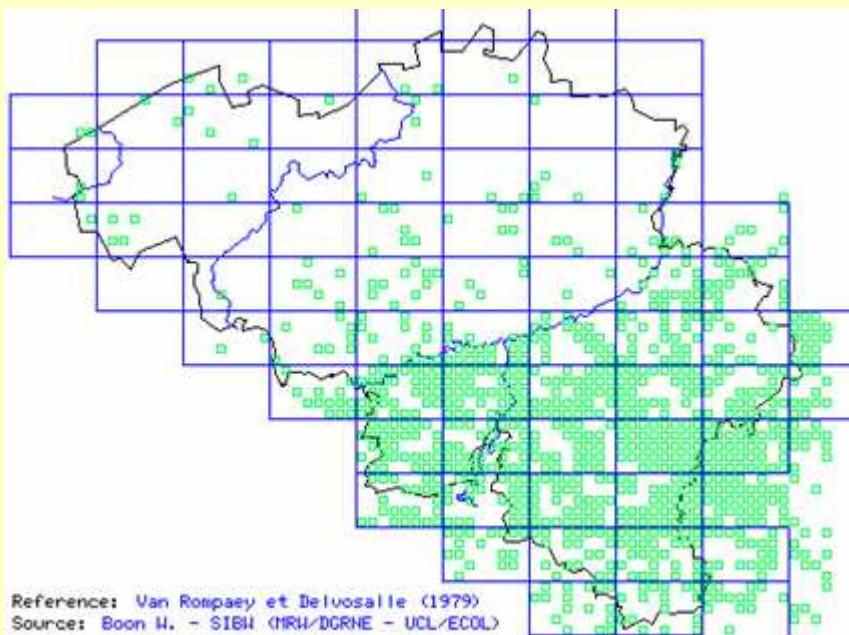
## Carte de répartition des observations



1237 - *Epipactis helleborine* (L.) Crantz



## Carte de répartition de la plante en Belgique



Reference: Van Rompaey et Delvosalle (1979)  
Source: Boon W. - SIBH (MIRH/DCRNE - UCL/ECOL)

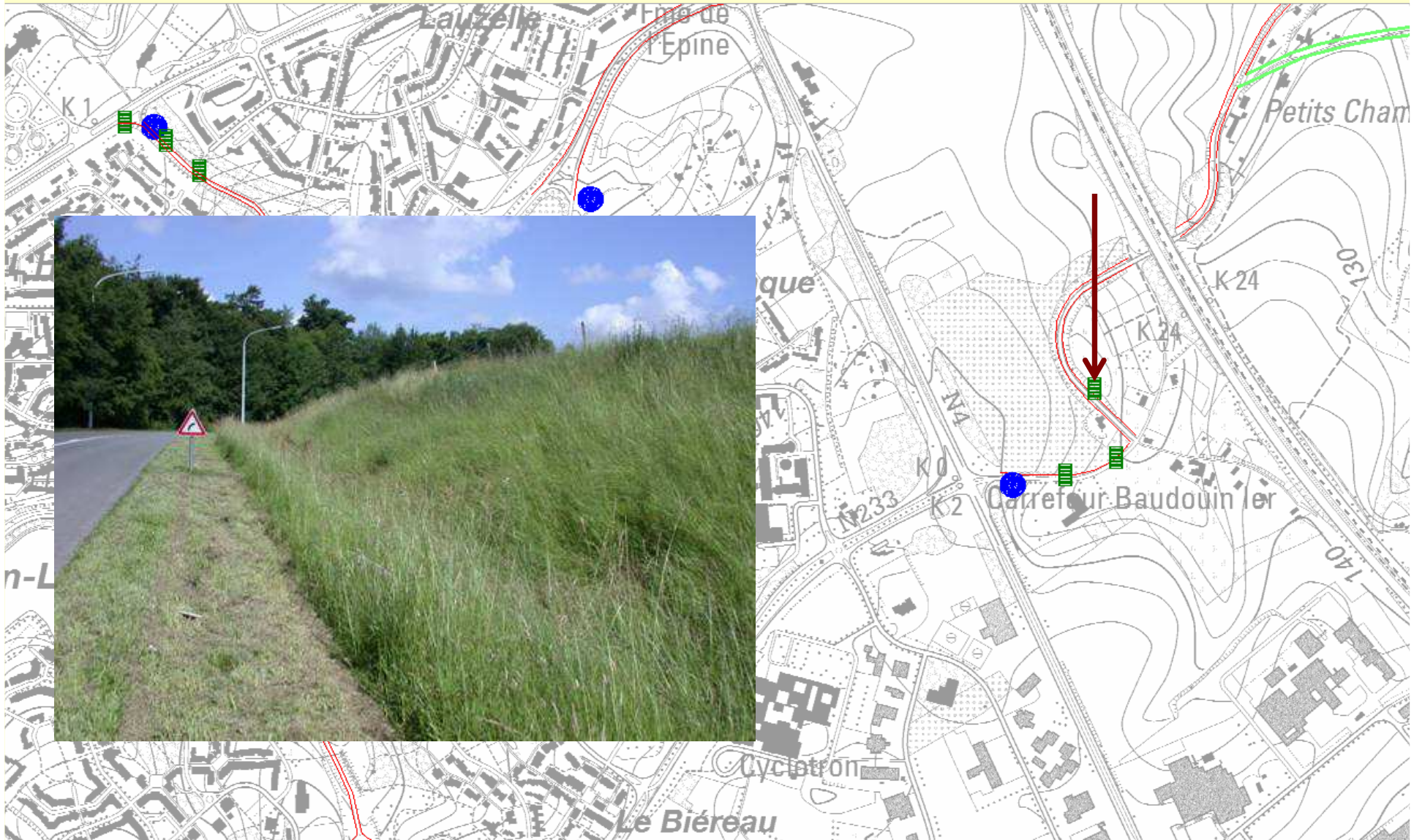
0540 - *Malva moschata* L.



*Malva moschata*  
Mauve musquée



# Ottignies-Louvain-la-Neuve



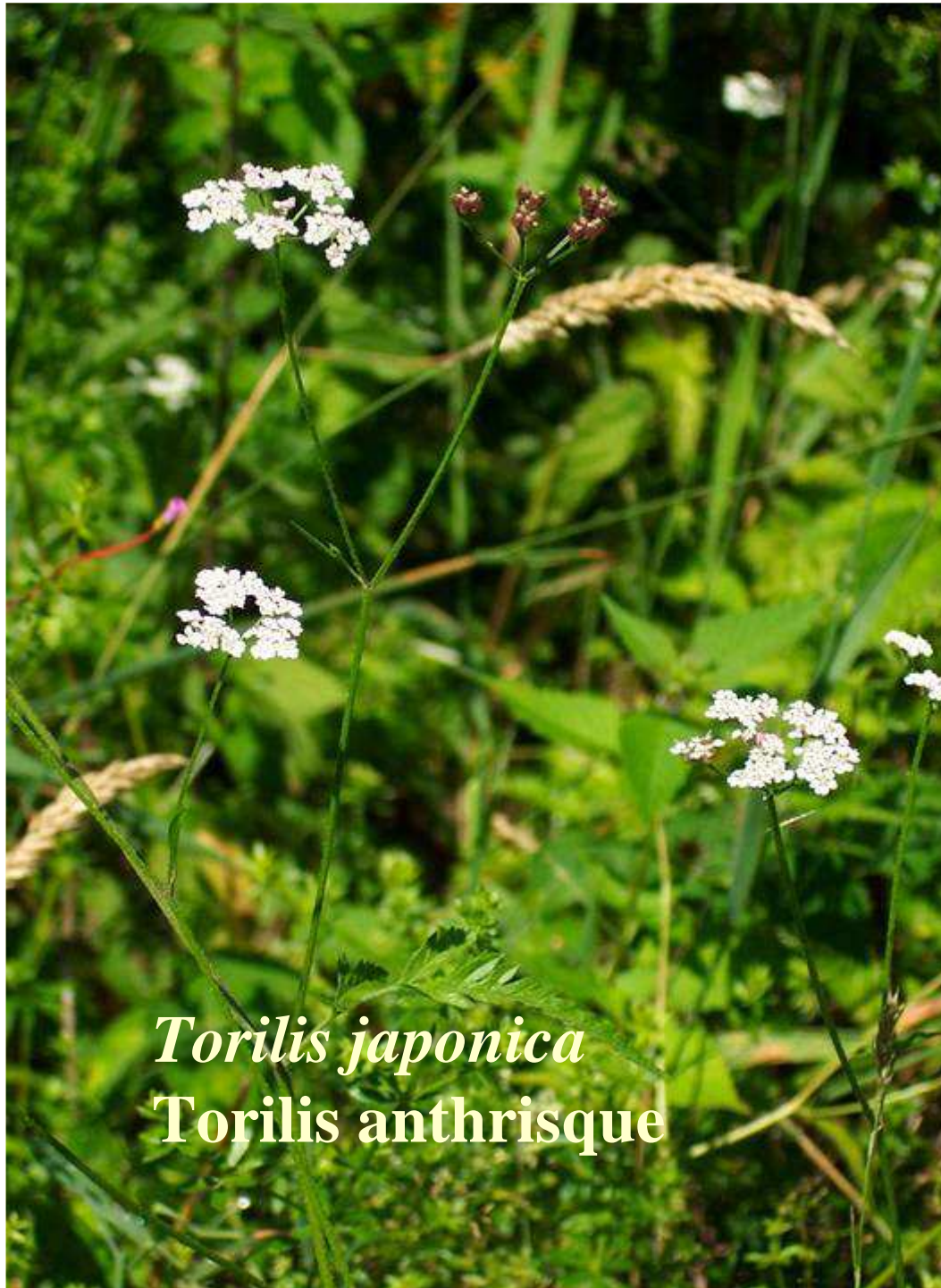
# Ottignies-Louvain-la-Neuve

## Taxon

Arrhenatherum elatius  
Equisetum arvense  
Plantago lanceolata  
Senecio jacobaea  
Dactylis glomerata  
Festuca rubra  
Heracleum sphondylium  
Holcus lanatus  
Urtica dioica  
Vicia hirsuta  
Veronica agrestis  
Poa pratensis  
Vicia sativa  
Epilobium sp.  
Medicago lupulina  
Ranunculus repens  
Torilis japonica  
Achillea millefolium  
Eupatorium cannabinum  
Galeopsis tetrahit  
Galium aparine  
Geranium dissectum  
Rumex acetosa

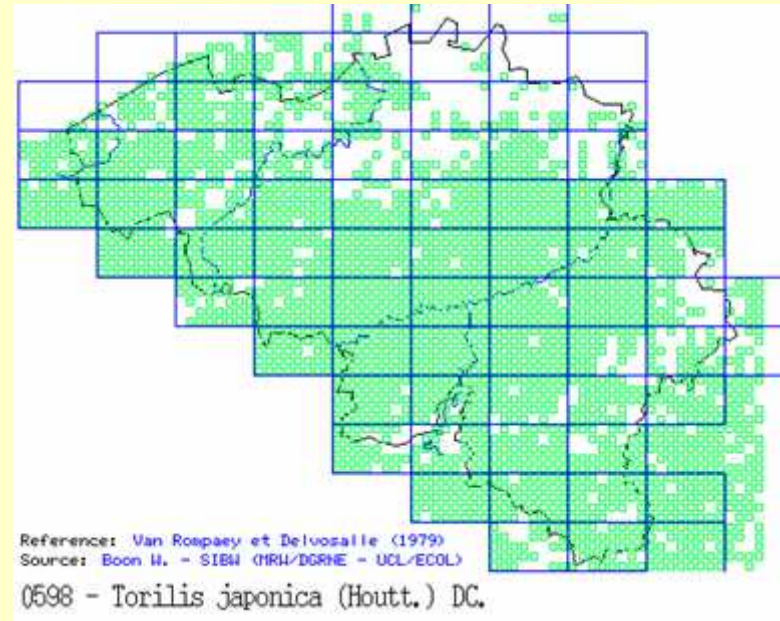


*Rumex acetosa* - Oseille sauvage



*Torilis japonica*  
*Torilis anthriscus*

## Carte de répartition de la plante en Belgique



Reference: Van Rospaey et Delvosalle (1979)  
Source: Boon W. - SIBW (IRH/DGRNE - UCL/ECOL)  
0598 - *Torilis japonica* (Houtt.) DC.

# Ottignies-Louvain-la-Neuve



# Ottignies-Louvain-la-Neuve

## Taxon

*Agrostis capillaris*  
*Arrhenatherum elatius*  
*Daucus carota*  
*Plantago lanceolata*  
*Rubus* sp.  
*Achillea millefolium*  
*Trifolium dubium*  
*Rumex acetosella*  
*Festuca rubra*  
*Poa compressa*  
*Senecio jacobaea*  
*Hypericum perforatum*  
*Poa pratensis*  
*Vicia sativa*  
*Dactylis glomerata*  
*Vicia hirsuta*  
*Geranium columbinum*  
*Aphanes arvensis*  
*Galium aparine*

# Ottignies-Louvain-la-Neuve



# Ottignies-Louvain-la-Neuve

## Taxon

*Epilobium hirsutum*

*Galium aparine*

*Urtica dioica*

*Rubus* sp.

*Convolvulus arvensis*

*Galeopsis tetrahit*

*Eupatorium cannabinum*

*Artemisia vulgaris*

*Aegopodium podagraria*

*Cirsium arvense*

*Bromus sterilis*

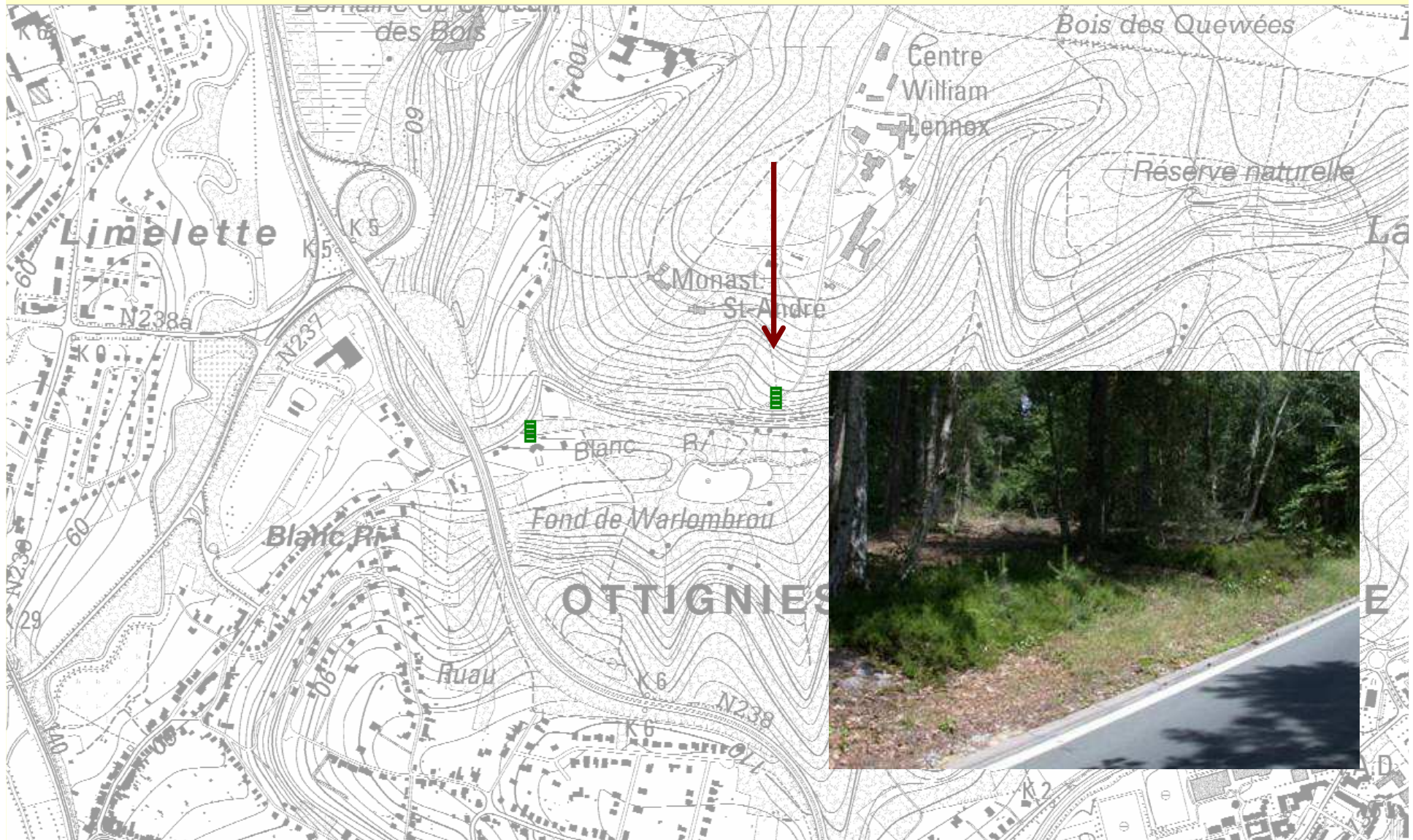
*Arrhenatherum elatius*

*Vicia sativa*

*Elymus repens*



# Ottignies-Louvain-la-Neuve



A photograph of a road shoulder with a list of plant taxa overlaid. The road is asphalt with a white line, and the shoulder is covered in grass and small plants. In the background, there is a dense forest of trees. The list of taxa is as follows:

Taxon

*Calluna vulgaris*

*Rumex acetosella*

*Pinus sylvestris*

*Betula pendula*

*Quercus robur*



*Rumex acetosella*  
Petite oseille

# Ottignies-Louvain-la-Neuve



# Ottignies-Louvain-la-Neuve

## Taxon

Lathyrus pratensis

Holcus lanatus

Urtica dioica

Arrhenatherum elatius

Calystegia sepium

Poa trivialis

Potentilla sterilis

Trifolium pratense

Vicia sepium

Equisetum arvense

Hypericum perforatum

Plantago lanceolata

Ranunculus repens

Rubus sp.

Campanula rapunculus

Lapsana communis

Bromus hordeaceus

Hypochaeris radicata









# Ottignies-Louvain-la-Neuve

