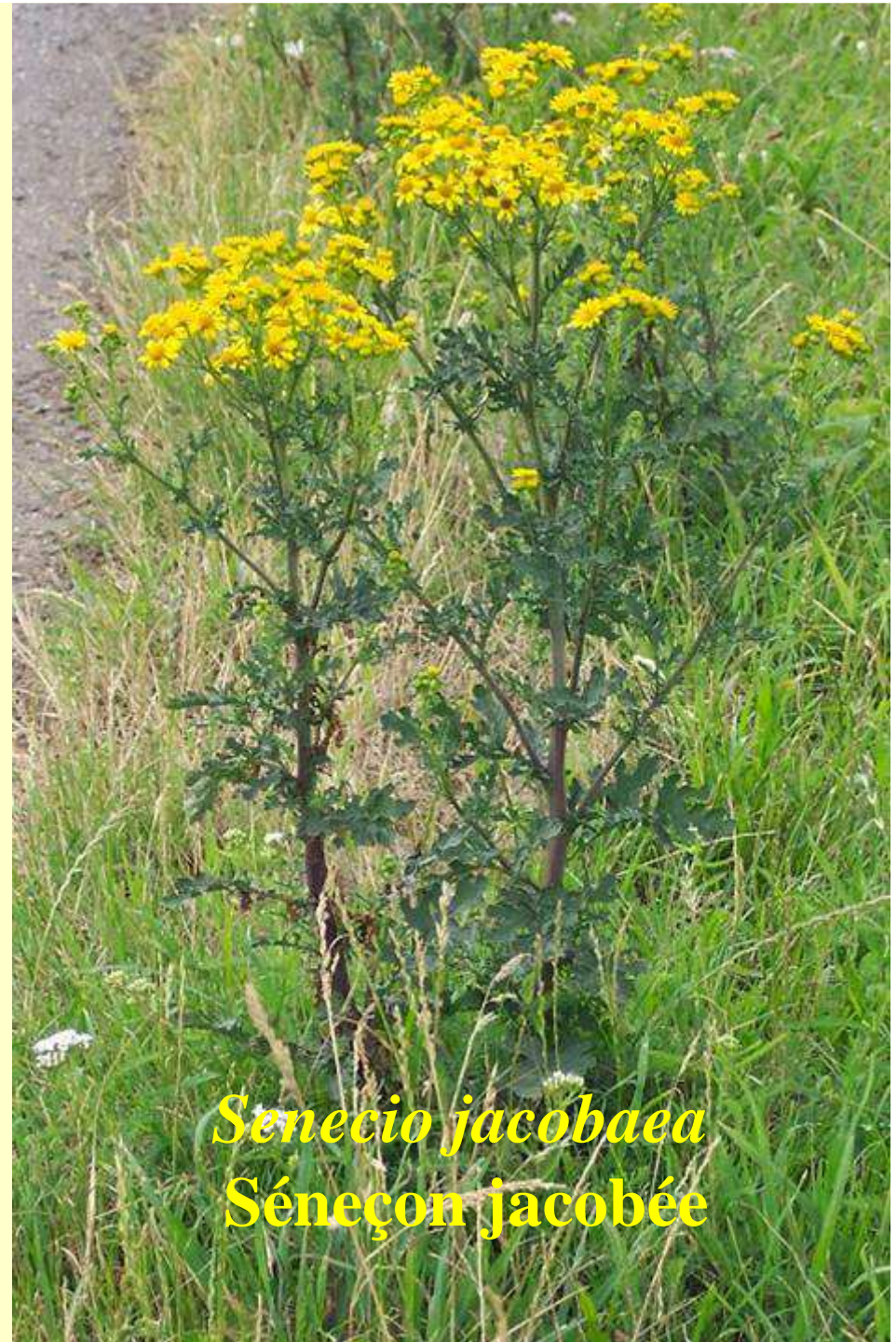
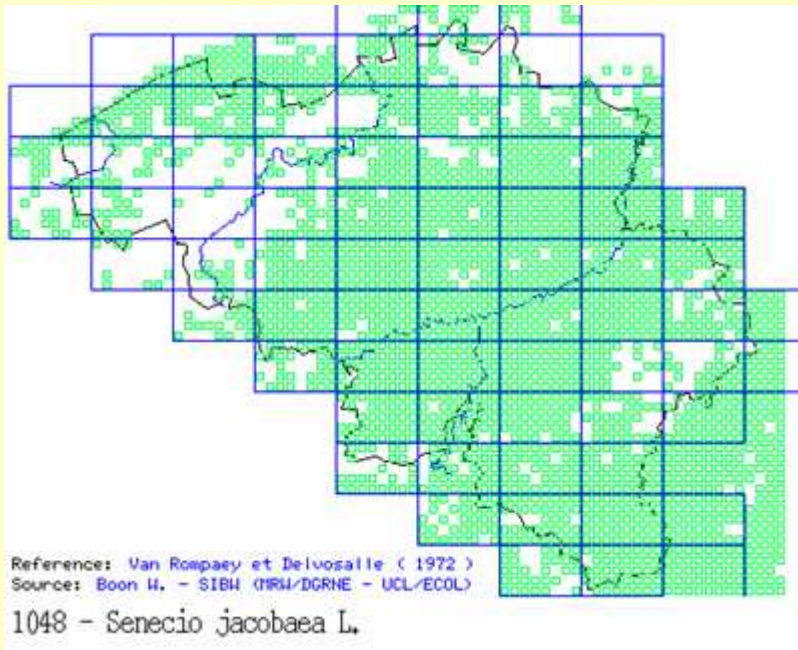


17 relevés botaniques réalisés sur les bords de routes
100 espèces végétales observées



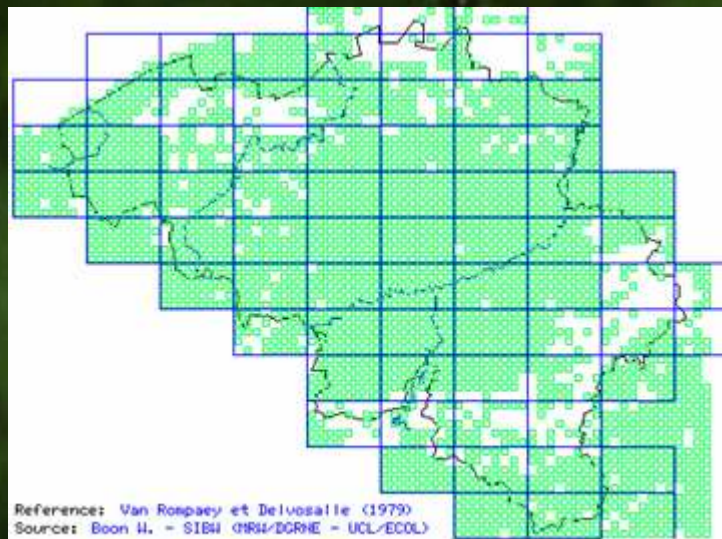
Ottignies-Louvain-la-Neuve

Carte de répartition des observations





Carte de répartition
de la plante en Belgique



0651 - *Daucus carota* L.

Daucus carota
Carotte



Ottignies-Louvain-la-Neuve





Taxon

Holcus lanatus

Lotus corniculatus

Trifolium pratense

Equisetum arvense

Festuca rubra

Cerastium fontanum

Daucus carota

Campanula rapunculus

Plantago lanceolata

Trifolium repens

Poa pratensis

Agrostis capillaris

Senecio jacobaea

Ranunculus repens

Trifolium dubium

Vicia hirsuta

Dactylis glomerata

Hieracium sabaudum

Hypericum perforatum

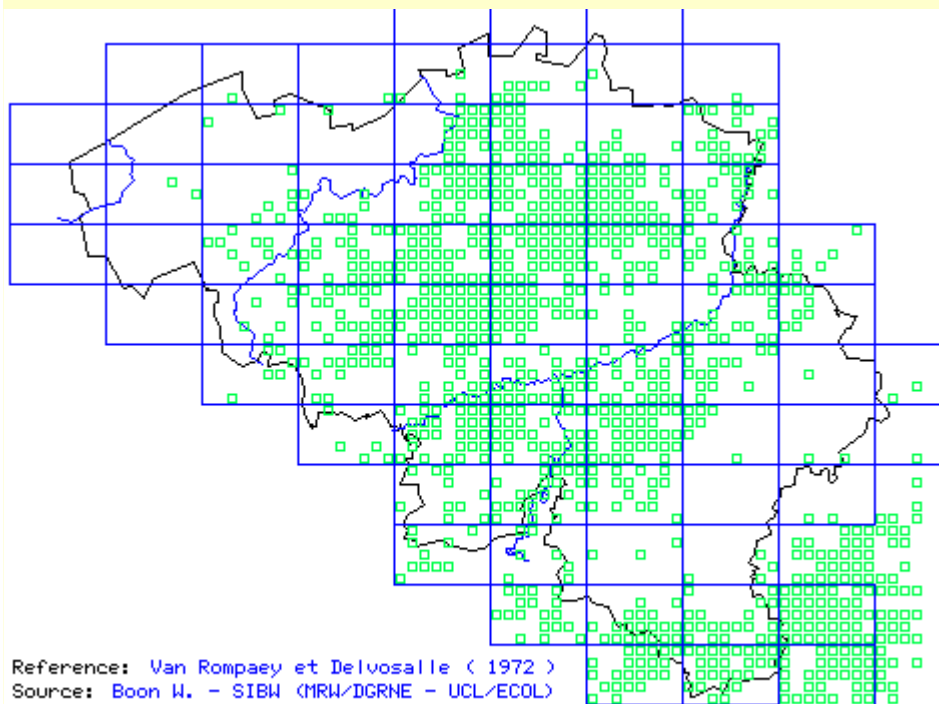
Vicia tetrasperma

Cirsium arvense



Ottignies-Louvain-la-Neuve

Carte de répartition des observations



Reference: Van Rompaey et Delvosalle (1972)

Source: Boon W. - SIBW (MRW/IGRNE - UCL/ECOL)

0967 - *Campanula rapunculus* L.



Campanula rapunculus
Campanule raiponce



***Hypericum perforatum*- Millepertuis commun**

Ottignies-Louvain-la-Neuve





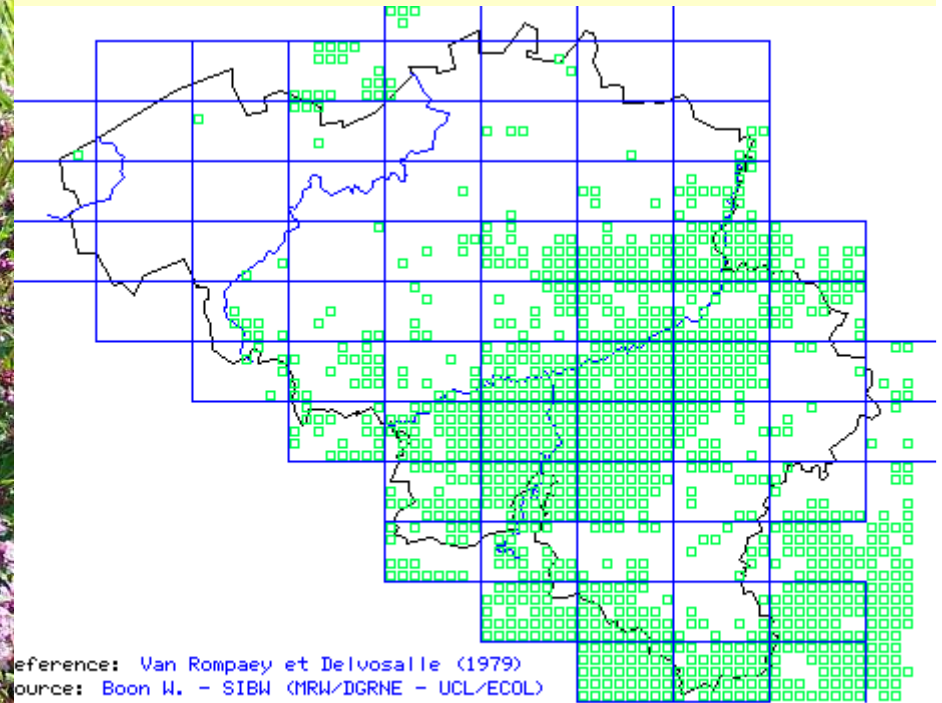
Taxon

Equisetum arvense
Trifolium campestre
Festuca rubra
Origanum vulgare
Vicia hirsuta
Arrhenatherum elatius
Vicia tetrasperma
Daucus carota
Hypericum perforatum

Agrostis capillaris
Plantago lanceolata
Crepis capillaris
Rubus sp.
Vicia sativa
Trifolium dubium
Trifolium pratense
Hypochaeris radicata
Senecio jacobaea
Artemisia vulgaris
Dactylis glomerata
Lotus corniculatus
Malva sylvestris



Carte de répartition de la plante en Belgique

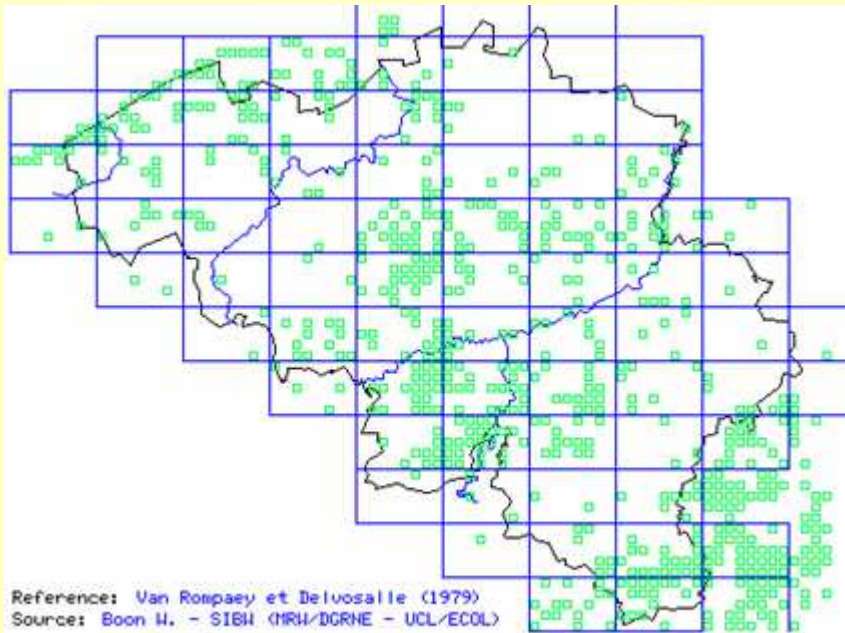


Reference: Van Rompaey et Delvosalle (1979)
Source: Boon W. - SIBW (MRW/IGRNE - UCL/ECOL)

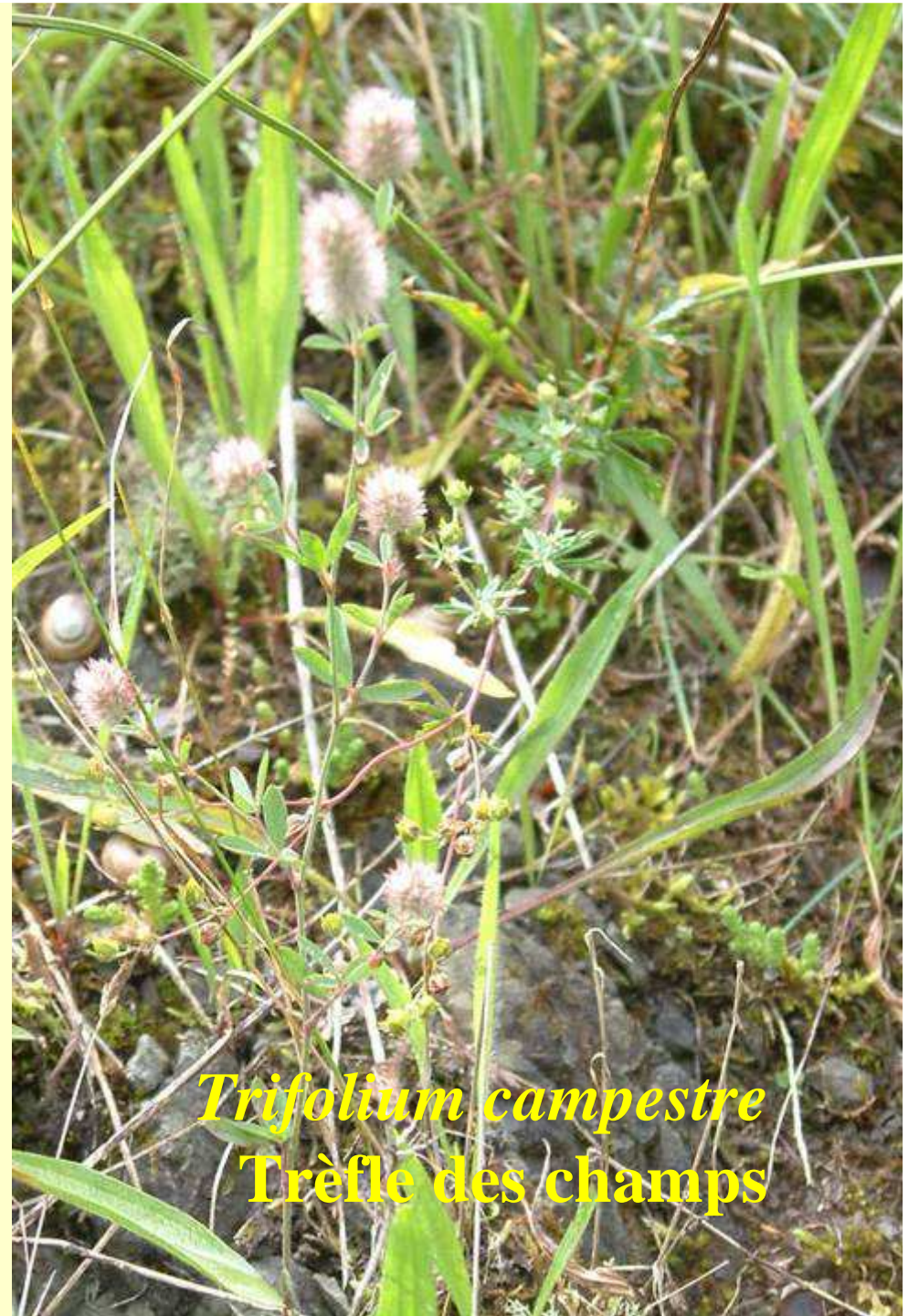
1775 - Origanum vulgare L.

Origanum vulgare
Origan

Carte de répartition des observations

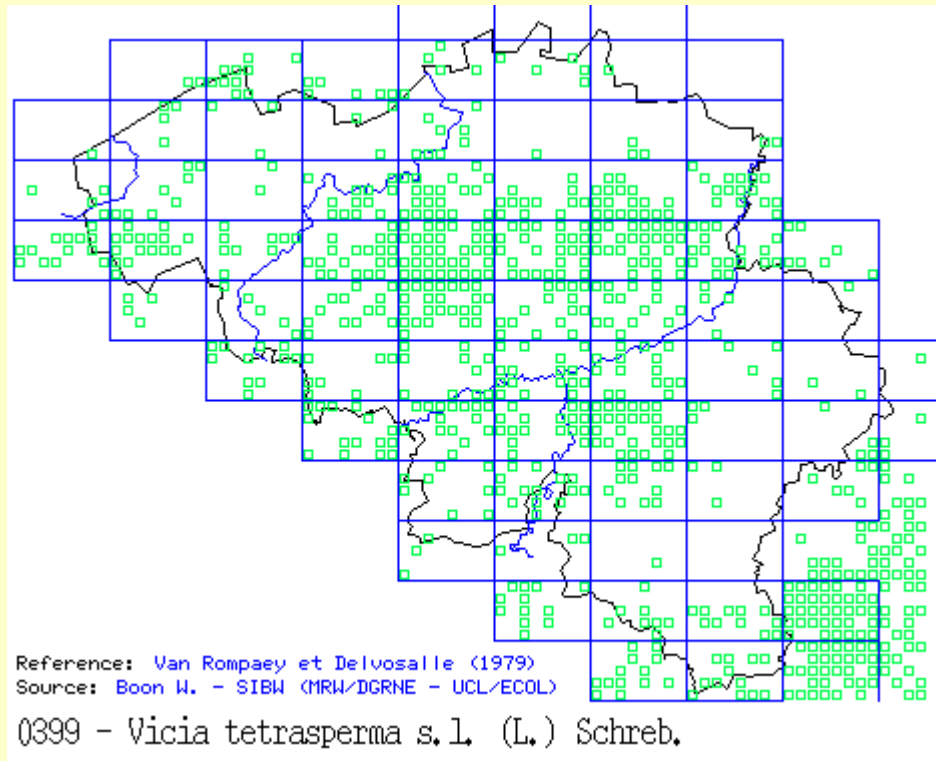


0370 - *Trifolium campestre* Schreb.



Trifolium campestre
Trèfle des champs

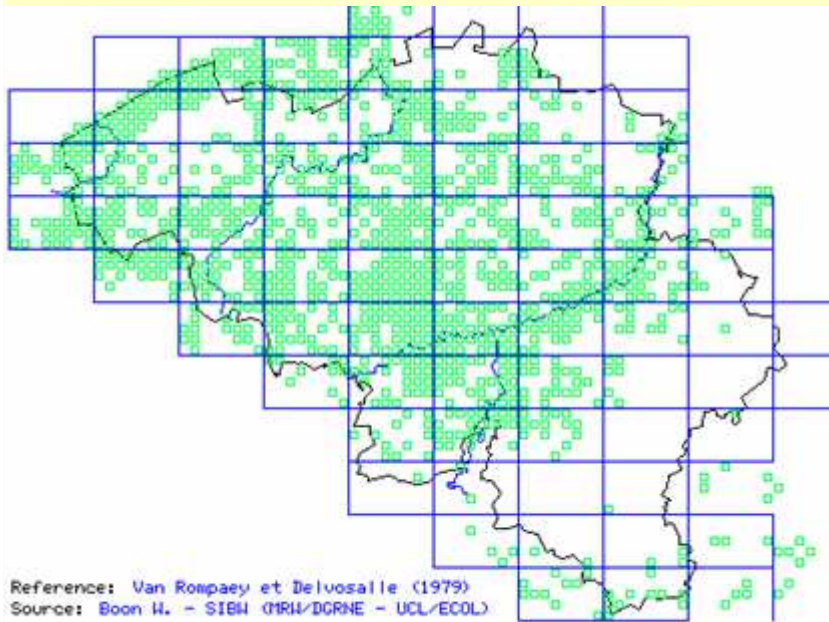
Carte de répartition de la plante en Belgique



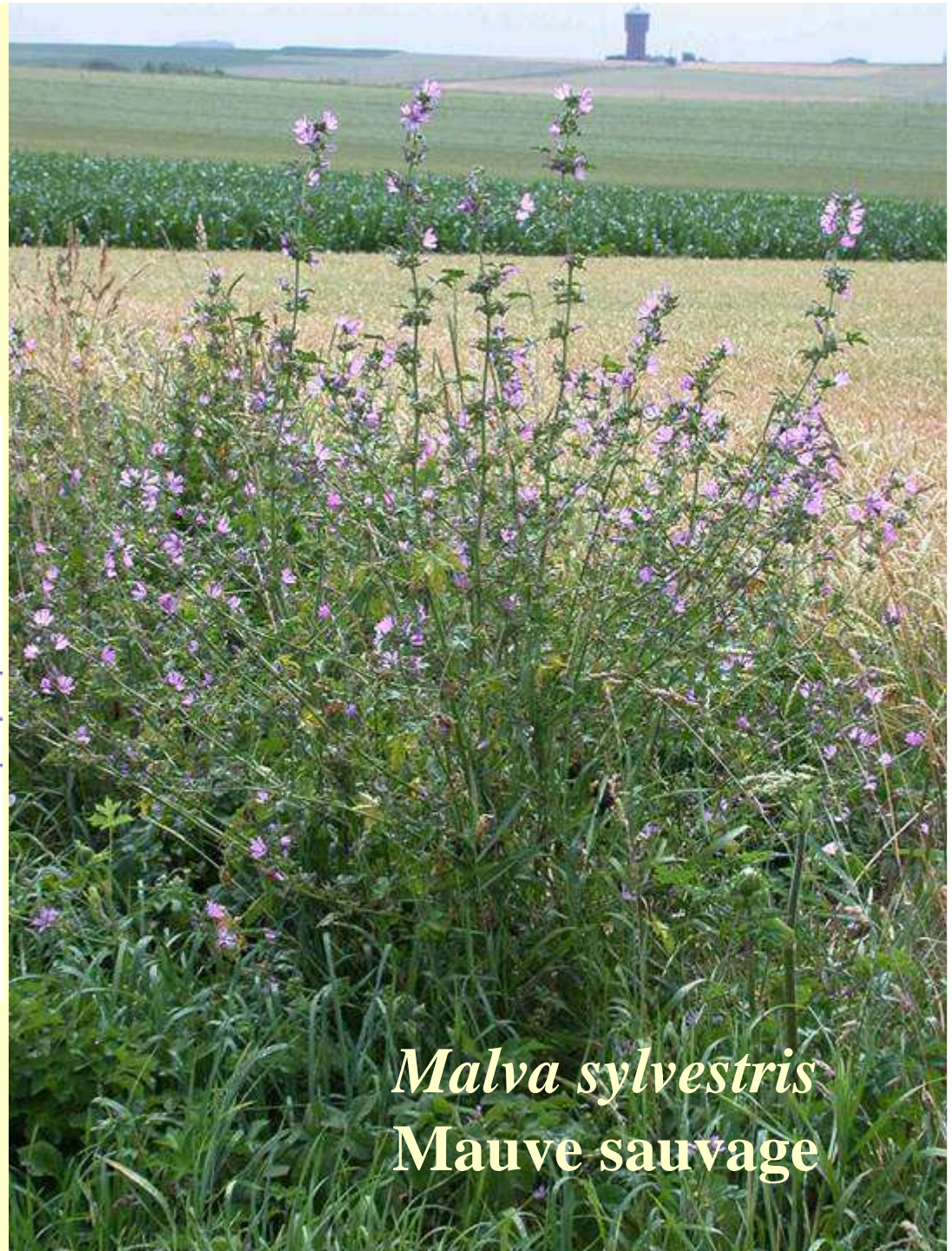


Trifolium pratense
Trèfle des prés

Carte de répartition de la plante en Belgique



0541 - *Malva sylvestris* L.



Malva sylvestris
Mauve sauvage

Ottignies-Louvain-la-Neuve



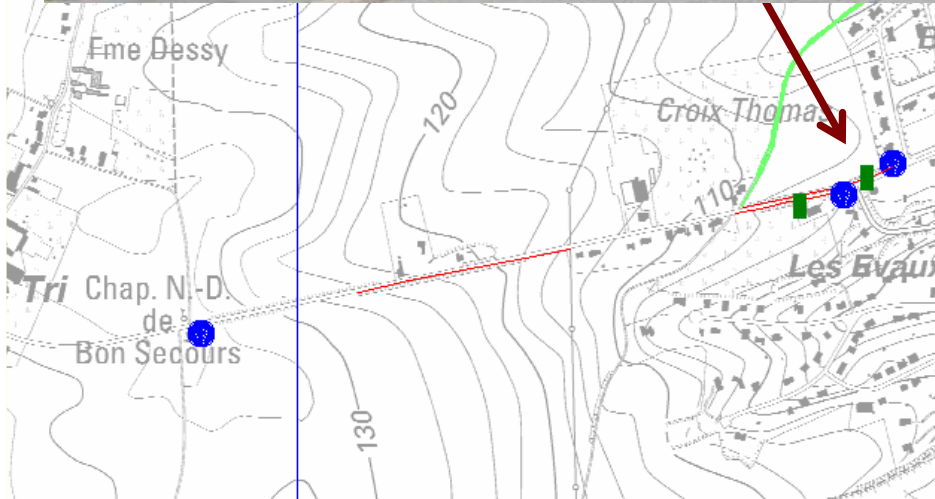
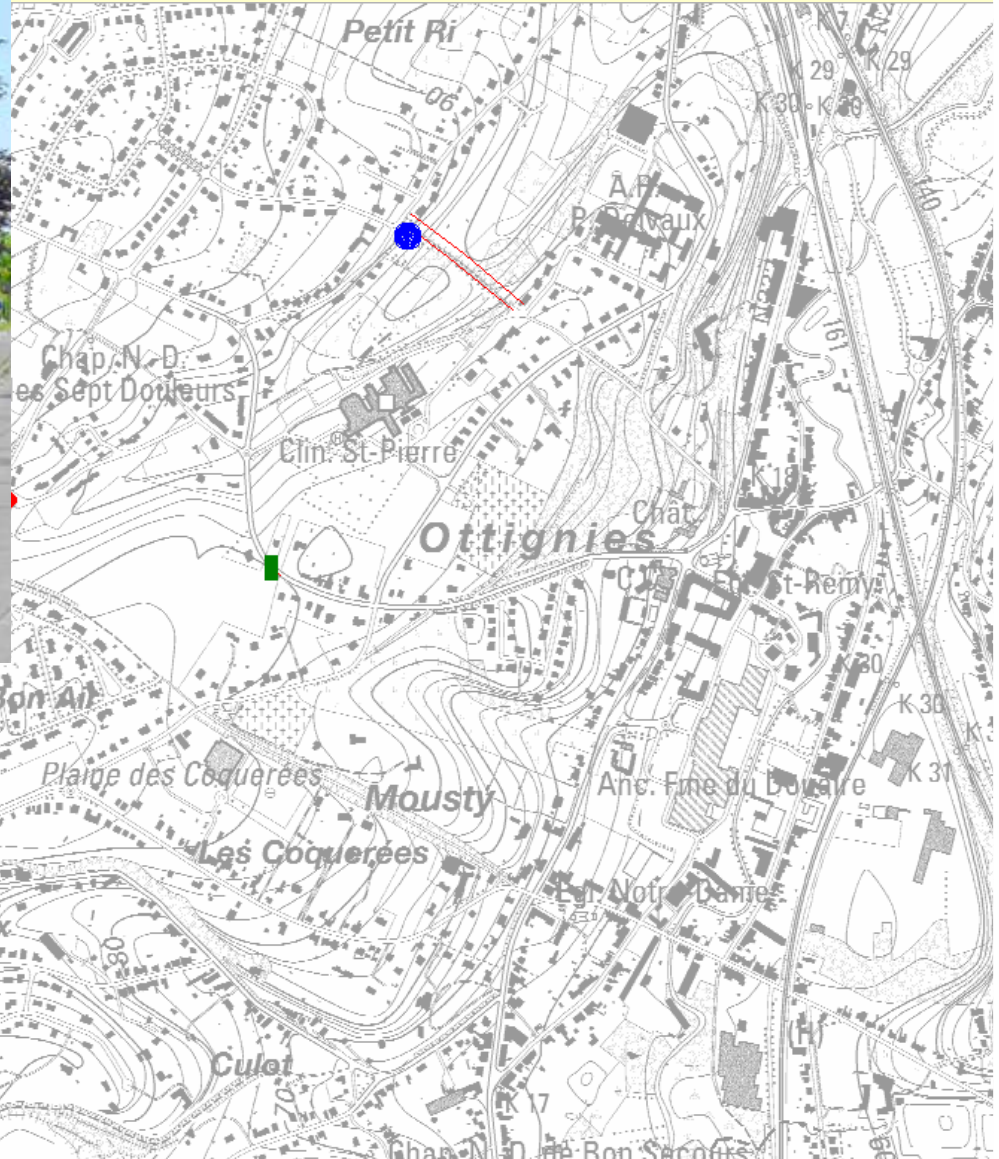
Ottignies-Louvain-la-Neuve

| Taxon |
|------------------------------|
| <i>Campanula rapunculus</i> |
| <i>Dactylis glomerata</i> |
| <i>Arrhenatherum elatius</i> |
| <i>Vicia hirsuta</i> |
| <i>Senecio jacobaea</i> |
| <i>Plantago lanceolata</i> |
| <i>Festuca rubra</i> |
| <i>Daucus carota</i> |
| <i>Prunus</i> sp. |
| <i>Vicia tetrasperma</i> |
| <i>Vicia sativa</i> |
| <i>Poa pratensis</i> |
| <i>Crepis capillaris</i> |
| <i>Bromus hordeaceus</i> |
| <i>Cerastium fontanum</i> |

Ottignies-Louvain-la-Neuve



Ottignies-Louvain-la-Neuve



Ottignies-Louvain-la-Neuve

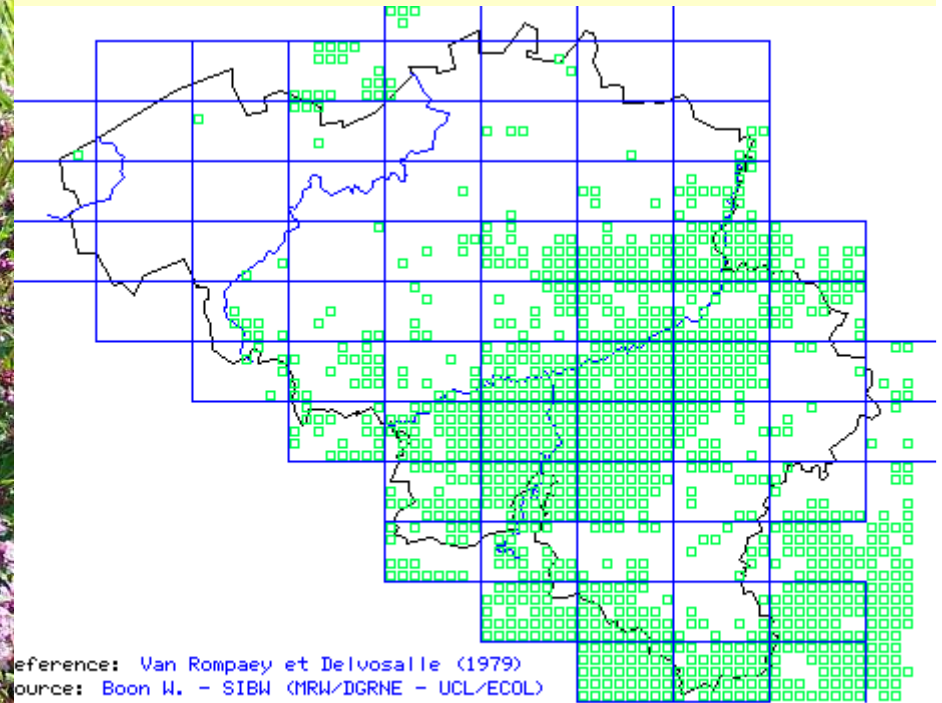
Taxon

Arrhenatherum elatius
Origanum vulgare
Vicia hirsuta
Knautia arvensis
Heracleum sphondylium
Vicia tetrasperma
Vicia sativa
Convolvulus arvensis
Galium aparine
Plantago lanceolata
Hieracium umbellatum
Centaurea jacea
Leucanthemum vulgare
Lactuca serriola
Lapsana communis





Carte de répartition de la plante en Belgique



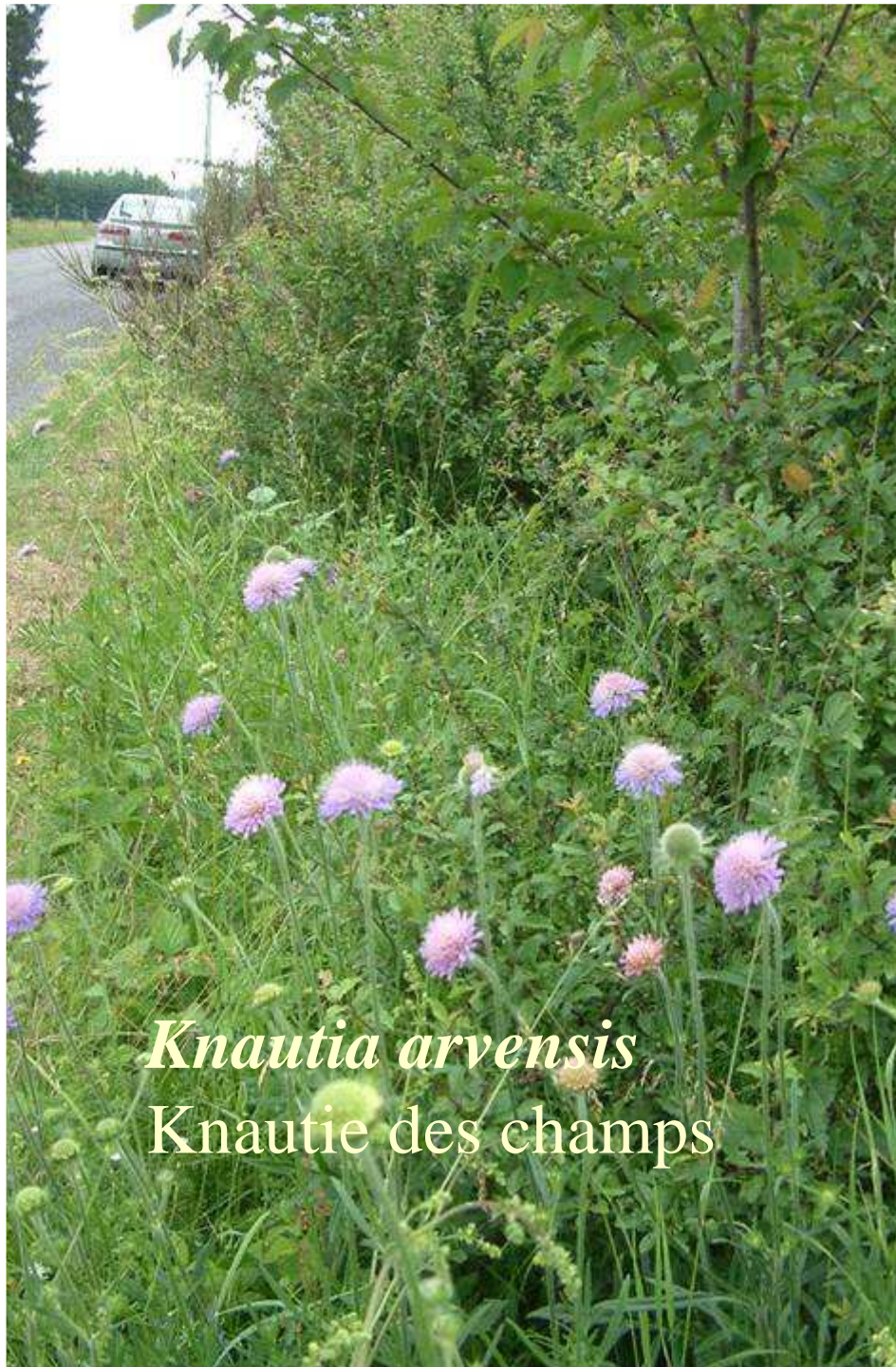
Reference: Van Rompaey et Delvosalle (1979)
Source: Boon W. - SIBW (MRW/IGRNE - UCL/ECOL)

1775 - *Origanum vulgare* L.

Origanum vulgare
Origan

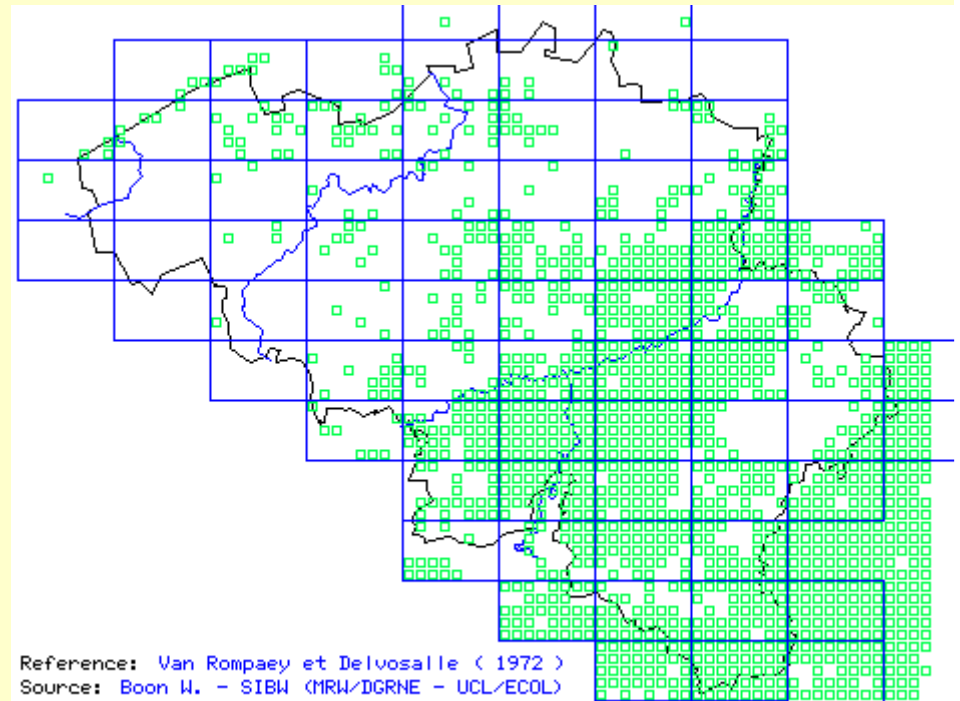
Centaurea thuillieri
Centaurée des prés





Knautia arvensis
Knautie des champs

Carte de répartition de la plante en Belgique



Reference: Van Rompaey et Delvosalle (1972)

Source: Boon W. - SIBW (MRW/IGRNE - UCL/ECOL)

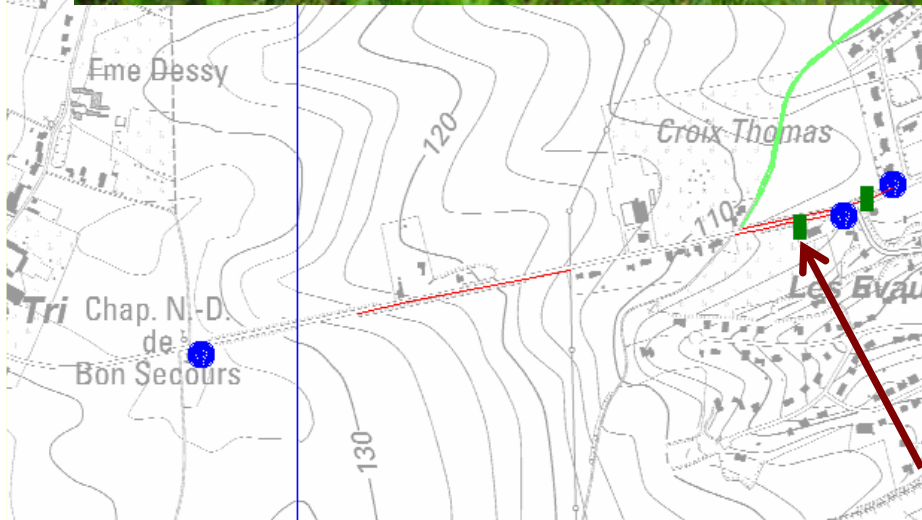
0956 - *Knautia arvensis* (L.) Coulter



Leucanthemum vulgare - Grande marguerite



Ottignies-Louvain-la-Neuve



Ottignies-Louvain-la-Neuve

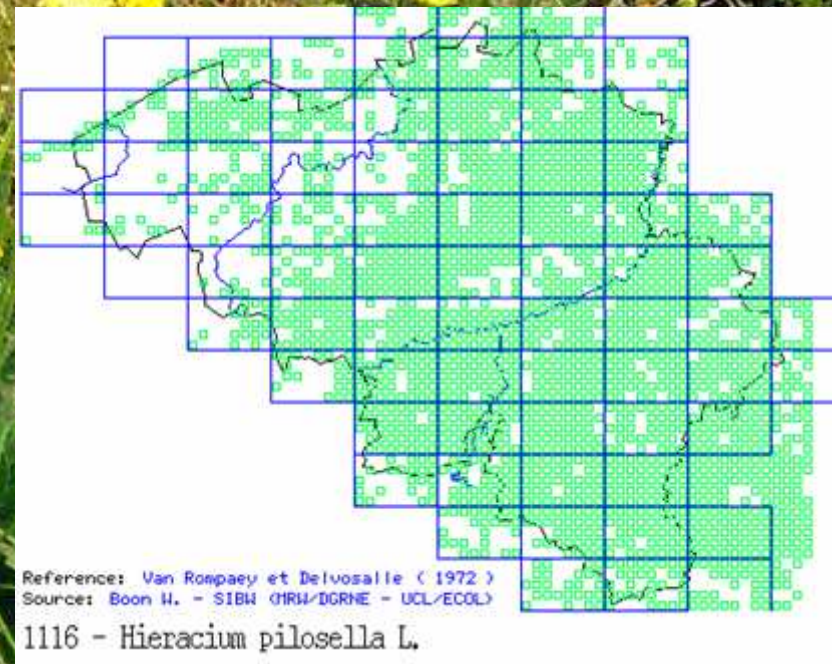
| Taxon |
|------------------------------|
| <i>Hieracium umbellatum</i> |
| <i>Agrostis capillaris</i> |
| <i>Plantago lanceolata</i> |
| <i>Festuca rubra</i> |
| <i>Arrhenatherum elatius</i> |
| <i>Veronica chamaedrys</i> |
| <i>Senecio jacobaea</i> |
| <i>Hieracium pilosella</i> |
| <i>Dactylis glomerata</i> |
| <i>Lapsana communis</i> |
| <i>Vicia tetrasperma</i> |
| <i>Hypochaeris radicata</i> |



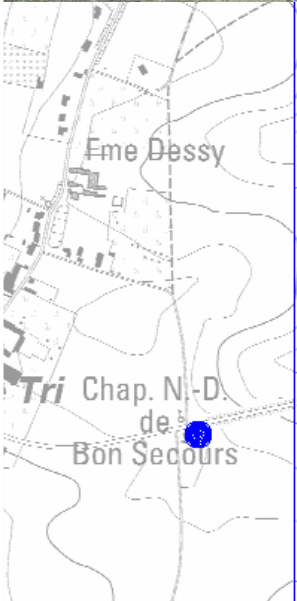
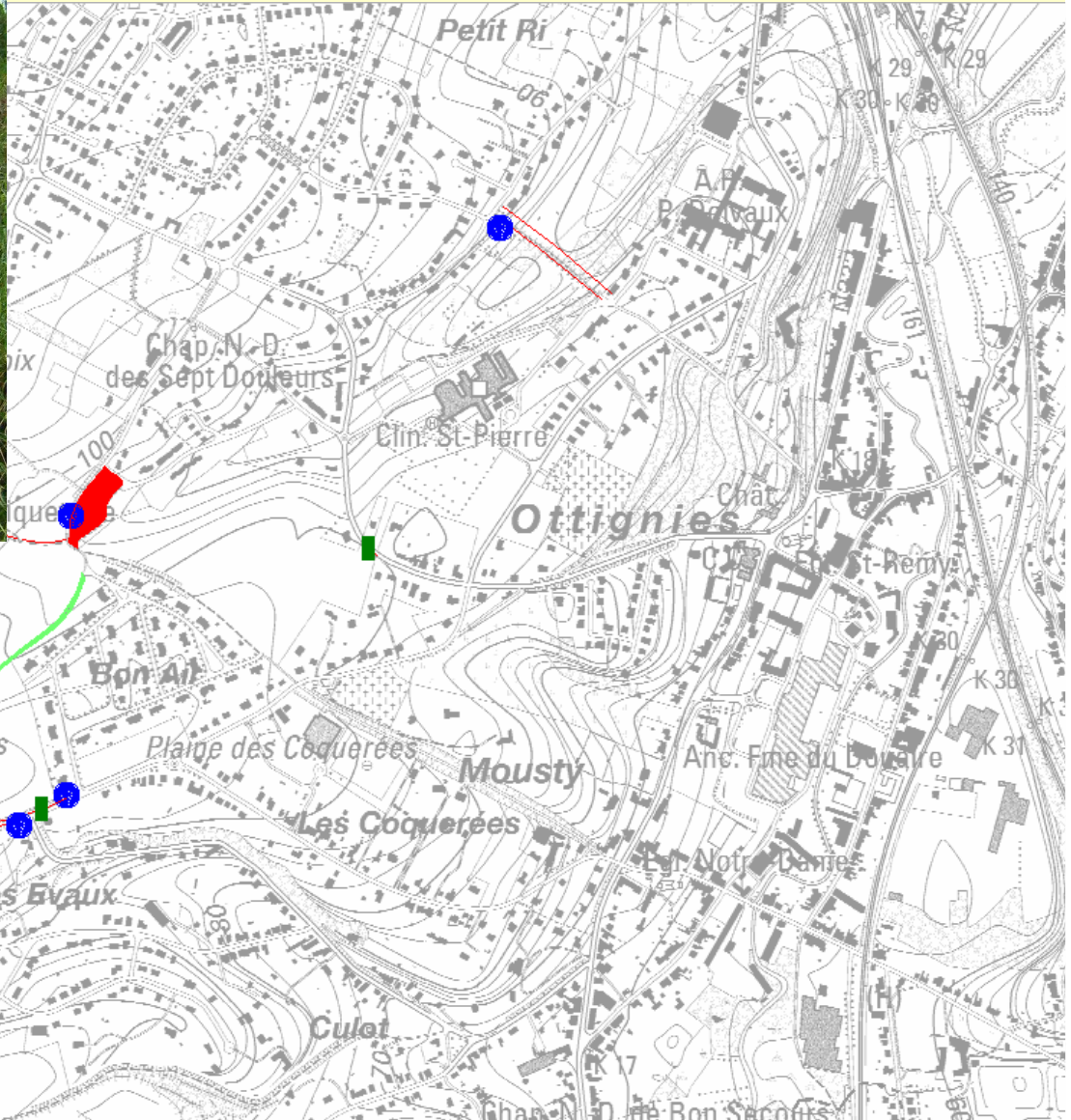
Hieracium umbellatum
Epervière en ombelle

Carte de répartition
de la plante en Belgique

Hieracium pilosella
Epervière piloselle



Ottignies-Louvain-la-Neuve





Ottignies-Louvain-la-Neuve

Taxon

Arrhenatherum elatius

Pimpinella major

Plantago lanceolata

Urtica dioica

Trifolium pratense

Cerastium fontanum

Taraxacum sp.

Festuca rubra

Vicia hirsuta

Bromus hordeaceus

Equisetum arvense

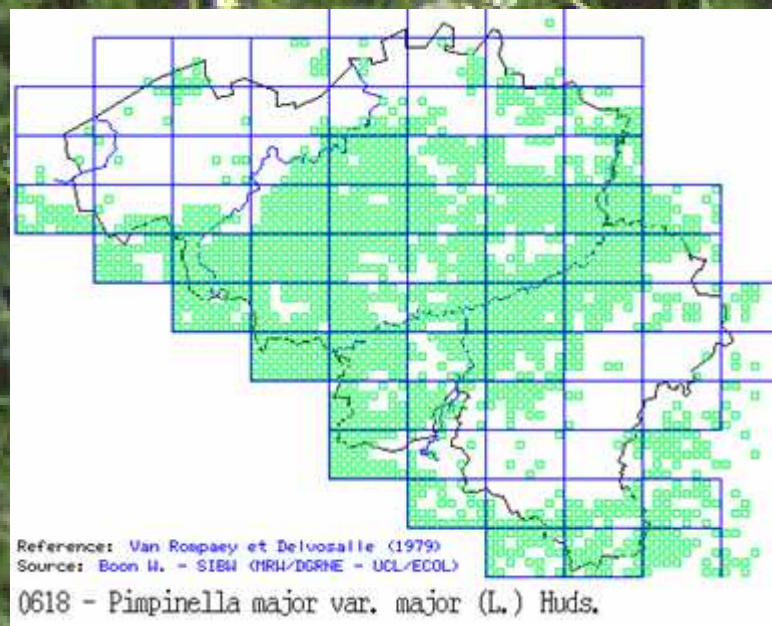
Senecio jacobaea

Daucus carota

Lapsana communis

Ranunculus acris

Carte de répartition de la plante en Belgique



Pimpinella major
Grand boucage

Ottignies-Louvain-la-Neuve





Ottignies-Louvain-la-Neuve

Taxon

Arrhenatherum elatius

Hypochaeris radicata

Dactylis glomerata

Campanula rapunculus

Vicia sativa

Hypericum perforatum

Trifolium arvense

Lotus corniculatus

Bromus sterilis

Daucus carota

Senecio jacobaea

Plantago lanceolata

Agrostis capillaris

Bromus hordeaceus

Poa pratensis

Aphanes arvensis

Lactuca serriola



Ottignies-Louvain-la-Neuve



A close-up photograph of a field of yellow Trifolium arvense flowers. The flowers are small, bright yellow, and arranged in dense, rounded clusters. The leaves are green and trifoliate, with three rounded leaflets per stem. The background is a dense field of similar plants, with some taller grasses visible.

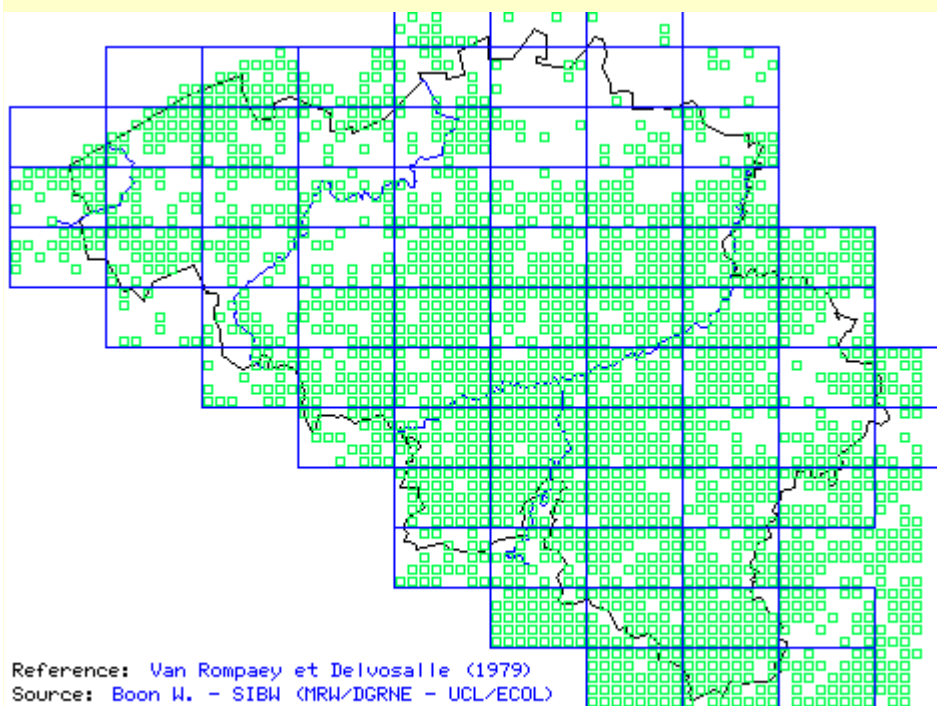
Ottignies-Louvain-la-Neuve

Trifolium arvense
Pied-de-lièvre

Ottignies-Louvain-la-Neuve



Carte de répartition des observations



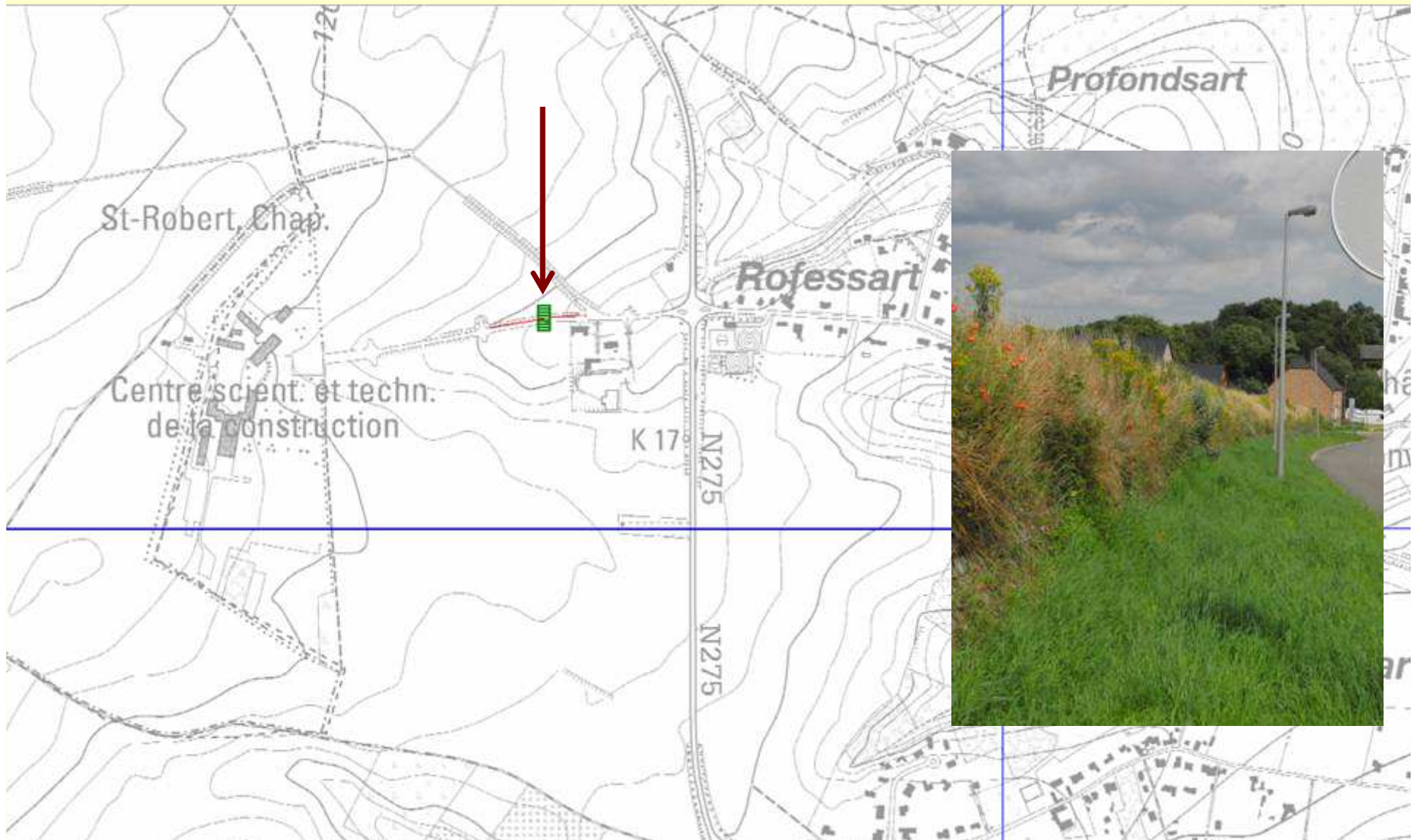
Reference: Van Rompaey et Delvosalle (1979)
Source: Boon W. - SIBW (MRW/IGRNE - UCL/ECOL)

0383 - *Lotus corniculatus* L.

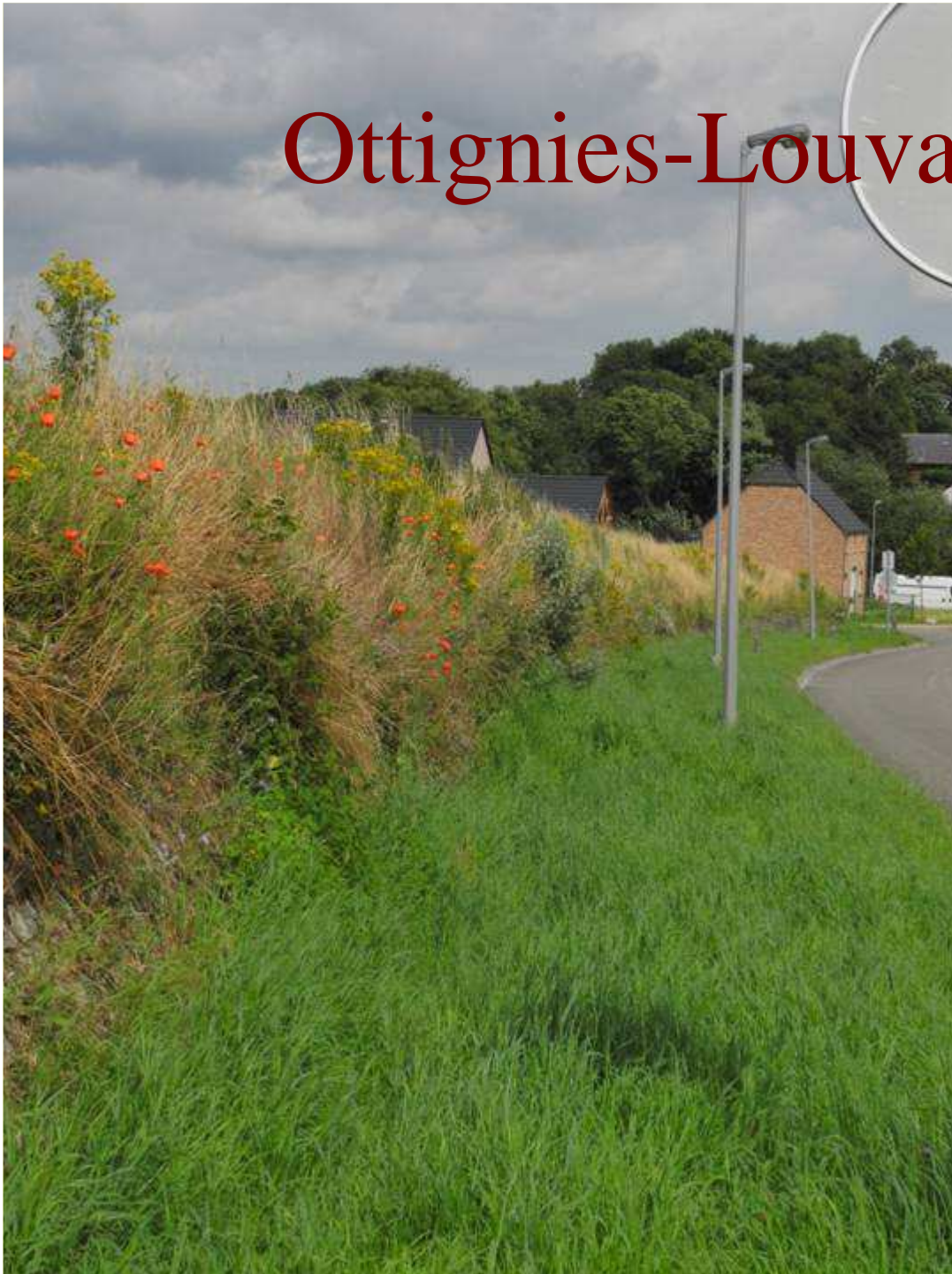


Lotus corniculatus
Lotier corniculé

Ottignies-Louvain-la-Neuve



Ottignies-Louvain-la-Neuve



Taxon

Arrhenatherum elatius
Achillea millefolium
Dactylis glomerata
Linaria vulgaris
Vicia sativa
Senecio jacobaea
Plantago lanceolata
Rosa canina s.l.
Leucanthemum vulgare
Daucus carota
Campanula rapunculus
Papaver rhoeas
Festuca rubra
Sonchus asper
Myosotis arvensis
Hypericum perforatum
Aphanes arvensis
Ranunculus repens
Lapsana communis



SAUF
DESSERTTE LOCALE

CHARROI AGRICOLE
A 500 m

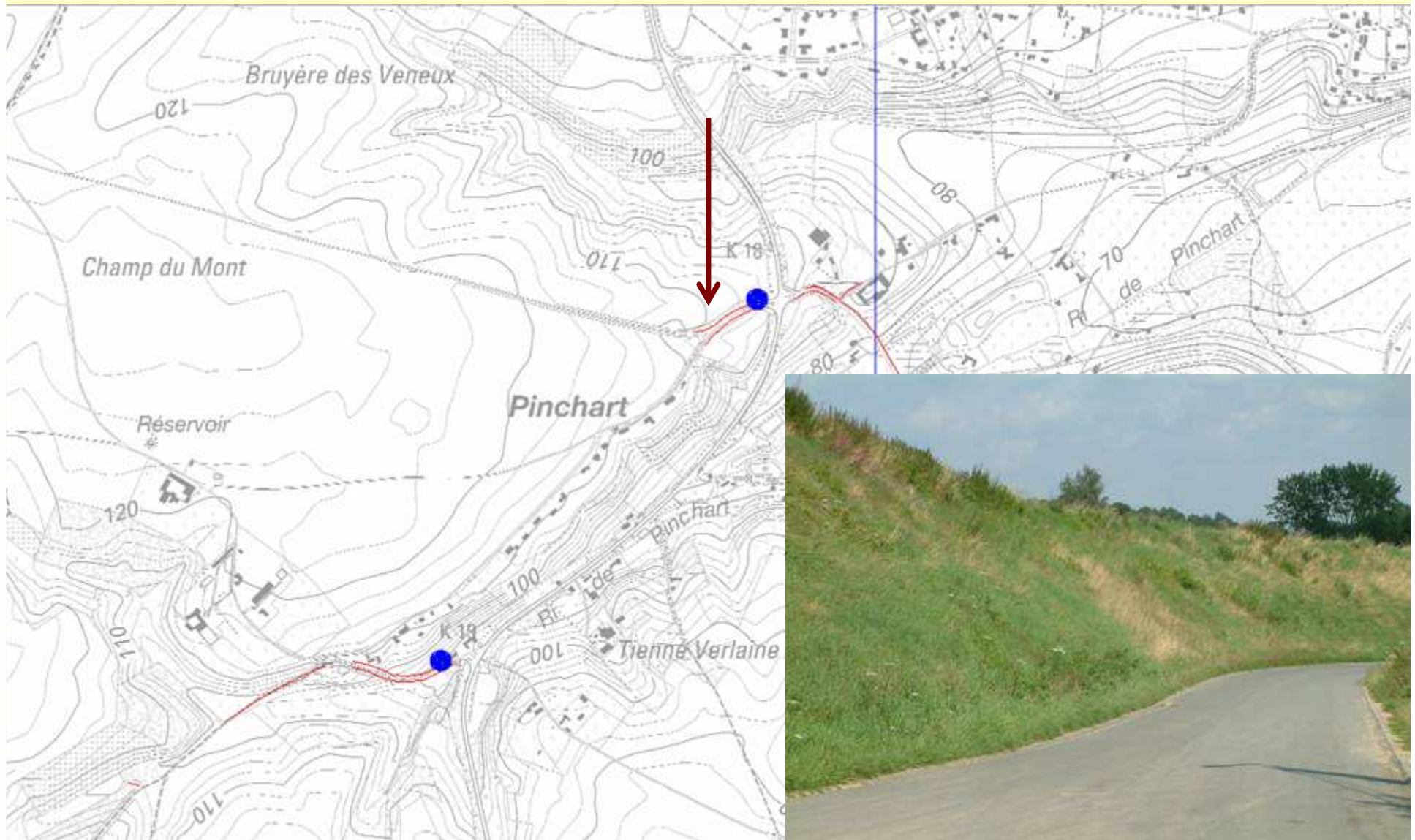
Ottignies-Louvain-la-Neuve



Ottignies-Louvain-la-Neuve



Ottignies-Louvain-la-Neuve





Ottignies-Louvain-la-Neuve

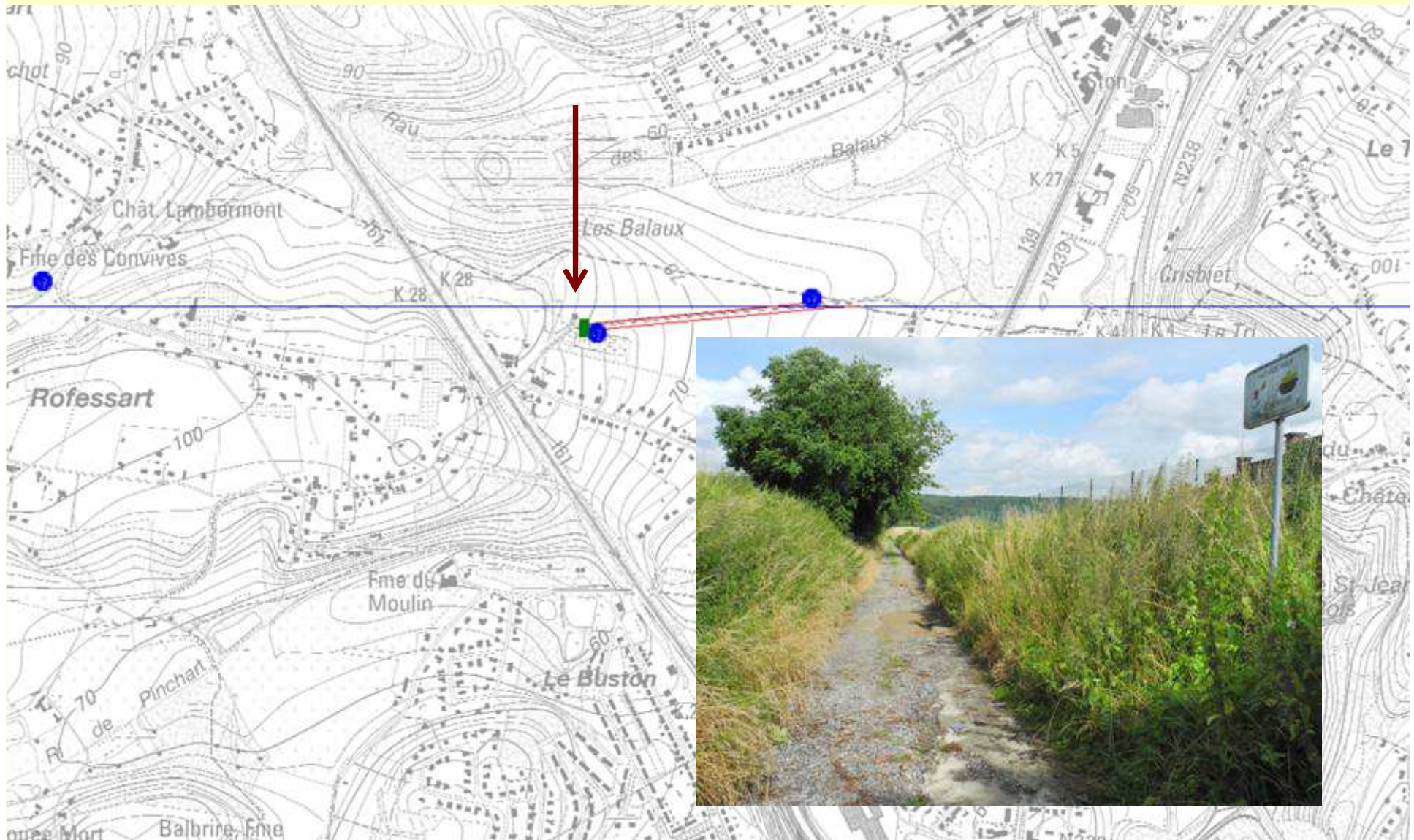


Ottignies-Louvain-la-Neuve



Ottignies-Louvain-la-Neuve

Ottignies-Louvain-la-Neuve



Ottignies-Louvain-la-Neuve

Taxon

Urtica dioica

Arrhenatherum elatius

Heracleum sphondylium

Calystegia sepium

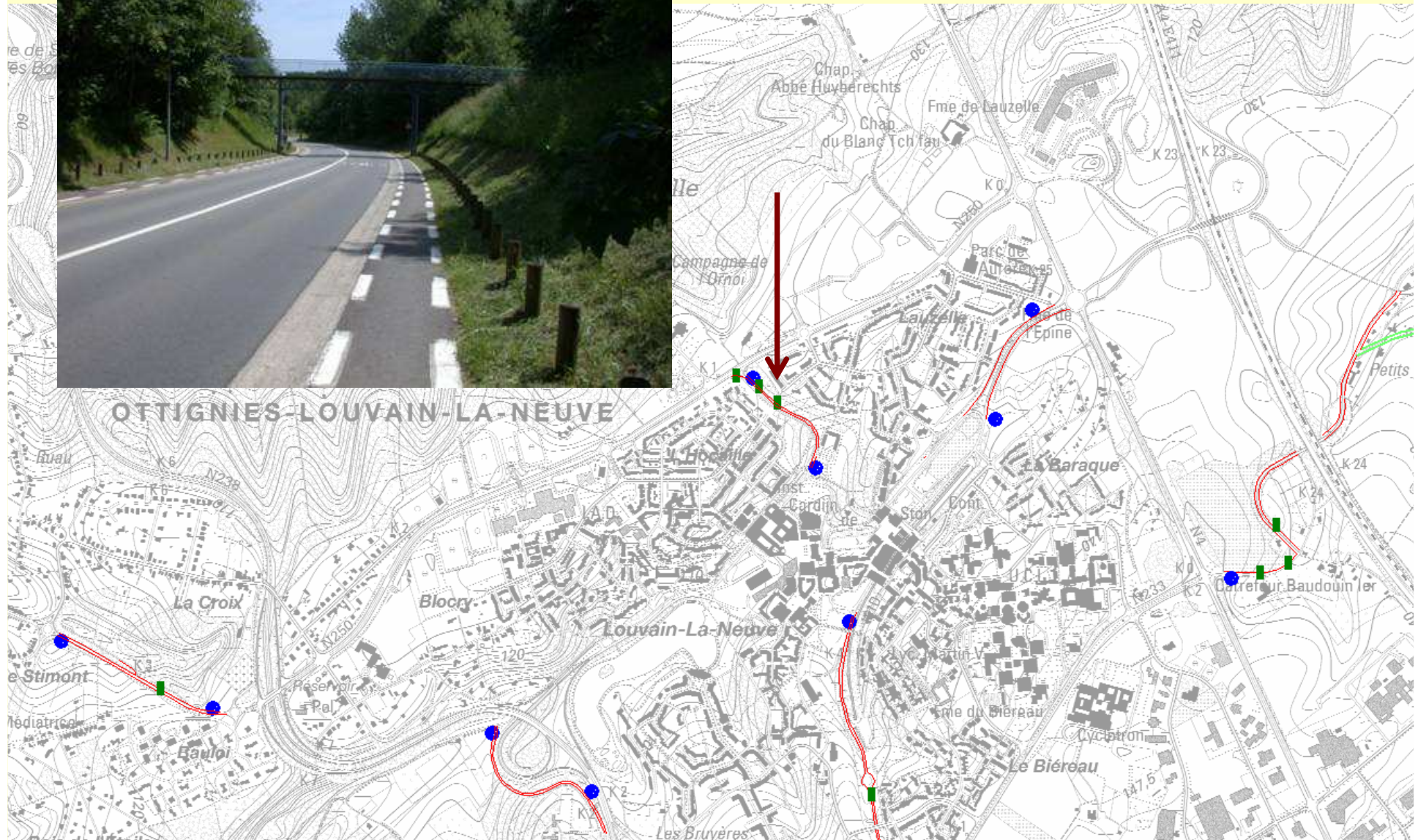
Galium aparine

Equisetum arvense

Lapsana communis



Ottignies-Louvain-la-Neuve





Ottignies-Louvain-la-Neuve

Taxon

Malva neglecta
Plantago lanceolata
Campanula rapunculus
Hypericum perforatum
Daucus carota
Senecio jacobaea
Trifolium pratense
Trifolium repens
Cerastium fontanum
Oenothera parviflora
Malva moschata
Lapsana communis
Hypochaeris radicata
Festuca rubra
Festuca pratensis
Crepis capillaris
Rubus sp.
Calystegia sepium
Equisetum arvense
Solidago canadensis

Taxon

Solidago canadensis
Trifolium dubium
Prunella vulgaris
Ranunculus repens
Veronica agrestis
Vicia sativa
Taraxacum sp.
Sonchus asper
Geranium dissectum
Fraxinus excelsior
Epilobium tetragonum
Verbascum thapsus
Anthoxanthum odoratum
Arrhenatherum elatius
Geum urbanum
Bellis perennis
Inula conyzae
Prunus avium
Tragopogon pratensis

Ottignies-Louvain-la-Neuve

Taxon

Equisetum arvense
Holcus lanatus
Plantago lanceolata
Rubus sp.
Senecio jacobaea
Valerianella sp.
Epilobium tetragonum
Malva moschata
Crepis capillaris
Lotus corniculatus
Festuca rubra
Vicia hirsuta
Vicia tetrasperma
Trifolium pratense
Vicia sativa
Artemisia vulgaris
Geranium dissectum
Lolium perenne
Taraxacum sp.



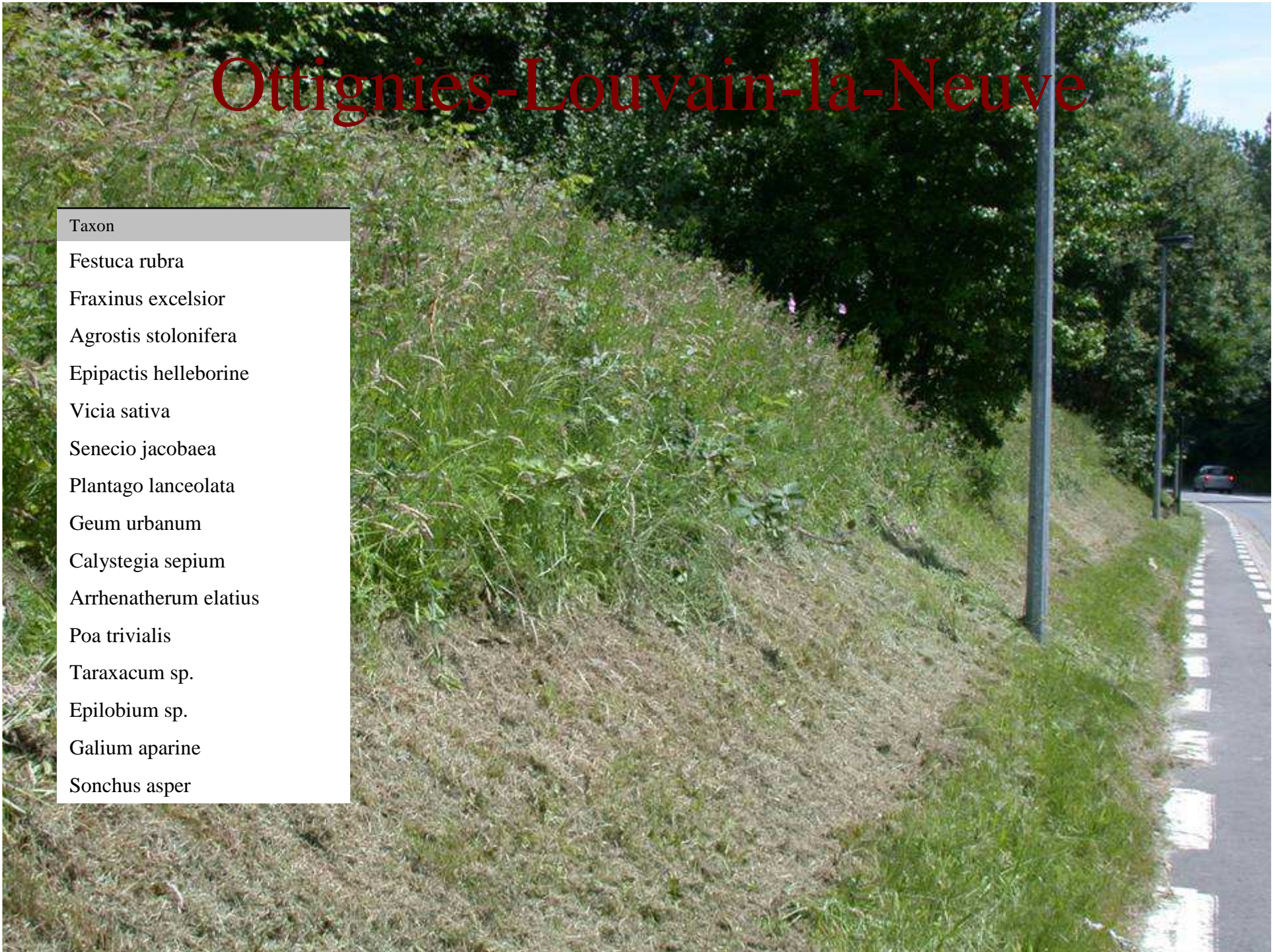
Ottignies-Louvain-la-Neuve



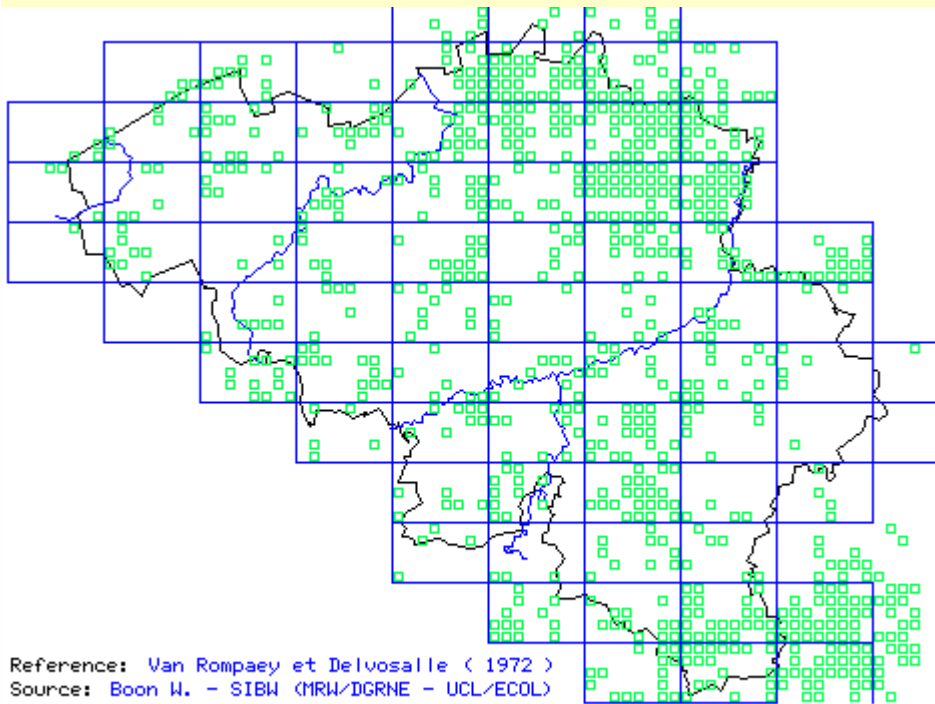
Ottignies-Louvain-la-Neuve

Taxon

Festuca rubra
Fraxinus excelsior
Agrostis stolonifera
Epipactis helleborine
Vicia sativa
Senecio jacobaea
Plantago lanceolata
Geum urbanum
Calystegia sepium
Arrhenatherum elatius
Poa trivialis
Taraxacum sp.
Epilobium sp.
Galium aparine
Sonchus asper

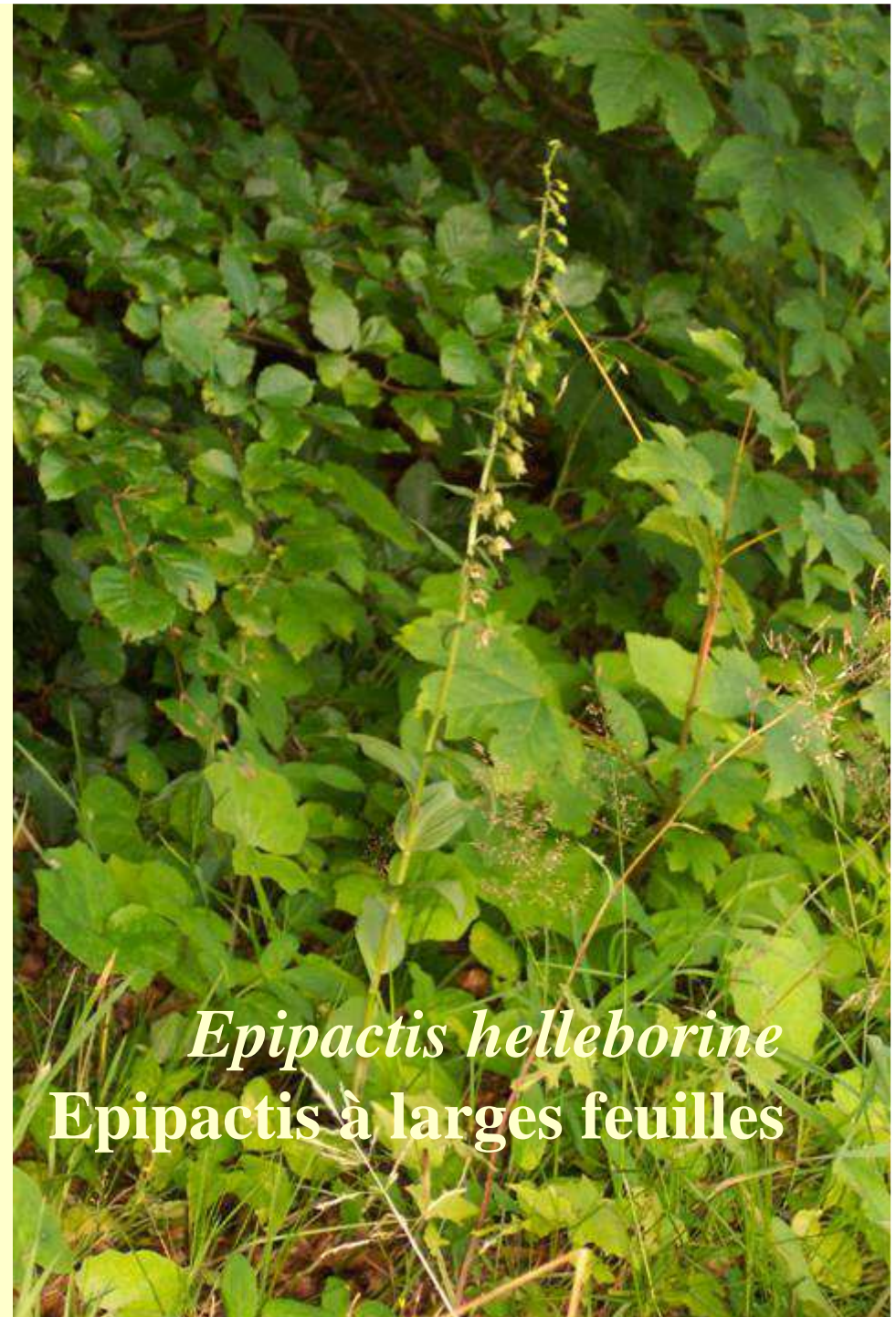


Carte de répartition des observations



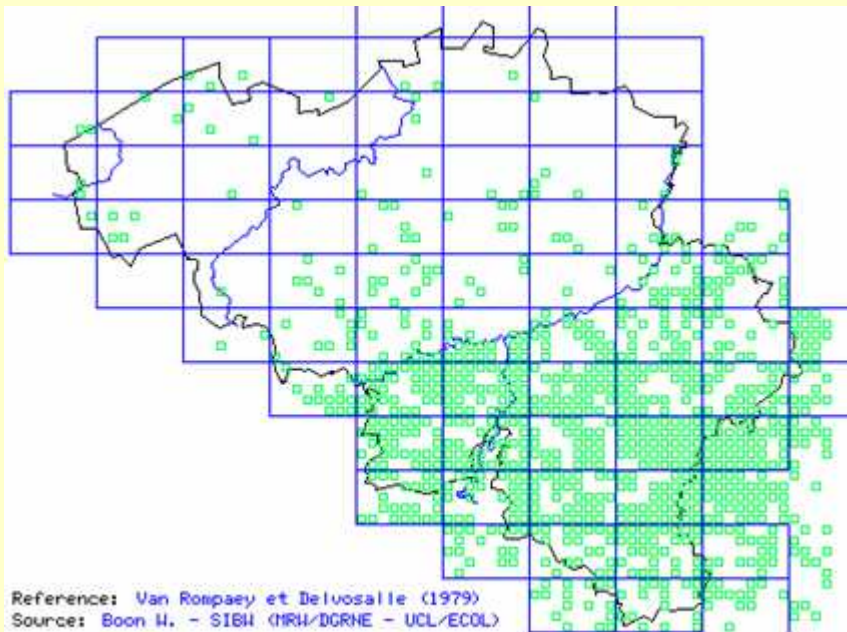
Reference: Van Rompaey et Delvosalle (1972)
Source: Boon W. - SIBW (MRW/IGRNE - UCL/ECOL)

1237 - *Epipactis helleborine* (L.) Crantz



Epipactis helleborine
Epipactis à larges feuilles

Carte de répartition de la plante en Belgique



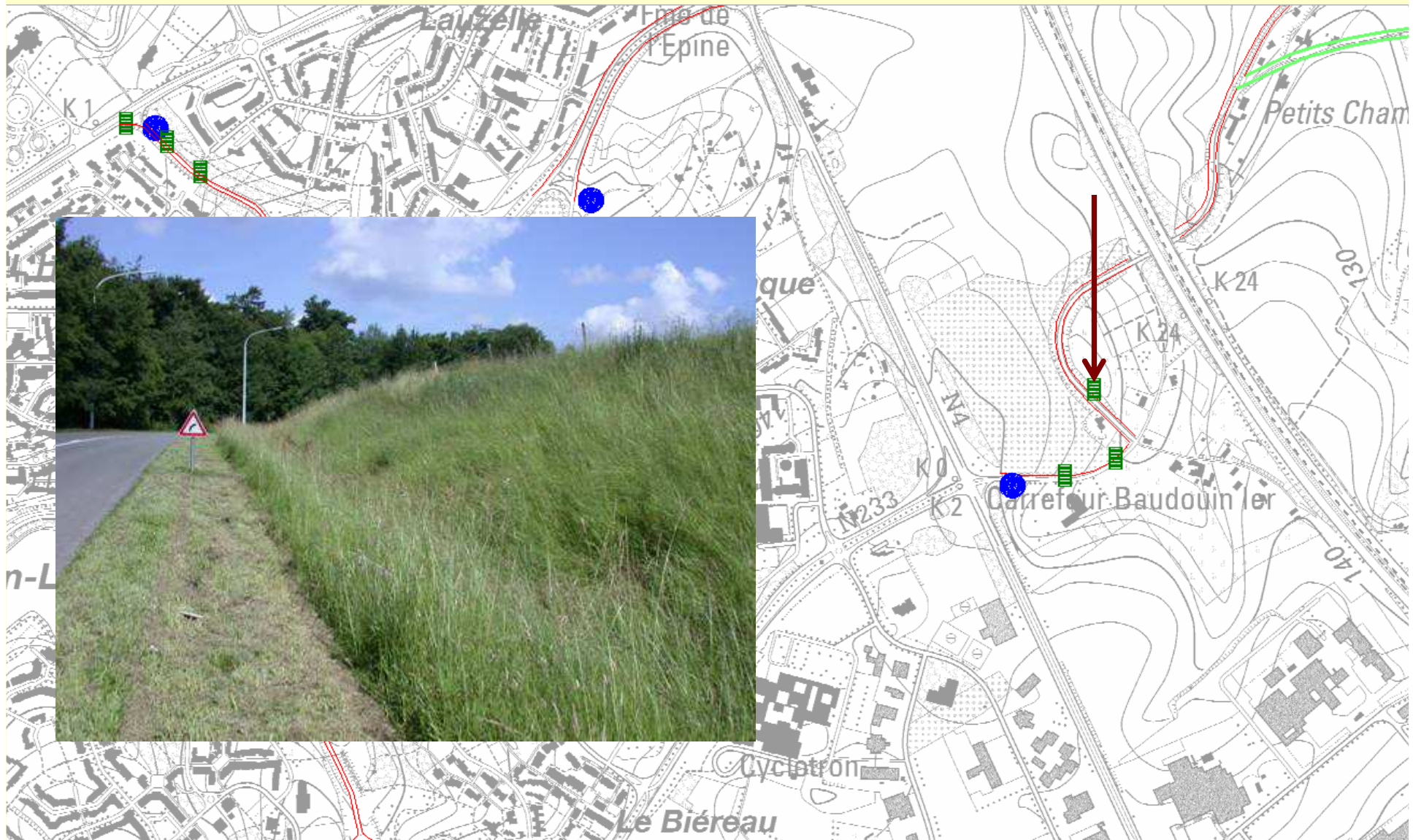
Reference: Van Rompaey et Delvosalle (1979)
Source: Boon W. - SIBH (MIRH/DCRNE - UCL/ECOL)

0540 - *Malva moschata* L.



Malva moschata
Mauve musquée

Ottignies-Louvain-la-Neuve



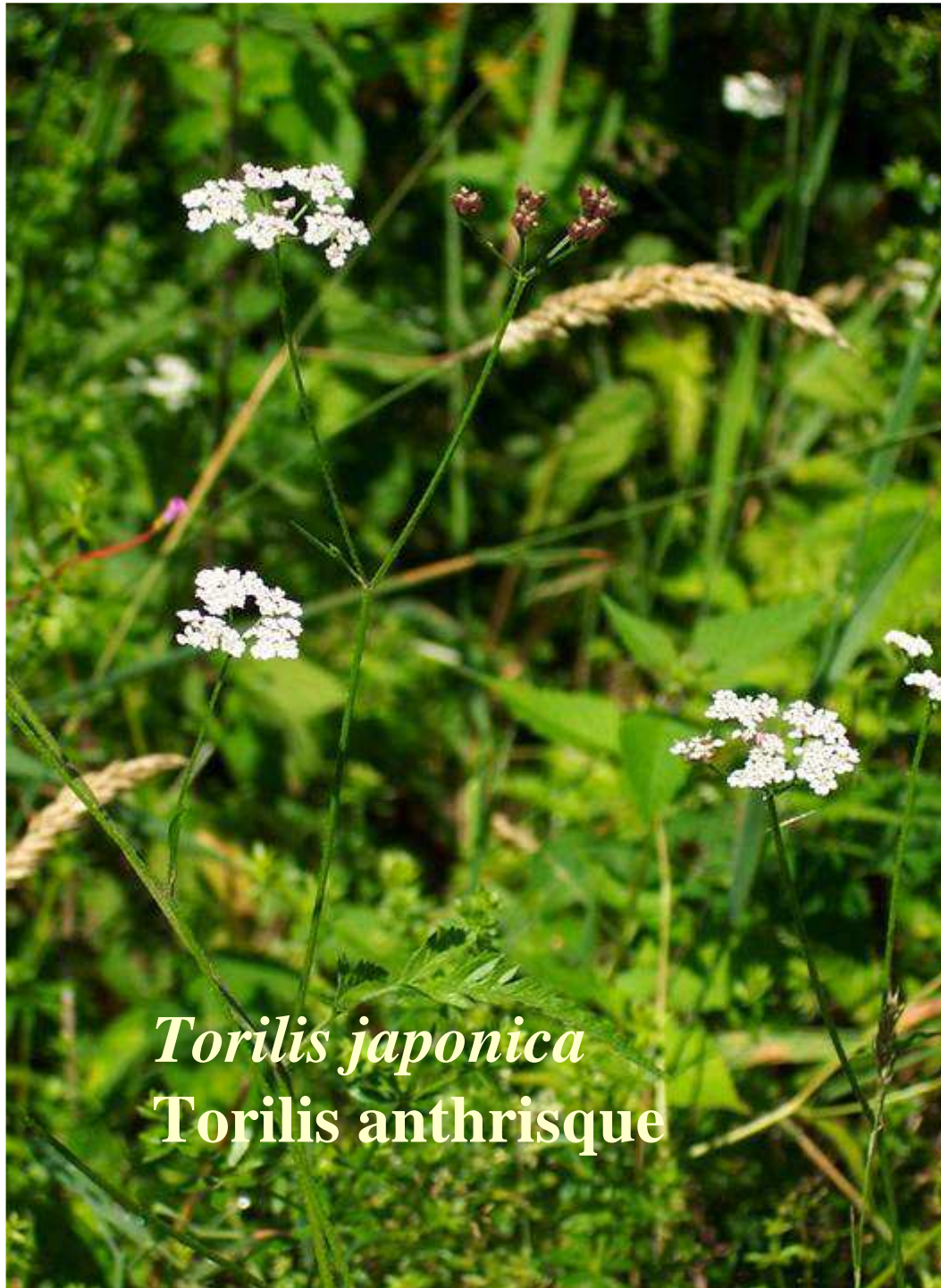
Ottignies-Louvain-la-Neuve

Taxon

Arrhenatherum elatius
Equisetum arvense
Plantago lanceolata
Senecio jacobaea
Dactylis glomerata
Festuca rubra
Heracleum sphondylium
Holcus lanatus
Urtica dioica
Vicia hirsuta
Veronica agrestis
Poa pratensis
Vicia sativa
Epilobium sp.
Medicago lupulina
Ranunculus repens
Torilis japonica
Achillea millefolium
Eupatorium cannabinum
Galeopsis tetrahit
Galium aparine
Geranium dissectum
Rumex acetosa

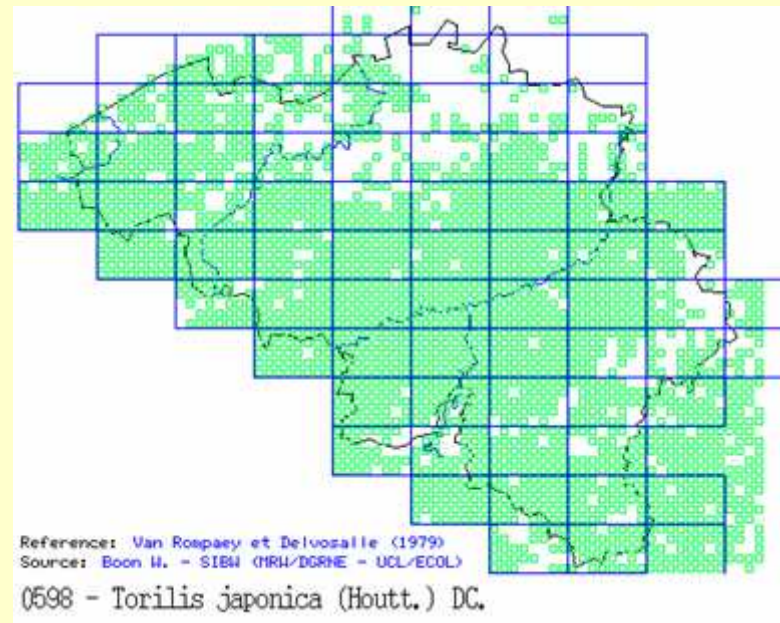


Rumex acetosa - Oseille sauvage



Torilis japonica
Torilis anthriscus

Carte de répartition de la plante en Belgique



Ottignies-Louvain-la-Neuve



Ottignies-Louvain-la-Neuve

Taxon

Agrostis capillaris
Arrhenatherum elatius
Daucus carota
Plantago lanceolata
Rubus sp.
Achillea millefolium
Trifolium dubium
Rumex acetosella
Festuca rubra
Poa compressa
Senecio jacobaea
Hypericum perforatum
Poa pratensis
Vicia sativa
Dactylis glomerata
Vicia hirsuta
Geranium columbinum
Aphanes arvensis
Galium aparine

Ottignies-Louvain-la-Neuve



Ottignies-Louvain-la-Neuve

Taxon

Epilobium hirsutum

Galium aparine

Urtica dioica

Rubus sp.

Convolvulus arvensis

Galeopsis tetrahit

Eupatorium cannabinum

Artemisia vulgaris

Aegopodium podagraria

Cirsium arvense

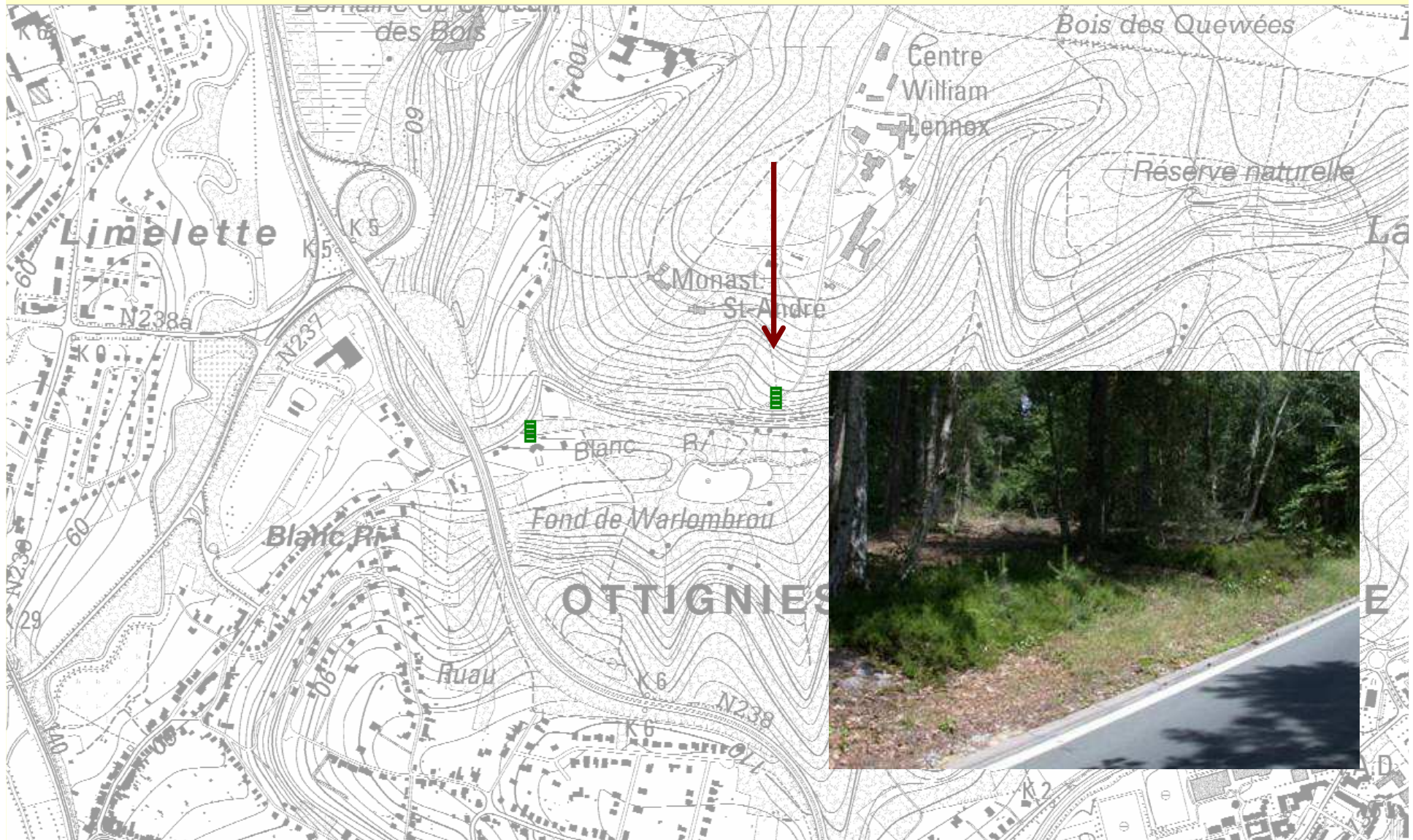
Bromus sterilis

Arrhenatherum elatius

Vicia sativa

Elymus repens

Ottignies-Louvain-la-Neuve



A photograph of a road shoulder with a list of plant taxa overlaid. The road is asphalt with a white line, and the shoulder is covered in grass and small plants. In the background, there is a dense forest of trees. The list of taxa is as follows:

Taxon

Calluna vulgaris

Rumex acetosella

Pinus sylvestris

Betula pendula

Quercus robur



Rumex acetosella
Petite oseille

Ottignies-Louvain-la-Neuve



Ottignies-Louvain-la-Neuve

Taxon

Lathyrus pratensis

Holcus lanatus

Urtica dioica

Arrhenatherum elatius

Calystegia sepium

Poa trivialis

Potentilla sterilis

Trifolium pratense

Vicia sepium

Equisetum arvense

Hypericum perforatum

Plantago lanceolata

Ranunculus repens

Rubus sp.

Campanula rapunculus

Lapsana communis

Bromus hordeaceus

Hypochaeris radicata







Ottignies-Louvain-la-Neuve

